

**ONCAMPUS
UCLAN**

Achieve more

Guaranteed progression* to many
courses at one of the UK's leading
modern universities



University of Central Lancashire

* subject to meeting the specified entry criteria.
Visit www.oncampus.global/uclanprogression for a full list of progression degrees.

2017-2018



ONCAMPUS is proud to work in partnership with UCLan to offer high-quality university preparation programmes for international students on the University campus.



Experience more @ UCLan

UCLan is a modern University with a strong tradition and a truly international focus. Situated in the heart of the North West of England, it's Preston campus is a modern green oasis in the heart of the city. Granted university status in 1992, UCLan has roots that go back to 1828 with the founding of the 'Institution for the Diffusion of Knowledge'.

It has now established an international reputation as one of the UK's most innovative universities. The development of a £30 million+ Engineering Innovation Centre (EIC), part of the University's £200 million Campus Masterplan, has ensured that UCLan offers students a world-class educational environment.

Over 30,000 students live in the city of Preston (that's around one in five), so you'll

be surrounded by plenty of like-minded people, and with plenty of landmarks, activities and events, you'll be well occupied outside of the classroom too.

ONCAMPUS, part of Cambridge Education Group, delivers programmes that are designed to give international students an excellent opportunity to prepare for the rigours of academic study at UCLan, and beyond.

find out more:

UCLan highlights	04
Student success	06
The university campus and surrounding area	08
UCLan pathways	10
Campus life	12
Your route to a university degree	14
Guaranteed progression to a UCLan degree	15
Our programmes	16
Progression degrees	22
Academic entry requirements	28
Next steps	30
Application form	31

Visit www.oncampus.global

Download our new Coursefinder app designed to help you discover your ideal degree at UCLan

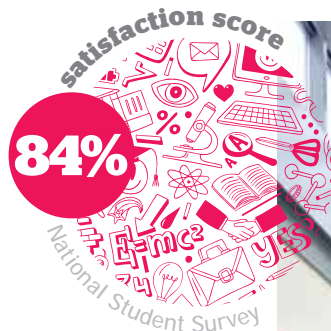
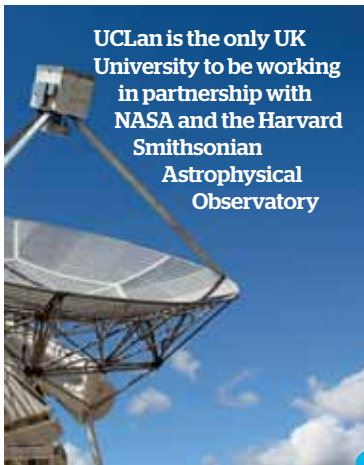


UCLan highlights

LESS THAN **1hr** from Manchester and Liverpool



UCLan is the only UK University to be working in partnership with NASA and the Harvard Smithsonian Astrophysical Observatory



UCLan boasts **Europe's largest** 3D lecture theatre, a 24-hour-access library, forensic crime scene houses, a moot court room and a motorsports workshop



16

subject areas ranked as **World leading or Excellent** (Research Excellence Framework 2014)

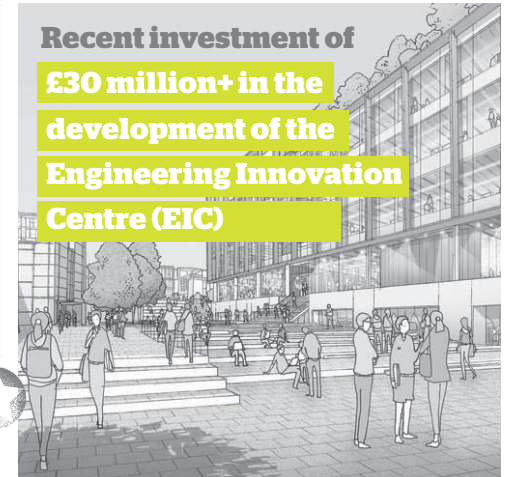


University of Central Lancashire

awarded the maximum **5 stars** for excellence of teaching, employability, internationalisation, facilities, social responsibility



Recent investment of **£30 million+** in the development of the **Engineering Innovation Centre (EIC)**



ACCA | CIM | IFE | EI | CIBSE | NCTJ accredited degree programmes



The Centre for World University Rankings placed UCLan in the **top 3.7%** of all worldwide universities



£13 million

Sir Tom Finney Sports Centre was named after Preston's most famous sporting son, former Preston North End and England legend, Sir Tom Finney

Achieve more

"The teaching style at ONCAMPUS was much more interactive between the teachers and the class, they would always help us when we had a problem. I made lifelong friends at ONCAMPUS and I really enjoyed getting to know about different cultures."



Hok Yee Cheung

Hong Kong Chinese Undergraduate Foundation



Jassim Al Mulla

Qatari Undergraduate Foundation

Alex Lagesse Mauritian
Undergraduate Foundation
Progressed to: BSc (Hons) Physiotherapy

"The teachers at ONCAMPUS were very nice and helpful, they always took the time to explain the course and subject very well. There were lots of different nationalities too, so I discovered new cultures, met new people and, with the university campus and city so close together, everything was close to hand."

Gang Liu

Chinese Undergraduate Foundation



Progressed to: BA (Hons) International Journalism

"I chose UCLan because Media and International Journalism was ranked well. The staff at ONCAMPUS were really kind and helpful and would answer any questions that you had. Our modules were really indepth and the teaching quality was high. I saw my personal tutor every week to check on my grades and progress and to make sure I was on track. Once I finish my degree I hope to go into business or media and work for the BBC or ITV."

Labibah Bello Nigerian
Medicine Undergraduate Foundation
Progressed to: BSc (Hons) Forensic Science and Criminal Investigation

"The teachers at ONCAMPUS were very different (to home) and the information was more applied compared to my home country which was better. My biology classes were really interactive, and the teachers would take their time to answer questions so that you understood. The ONCAMPUS UCLan Medicine Foundation was perfect as it meant I could choose a different pathway at the end of the course if I wanted to."



Ching Yee Au

Hong Kong Chinese Undergraduate Foundation



Iyo Ramadhito

Indonesian Undergraduate Foundation



THE UNIVERSITY CAMPUS AND SURROUNDING AREA

UCLan



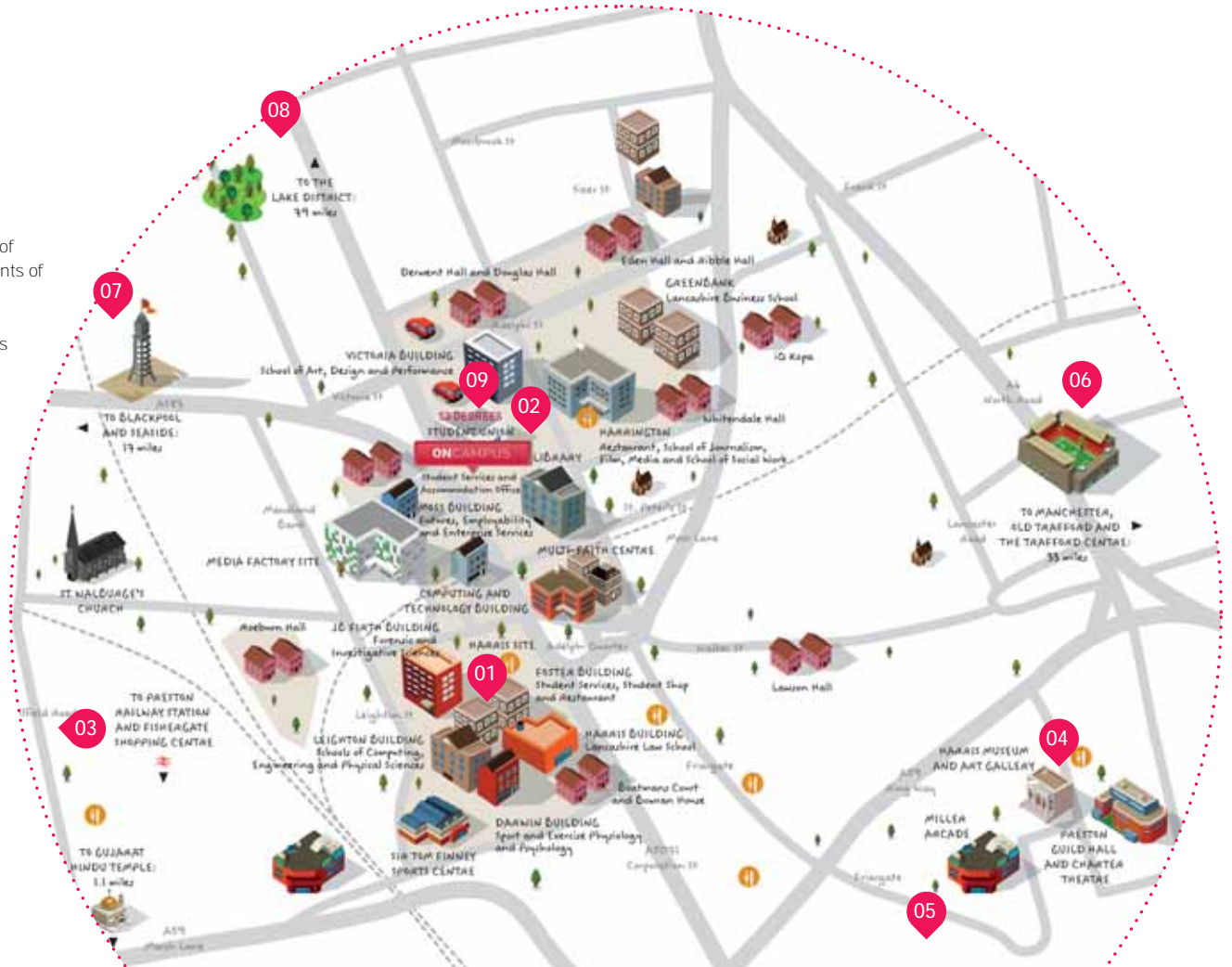
The UCLan campus is conveniently located in the centre of Preston within a short walk of all the shops and restaurants of the city centre.

UCLan has invested £200 million in new campus developments including a new £13 million indoor sports centre. It's less than an hour from the world-famous cities of Liverpool and Manchester, and the stunningly beautiful Lake District.



MAP KEY:

Railway Station | University Accommodation | Church | Mosque | Hindu Temple | Restaurant



Preston Docks
1.8 miles 30 mins 10 mins



Harris Museum and Art Gallery
0.5 miles 10 mins 4 mins



Miller Park
1.4 miles 10 mins 4 mins



Manchester
33.9 miles 1 hour



Blackpool
17.4 miles 38 mins



The Lake District
79 miles 1 hour



53 Degrees Concert Venue
0.1 miles 3 mins 2 mins

UCLan pathways

Business, Economics, Finance and Management

Accounting
Business
Economics
Management
Tourism and Management

Law, Humanities and Social Sciences

Education
Geography
History
Law
Psychology
Journalism

Computing, Engineering and Sciences

Computing
Engineering
Aerospace
Mathematics
Physics

Life Sciences

Biological Science
Chemistry
Forensics
Nutrition
Physiotherapy
Sports Science

For a full list of progression degrees see page 22

TOP university for student support

WISER study skills support
Essay checker
1-to-1 tutorials
Weekly writing workshops
elearn blackboard
How to study effectively

Medicine

This programme gives you the opportunity to apply for Year 1 of the Bachelor of Medicine and Bachelor of Surgery (MBBS).

Students who are successful on the Undergraduate Foundation Programme, at the MBBS interview and have undertaken a volunteer placement prior to applying to the MBBS may be able to progress to the five-year MBBS at UCLan.

Why study Medicine in the UK?

- Medical training in the UK has a long history of excellence and of offering training to overseas doctors. Leaders in Medicine throughout the world have received their training in the UK.
- The UK National Health Service (NHS) is envied across the world for its 'free for everyone at the point of access' ethos.
- The North West of England is not only a vibrant and welcoming area in which to live and study, it is also a culturally, socially and economically diverse region. This means that medical students at UCLan are exposed to a wide range of clinical and public health issues, giving them a broad and varied experience.

Medicine at UCLan

- UCLan has been producing respected graduates in the field of healthcare, dentistry, pharmacy and biomedical science for many years and has a reputation as a leading provider of health education. The MBBS programme has been developed in line with UK General Medical Council (GMC) approval processes.*
- State-of-the-art facilities, including: six high-specification skills laboratories equipped with life-size human simulators to help students develop their clinical skills; the Human Anatomy Resource and Learning Centre where students learn about the workings of the human body; and simulated settings such as a doctor's surgery and patient's home.

Placements

- Placements are undertaken in NHS hospitals and general practice surgeries throughout the region which have first class medical facilities. Our placement hospitals offer a diverse range of services as well as some of the busiest Emergency departments in the North West of England. Throughout all 5 years of the MBBS Curriculum there is also a strong emphasis on primary and community care. Students will undertake placements in General Practice in each year and we work with over 20 experienced GPs and their practice teams across Lancashire and Cumbria.

Opportunities

- The UCLan MBBS is closely aligned with the United States Medical Licensing Examination (USMLE) curriculum to assist students who may want to take this exam and undertake postgraduate training in the USA.
- With multiple options for postgraduate training, our Transitions Lead will work with students to facilitate onward working across the globe.

*The GMC recognises bodies to award primary medical qualifications and quality assures UCLan and its first undergraduate Medicine programme. This takes the form of a year-by-year review following the first cohort to graduation. Only during the final year of the programme will the GMC be able to approve UCLan and add it to its list of bodies that can award primary medical qualifications. There can be no guarantee that this will be the outcome of the review and UCLan has contingency arrangements in place 'in place with the University of Liverpool so that so that students enrolled in the programme will be able to complete their studies.



Brian Aine Ugandan
Studying: Year 2 of MBBS

"I had always wanted to study Medicine, and ONCAMPUS provided a great introduction to studying in the UK. Classes were small, so I benefitted from a lot of individual support and attention. During my **first year** on the MBBS, I had **weekly patient contact** putting what I learnt into practice. This showed me there was much more to being a doctor than just diagnosis; communication, consideration and professionalism are just as important skills."



Experience more

CAMPUS LIFE

UCLan's Olympic-standard £13 million Sir Tom Finney Sports Centre (STFSC) takes pride of place at the heart of the Preston campus. The outstanding facilities were recognised ahead of the London 2012 Olympics when UCLan was an official Olympic training camp.

STFSC offers a range of activities from UCLan Students' Union and sports clubs to instructor-led classes and individual areas. The Centre consists of seven activity areas.

UCLan also boasts a £12 million Sports Arena which provides

facilities for athletics, rugby league, rugby union, football, hockey, netball, tennis and cycling. There are also seven floodlit training grids, a 19-station fitness suite and an indoor room for activities, theory sessions and fitness training.

The latest addition to the Sports Arena will be a £780,000 floodlit pitch, boasting an Evolution XQ 3G surface, which is FIFA one star and World Rugby 22 accredited.

Voted No. 1 in the North West for access to its specialised resources, UCLan's state-of-the-art library offers a variety of flexible, modern study spaces to accommodate all

types of learning and study styles.

Open 24 hours a day during term time, the library also gives students access to 700 networked computers and a self-service laptop loan facility!

There are group study areas and bookable rooms, individual desks, open access PCs and a Media Suite with Apple Macs.

Over 100 clubs and societies



LIVING IN PRESTON

UNIVERSITY ACCOMMODATION

All **ONCAMPUS** students are offered safe and secure accommodation close to where they are studying. There are around 2,200 rooms available in UCLan halls of residence. The halls are either owned or leased by UCLan, and are located within or very close to the heart of the main campus.

All University halls are self-catering and the prices include all fuel and water bills. Students will receive free Wi-Fi access in all halls owned or leased by UCLan. Every bedroom in UCLan's accommodation also has a study desk and chair, chest of drawers, wardrobe and wash basin.

Rent for university accommodation is among the cheapest in the country. Prices per week range from £79 to £99.

For information on how to apply for accommodation visit www.oncampus.global/uclan/accommodation.

**Accommodation
availability
guaranteed until
31st JULY**



HALLS OF RESIDENCE (Non-Ensuite)

Non-Ensuite halls contain single rooms and are only a few minutes' walk from the library and main teaching buildings. Each bedroom has its own bed, wardrobe, sink, desk, telephone, and free internet connection. The bedrooms are grouped into flats, with four, five or six bedrooms in each flat. Every flat has its own kitchen and bathroom, which can only be accessed by the people who live in that flat.

- four to six rooms in each flat
- shared kitchen
- Wi-Fi

HALLS OF RESIDENCE (En-suite)

En-suite halls contain up to seven study bedrooms in each flat. They are known as en-suite flats because each bedroom has its own washing, shower and toilet facilities. Again, each flat has a shared kitchen/lounge area, which can only be accessed by the people who live in the flat.

- up to seven rooms in each flat
- en-suite

STUDENT COVER

It's essential for International Students to take out adequate insurance whilst studying. Student Cover has been created in partnership with Endsleigh, the UK's largest student insurance provider. With both Standard and Premium options, Student Cover is specifically designed to meet your needs whilst studying with us – from the time you set off to the moment you arrive back home.



Download our new pre-arrival app designed to support you before you arrive

For more information about Student Cover visit www.oncampus.global/insurance

Your route to a university degree

Master's degree

Master's Foundation

🕒 2 or 3 terms

👤 21

📊 From 5.0

📄 Degree

📅 September, January, March

Undergraduate degree

Pre-University

Undergraduate Foundation

🕒 3 terms

👤 17

📊 4.5

📄 11-12

📅 September, January

Medicine Undergraduate Foundation

🕒 3 terms

👤 17

📊 From 6.0

📄 12

📅 September

English Language

English Language Module

🕒 1 term

👤 17

📊 From 4.0

📅 September, June

🕒 Number of terms 👤 Age 📊 IELTS level 📄 Number of years of previous high school study 📅 Start Dates

Achieve more

Guaranteed progression*

ONCAMPUS UCLan offers guaranteed progression* to a wide range of undergraduate and postgraduate degrees at UCLan on successful completion of our Foundation programmes.

Outstanding teaching and support

Through every step of your journey with us, you will be supported by highly qualified teachers and support staff, both in and outside the classroom.

Your **personal tutor** will meet with you regularly to ensure you are on track to pass the programme and progress to your chosen degree.

Your **personal tutor** is also there to help you with any issues you might have inside or outside the classroom.

A proven track record of success

ONCAMPUS is part of Cambridge Education Group, the UK's leading university pathway provider since 1952.

Cambridge Education Group was the first private institution to offer university foundation programmes in the UK in 1985, and successfully prepares hundreds of students for the UK's top universities every year.

Part of the University from day one

The ONCAMPUS UCLan centre is located at the heart of the University, close to all the University's facilities.

You will receive a University student card, and with it you will have access to all the University's facilities, clubs and societies while you study your ONCAMPUS programme.

You will meet your course leader at the University before you start your degree, and have the opportunity to try out some of the excellent facilities.

Quality assured

ONCAMPUS UCLan is reviewed regularly by the Quality Assurance Agency (QAA), who is responsible for maintaining standards across the UK university system.

QAA Reviewed
Quality Assurance Agency
for Higher Education



*Guaranteed progression is subject to meeting the specified entry criteria
Visit www.oncampus.global/uclanprogression for a full list of progression degrees

Undergraduate Foundation Programme (UFP)

This programme gives guaranteed progression¹ to Year 1 of a wide range of undergraduate degrees.

DEGREE PROGRESSION

Extended UFP	Undergraduate Foundation Programme	Undergraduate degree
4 terms	3 terms	

IELTS 4.0 | IELTS 4.5 | IELTS 5.0 | IELTS 5.5 | IELTS 6.0

The 4-term extended UFP is available to start in June or September.

PROGRAMME DETAILS

Length of programme²:
3 terms

English level:
From 4.5 IELTS or equivalent, with no single element less than 4.0

Academic requirements:
See page 28 for country-specific entry requirements

Minimum age: 17+
(under 18 students are subject to guardianship arrangement)

Hours per week: Up to 25

Examinations/Coursework:
60%/40%

Pass mark for guaranteed progression¹:

- 40% achieved in each academic module
- 6.0 IELTS or equivalent, with no component lower than 5.5, (external assessment)

For a full list of progression degrees see page 22.

¹ Guaranteed progression is subject to meeting the specified entry criteria detailed above. This is the pass mark for progression to most degrees. Some degrees require an additional interview/audition/portfolio and/or higher pass marks; these are indicated on the degree list, and on our website www.oncampus.global/uclanprogression.

² Extended programmes are available if you do not yet have the required English language level. These programmes last 4 terms and include an English Language Module (ELM) followed by the 3 terms of Foundation required to apply for entry to the first year of your undergraduate degree.

Who is this programme designed for?

This programme is designed to prepare international students, who have completed senior secondary education, for entry to undergraduate studies at UCLan. All students who successfully complete the UFP are guaranteed placement on a suitable programme of undergraduate study at UCLan. The UFP is set at level 3, which is equivalent to A level standard in the UK.

How long will I study for?

This programme lasts one academic year (nine months). The year is divided into three terms of seven to eight teaching weeks and one reading week. You will undertake up to **25 hours** of classroom-based study per week.

What will I study?

This programme includes English and three academic subject modules.

English will be integrated into the teaching of academic subjects, as well as being taught separately if you need additional support to develop your English language.

There are four academic pathways to choose from and you will study the pathway most suited to your chosen progression degree. Academic skills relevant to the specific subject area will be taught to fully prepare you for university study.

How will I be assessed?

You will be assessed at regular intervals throughout the programme to ensure you are making the progress required to successfully complete the programme. Full assessment of the programme will take place in the final term. Assessment methodologies are aligned to those that will be experienced in the University environment, and include project work, essays, presentations and unseen examination.



There are five different pathway options. You will study the pathway most suitable for your chosen progression degree.

The pathways and modules are:

- **Business**
Economics and Finance
Business Behaviours
Skills for Business
- **Engineering and Physical Sciences (Lab based)**
Pure Mathematics
Physical Sciences
Skills for Science
- **Humanities and Social Sciences**
Globalisation and Internationalisation
Human Interactions
Skills for Humanities and Social Sciences
- **Life Sciences (Lab based)**
Molecular Biology
Biology and Biochemistry
Skills for Science
- **Medicine**
See page 18

Note: Modules are subject to availability and you will be guided onto the best combination of academic modules for your intended degree when you arrive at **ONCAMPUS** UCLan. For more information on module content visit our website www.oncampus.global

Dates and fees	Per term Standard	Annual Standard (3 terms)	Per term Lab based	Annual Lab based (3 terms)	Progressing to undergraduate degree starting in
25 September 2017 – 10 June 2018	£4,250	£12,750	£4,585	£13,755	Sept 2018
08 January 2018 – 17 August 2018	£4,250	£12,750	£4,585	£13,755	Sept 2018

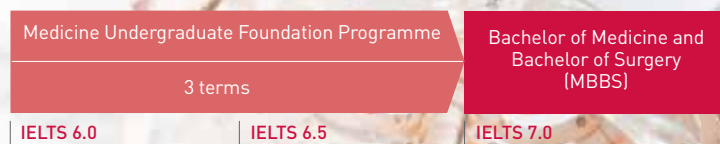
All programmes are subject to a £300 registration fee and £2,200 refundable deposit.

Medicine Undergraduate Foundation Programme

This programme gives you the opportunity to apply for Year 1 of the Bachelor of Medicine and Bachelor of Surgery (MBBS).

Students who are successful on the Undergraduate Foundation Programme, at the MBBS interview and have undertaken a volunteer placement prior to applying for the MBBS may be able to progress to the five-year MBBS at UCLan.

DEGREE PROGRESSION



PROGRAMME DETAILS

Length of programme:
3 terms

English level:
6.0 IELTS in every element

Academic requirements:
See page 28 for country-specific entry requirements

Minimum age: 17+
(under 18 students are subject to guardianship arrangement)

Hours per week:
Up to 23

Examinations/Coursework:
Maths 100% exam
English 100% exam
Biology and Chemistry 70% exam/30% practical

Pass mark for progression:
• 70% overall in each academic module
• 7.0 IELTS in all skills
• Successful MBBS interview
• Evidence of volunteer placement

For a full list of progression degrees see page 22.

Who is this programme designed for?

This programme is designed to prepare international students, who have completed senior secondary education and met the academic requirements listed, to apply for undergraduate study for a Bachelor of Medicine and Bachelor of Surgery degree at UCLan.

How long will I study for?

The duration of the programme is one academic year. The year is divided into two terms of seven to eight teaching weeks, a final term of up to 12 weeks, one reading

week, and an assessment week. You will undertake up to **23 hours** of classroom or lab-based study per week.

What will I study?

This programme includes four core modules, taken by all students throughout the course. These modules are: Biology, Chemistry, Maths and English. You will have a personal tutor to support you throughout the programme. Your personal tutor will help you adjust to life and study in the UK, support you to become a successful Medicine student, and prepare you for your University interview.

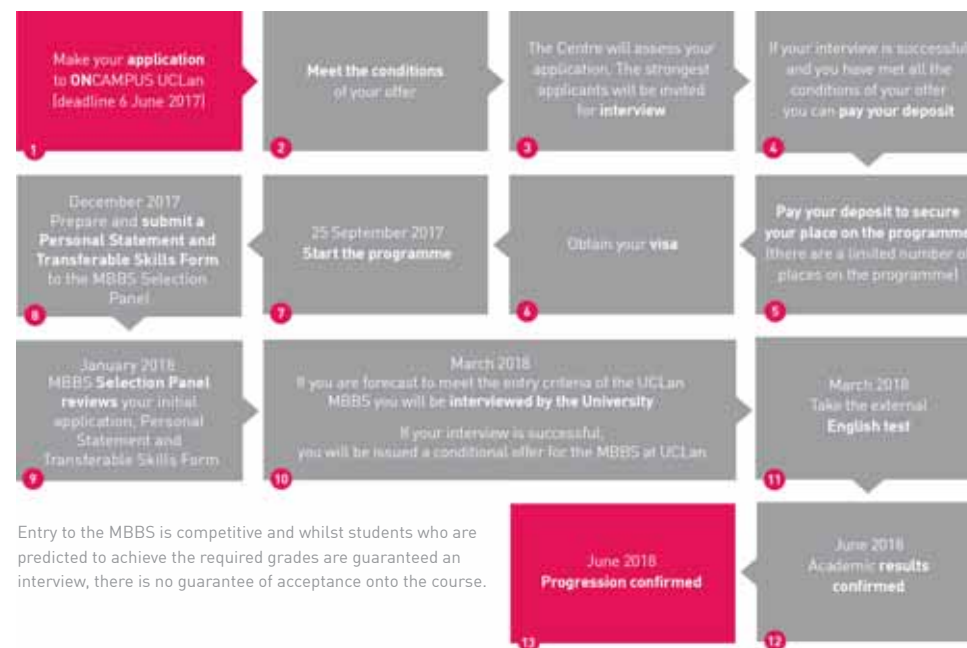


How will I be assessed?

You will be assessed by exam for Maths and English, and by a combination of exam and practical work for Biology and Chemistry.

Volunteer Placement

A volunteer placement must be undertaken to be considered for progression to MBBS.



Entry to the MBBS is competitive and whilst students who are predicted to achieve the required grades are guaranteed an interview, there is no guarantee of acceptance onto the course.

Dates and fees	Number of terms	Per term	Total tuition fees	Progressing to undergraduate degree starting in
25 September 2017 – 10 June 2018	3	£5,665	£16,995	Sept 2018

All programmes are subject to a £300 registration fee and £2,200 refundable deposit.

Master's Foundation Programme (MFP)

The Master's Foundation Programme is available as a two or three-term programme, with guaranteed progression¹ to a wide range of Master's degrees.

DEGREE PROGRESSION



The 4-term extended MFP is available to start in June or September.

PROGRAMME DETAILS

Length of programme²:
2 or 3 terms

English level:

- 3 terms – from 5.0 IELTS or equivalent, with no single element less than 4.5
- 2 terms – from 5.5 IELTS or equivalent, with no single element less than 5.0

Academic requirements:

See page 28 for country-specific entry requirements

Minimum age: 21+

Hours per week: Up to 25

Pass mark for guaranteed progression¹:

- 40% achieved in each academic module
- 6.5 IELTS or equivalent, with no component lower than 6.0, (external assessment)

For a full list of progression degrees see page 26.

¹ Guaranteed progression is subject to meeting the specified entry criteria detailed above. This is the pass mark for progression to most degrees. Some degrees require an additional interview/audition/portfolio and/or higher pass marks: these are indicated on the degree list, and on our website - www.oncampus.global/uclanprogression

² Extended programmes are available if you do not yet have the required English language level. These programmes last 4 terms and include an English Language Module (ELM) followed by the 3 terms of Master's Foundation required to apply for entry to the first year of your Master's degree.

Who is this programme designed for?

This programme is designed to prepare international students for postgraduate study in the UK. The MFP will allow you to improve your English while learning the study skills and research methods that you will need during your Master's degree studies. Depending on the length of the programme you study, you may also study academic modules relating to your chosen progression route.

How long will I study for?

Each term is divided into seven to eight teaching weeks, one reading week and an assessment week. You will undertake up to **25 hours** of classroom-based study per week.

What will I study?

1 term

If you study this programme, you will study two compulsory units of research study skills, including a major project, plus English language.

2 terms

If you study this programme, you will study two compulsory units of a research project,

personal and professional development, plus English language. You will also choose an additional academic subject unit, depending on your intended progression degree.

3 terms

If you study this programme, you will study two compulsory units of a research project, personal and professional development, plus English language. You will also choose two additional academic subject units, depending on your intended progression degree.

How will I be assessed?

Each module will have an assessment schedule, which will be completed by the end of the appropriate term. Assessments will be designed to demonstrate learning across the individual modules of the programme and to allow you to experience a wide range of the assessment methods used in UK postgraduate programmes.

Assessments will include coursework, essays, reports and other structured assignments, oral examination and unseen written examinations.



All MFP students follow the Business pathway but are able to progress to any postgraduate degree listed on page 26.

Academic subjects include:

- **Business**
Organisations and Behaviour
Business Strategy

Note: Modules are subject to availability and you will be guided onto the best combination of academic modules for your intended degree when you arrive at **ONCAMPUS UCLan**.

Programme dates and fees	Number of terms	Tuition fees per programme	Progressing to Master's degree starting in
27 March 2017 – 18 August 2017	2	£8,300	Sept 2017
25 September 2017 – 10 June 2018	3	£12,750	Sept 2018
08 January 2018 – 10 June 2018	2	£8,500	Sept 2018
08 January 2018 – 17 August 2018	3	£12,750	Sept 2018
26 March 2018 – 17 August 2018	2	£8,500	Sept 2018

All programmes are subject to a £300 registration fee and £2,200 refundable deposit.

Achieve more

*with guaranteed progression to a UCLan degree

UNDERGRADUATE DEGREES

DEGREE	ON CAMPUS PATHWAY	ENGLISH REQUIRED (IELTS EQUIVALENT)	PASS MARK FOR PROGRESSION
BA (Hons) Accounting	Business, Economics, Finance and Management	6.0 with no component lower than 5.5	40% in academic modules
BA (Hons) Accounting and Finance	Business, Economics, Finance and Management	6.0 with no component lower than 5.5	40% in academic modules
BA (Hons) Accounting and Financial Management	Business, Economics, Finance and Management	6.0 with no component lower than 5.5	40% in academic modules
BA (Hons) Accounting and Financial Studies	Business, Economics, Finance and Management	6.0 with no component lower than 5.5	40% in academic modules
BA (Hons) Business Administration	Business, Economics, Finance and Management	6.0 with no component lower than 5.5	40% in academic modules
BA (Hons) Business and Management	Business, Economics, Finance and Management	6.0 with no component lower than 5.5	40% in academic modules
BA (Hons) Business and Marketing	Business, Economics, Finance and Management	6.0 with no component lower than 5.5	40% in academic modules
BA (Hons) Business Studies (Accounting and Finance/Human Resource Management/ Business Information Systems/Logistics and Supply Chain/Marketing)	Business, Economics, Finance and Management	6.0 with no component lower than 5.5	40% in academic modules
BA (Hons) Economics	Business, Economics, Finance and Management	6.0 with no component lower than 5.5	40% in academic modules
BA (Hons) Event Management	Business, Economics, Finance and Management	6.0 with no component lower than 5.5	40% in academic modules
BA (Hons) International Business	Business, Economics, Finance and Management	6.0 with no component lower than 5.5	40% in academic modules
BA (Hons) International Business Management	Business, Economics, Finance and Management	6.0 with no component lower than 5.5	40% in academic modules
BA (Hons) International Hospitality Management	Business, Economics, Finance and Management	6.0 with no component lower than 5.5	40% in academic modules
BA (Hons) International Tourism Management	Business, Economics, Finance and Management	6.0 with no component lower than 5.5	40% in academic modules
BA (Hons) Marketing Management	Business, Economics, Finance and Management	6.0 with no component lower than 5.5	40% in academic modules
BA (Hons) Retail Management (Buying/Fashion/Marketing)	Business, Economics, Finance and Management	6.0 with no component lower than 5.5	40% in academic modules
BSc (Hons) Sports Business Management	Business, Economics, Finance and Management	6.0 with no component lower than 5.5	40% in academic modules

* subject to meeting the specified entry criteria.
See page 25 for details of degree courses which do not offer guaranteed progression.



UNDERGRADUATE DEGREES

DEGREE	ON CAMPUS PATHWAY	ENGLISH REQUIRED (IELTS EQUIVALENT)	PASS MARK FOR PROGRESSION
BEng (Hons) Aerospace Engineering	Engineering and Sciences	6.0 with no component lower than 5.5	60% in academic modules. Maths including calculus and physics is compulsory
BSc (Hons)/MPhys Astrophysics	Engineering and Sciences	6.0 with no component lower than 5.5	40% in academic modules
BEng (Hons) Building Services and Sustainable Engineering	Engineering and Sciences	6.0 with no component lower than 5.5	40% in academic modules
BEng (Hons) Civil Engineering	Engineering and Sciences	6.0 with no component lower than 5.5	40% in academic modules
BEng (Hons) Computer Aided Engineering	Engineering and Sciences	6.0 with no component lower than 5.5	40% in academic modules
BSc (Hons) Computer Games Development	Engineering and Sciences	6.0 with no component lower than 5.5	40% in academic modules
BSc (Hons) Computer Network Technology	Engineering and Sciences	6.0 with no component lower than 5.5	40% in academic modules
BSc (Hons) Computing	Engineering and Sciences	6.0 with no component lower than 5.5	40% in academic modules
BSc (Hons) Construction Project Management	Engineering and Sciences	6.0 with no component lower than 5.5	40% in academic modules
BEng (Hons) Electronic Engineering	Engineering and Sciences	6.0 with no component lower than 5.5	40% in academic modules
BSc (Hons) Environmental Management	Engineering and Sciences	6.0 with no component lower than 5.5	40% in academic modules
BEng Energy Engineering	Engineering and Sciences	6.0 with no component lower than 5.5	40% in academic modules
BSc (Hons) Facilities Management	Engineering and Sciences	6.0 with no component lower than 5.5	40% in academic modules
BSc (Hons) Fire and Leadership Studies	Engineering and Sciences	6.0 with no component lower than 5.5	40% in academic modules
BEng (Hons) Fire Engineering	Engineering and Sciences	6.0 with no component lower than 5.5	40% in academic modules
BSc (Hons) Forensic Computing	Engineering and Sciences	6.0 with no component lower than 5.5	40% in academic modules
BSc (Hons) Information Systems	Engineering and Sciences	6.0 with no component lower than 5.5	40% in academic modules
BSc (Hons) Mathematics	Engineering and Sciences	6.0 with no component lower than 5.5	40% in academic modules
BEng (Hons) Mechanical Engineering	Engineering and Sciences	6.0 with no component lower than 5.5	40% in academic modules
BSc (Hons) Motor Sport Engineering	Engineering and Sciences	6.0 with no component lower than 5.5	40% in academic modules
BEng (Hons) Oil and Gas Safety Engineering	Engineering and Sciences	6.0 with no component lower than 5.5	40% in academic modules
BEng (Hons) Robotics and Engineering	Engineering and Sciences	6.0 with no component lower than 5.5	40% in academic modules
BSc (Hons)/MPhys Physics	Engineering and Sciences	6.0 with no component lower than 5.5	40% in academic modules
BSc (Hons) Software Engineering	Engineering and Sciences	6.0 with no component lower than 5.5	40% in academic modules
DEGREE	ON CAMPUS PATHWAY	ENGLISH REQUIRED (IELTS EQUIVALENT)	PASS MARK FOR PROGRESSION
BA (Hons) Asia Pacific Studies (Chinese/Japanese/Korean/Russian)	Humanities and Social Sciences	6.0 with no component lower than 5.5	40% in academic modules
BA (Hons) Children, Schools and Families	Humanities and Social Sciences	6.0 with no component lower than 5.5	40% in academic modules
BA (Hons) Criminology and Criminal Justice	Humanities and Social Sciences	6.0 with no component lower than 5.5	40% in academic modules
BA (Hons) Criminology and Sociology	Humanities and Social Sciences	6.0 with no component lower than 5.5	40% in academic modules
BA (Hons) English	Humanities and Social Sciences	6.0 with no component lower than 5.5	40% in academic modules
BA (Hons) English Language and Literature	Humanities and Social Sciences	6.0 with no component lower than 5.5	40% in academic modules
BA (Hons) English Literature	Humanities and Social Sciences	6.0 with no component lower than 5.5	40% in academic modules
BA (Hons) Geography	Humanities and Social Sciences	6.0 with no component lower than 5.5	40% in academic modules

UNDERGRADUATE DEGREES

DEGREE	ONCAMPUS PATHWAY	ENGLISH REQUIRED (IELTS EQUIVALENT)	PASS MARK FOR PROGRESSION
BA (Hons) History	Humanities and Social Sciences	6.0 with no component lower than 5.5	40% in academic modules
BA (Hons) History and Politics	Humanities and Social Sciences	6.0 with no component lower than 5.5	40% in academic modules
BA (Hons) International Journalism	Humanities and Social Sciences	6.0 with no component lower than 5.5	40% in academic modules
LLB (Hons) Law (refer to website for further routes)	Humanities and Social Sciences	6.0 with no component lower than 5.5	40% in academic modules
BA (Hons) Modern Languages (visit www.uclan.ac.uk for details of language routes available)	Humanities and Social Sciences	6.0 with no component lower than 5.5	40% in academic modules
BA (Hons) Philosophy	Humanities and Social Sciences	6.0 with no component lower than 5.5	40% in academic modules
BA (Hons) Politics and Philosophy	Humanities and Social Sciences	6.0 with no component lower than 5.5	40% in academic modules
BSc (Hons) Psychology (refer to website for further routes)	Humanities and Social Sciences	6.0 with no component lower than 5.5	40% in academic modules
BA (Hons) Religion, Culture and Society	Humanities and Social Sciences	6.0 with no component lower than 5.5	40% in academic modules
BA (Hons) Sociology	Humanities and Social Sciences	6.0 with no component lower than 5.5	40% in academic modules
BA (Hons) Teaching English to Speakers of Other Languages (TESOL) and Modern Languages	Humanities and Social Sciences	7.0 with no component lower than 6.5	40% in academic modules. Previous qualification in the modern language (either GCSE or A2 level) dependent upon the language chosen, is required.
DEGREE	ONCAMPUS PATHWAY	ENGLISH REQUIRED (IELTS EQUIVALENT)	PASS MARK FOR PROGRESSION
BSc (Hons) Archaeology	Life Sciences	6.0 with no component lower than 5.5	40% in academic modules
BSc (Hons) Biological Science	Life Sciences	6.0 with no component lower than 5.5	40% in academic modules
BSc (Hons) Biomedical Science	Life Sciences	6.0 with no component lower than 5.5	40% in academic modules
BSc (Hons) Chemistry	Life Sciences	6.0 with no component lower than 5.5	50% in academic modules. Students should study Chemistry and Maths modules as part of UFP.
MChem Chemistry (4-year degree)	Life Sciences	6.0 with no component lower than 5.5	40% in academic modules
BSc (Hons) Forensic Psychology	Life Sciences	6.0 with no component lower than 5.5	40% in academic modules
BSc (Hons) Forensic Science	Life Sciences	6.0 with no component lower than 5.5	40% in academic modules
BSc (Hons) Forensic Science and Criminal Investigation	Life Sciences	6.0 with no component lower than 5.5	40% in academic modules
MSci Forensic Science and Chemical Analysis (4-year degree)	Life Sciences	6.0 with no component lower than 5.5	40% in academic modules
MSci Forensic Science and Molecular Biology (4-year degree)	Life Sciences	6.0 with no component lower than 5.5	40% in academic modules
BSc (Hons) Medical Sciences	Life Sciences	6.0 with no component lower than 5.5	40% in academic modules
BSc (Hons) Neuropsychology	Life Sciences	6.0 with no component lower than 5.5	40% in academic modules
BSc (Hons) Neuroscience	Life Sciences	6.0 with no component lower than 5.5	40% in academic modules
BSc (Hons) Nutrition and Exercise Sciences	Life Sciences	6.0 with no component lower than 5.5	40% in academic modules
BSc (Hons) Physiology and Pharmacology	Life Sciences	6.0 with no component lower than 5.5	40% in academic modules
BSc (Hons) Policing and Criminal Investigation	Life Sciences	6.0 with no component lower than 5.5	40% in academic modules
BA (Hons) Sports Coaching	Life Sciences	6.0 with no component lower than 5.5	40% in academic modules. Relevant experience required.
BA (Hons) Sports Coaching and Development	Life Sciences	6.0 with no component lower than 5.5	40% in academic modules. Relevant experience required.
BSc (Hons) Sports Therapy	Life Sciences	6.0 with no component lower than 5.5	40% in academic modules. Relevant experience required.
BSc (Hons) Sport Science	Life Sciences	6.0 with no component lower than 5.5	40% in academic modules. Relevant experience required.

UNDERGRADUATE DEGREES

SUCCESSFUL COMPLETION OF THE APPROPRIATE UNDERGRADUATE FOUNDATION PROGRAMME CAN ALSO ALLOW FOR PROGRESSION TO THE FOLLOWING PROGRAMMES OF STUDY. HOWEVER, PROGRESSION TO THESE PROGRAMMES IS NOT GUARANTEED AND STUDENTS WILL BE REQUIRED TO BE SUCCESSFUL AT AN INTERVIEW CONDUCTED BY UCLAN DURING THE FOUNDATION YEAR.

DEGREE	ONCAMPUS PATHWAY	ENGLISH REQUIRED (IELTS EQUIVALENT)	PASS MARK FOR PROGRESSION
BA (Hons) Journalism	Humanities and Social Sciences	7.5 with no component lower than 7.0	60% in academic modules and an interview
BSc (Hons) Physiotherapy	Life Sciences	7.0 with no component lower than 6.5	65% in academic modules and an interview. Limited places each year.
BA (Hons) Sports Journalism	Humanities and Social Sciences	7.5 with no component lower than 7.0	60% in academic modules and an interview
MBBS programme	Medicine	7.0 with no component lower than 7.0	70% in academic modules, successful interview and a completed volunteer placement.

We are continually developing our programme portfolio. If your chosen programme of study does not appear in the listing, please refer to the website, as we can often consider applications on an individual basis. Please note that UCLan also introduces new programmes throughout the year and these too can often be considered for progression on an individual basis.



Download our new Coursefinder app designed to help you discover your ideal degree at UCLan



MASTER'S DEGREES

DEGREE	ONCAMPUS PATHWAY	ENGLISH REQUIRED (IELTS EQUIVALENT)	PASS MARK FOR PROGRESSION
MBA with Professional placement	Business, Economics, Finance and Management	6.5 with no component lower than 6.0	40% in academic modules
MSc Business Management	Business, Economics, Finance and Management	6.5 with no component lower than 6.0	40% in academic modules
MSc Computing with Professional placement	Business, Economics, Finance and Management	6.5 with no component lower than 6.0	40% in academic modules
MSc Finance and Management	Business, Economics, Finance and Management	6.5 with no component lower than 6.0	40% in academic modules
MSc Fire and Rescue Service Management	Business, Economics, Finance and Management	6.5 with no component lower than 6.0	40% in academic modules
MSc Fire Investigation	Business, Economics, Finance and Management	6.5 with no component lower than 6.0	40% in academic modules
MSc Human Resource Management/Development	Business, Economics, Finance and Management	6.5 with no component lower than 6.0	40% in academic modules
MA Intercultural Business Communication	Business, Economics, Finance and Management	6.5 with no component lower than 6.0	40% in academic modules
MSc International Business and Management	Business, Economics, Finance and Management	6.5 with no component lower than 6.0	40% in academic modules
LLM International Business Law	Business, Economics, Finance and Management	6.5 with no component lower than 6.0	40% in academic modules
MSc International Festivals and Tourism Management	Business, Economics, Finance and Management	6.5 with no component lower than 6.0	40% in academic modules
MSc International Hospitality and Event Management	Business, Economics, Finance and Management	6.5 with no component lower than 6.0	40% in academic modules
MSc International Hospitality and Tourism Management	Business, Economics, Finance and Management	6.5 with no component lower than 6.0	40% in academic modules
MSc International Tourism Management	Business, Economics, Finance and Management	6.5 with no component lower than 6.0	40% in academic modules
MSc IT Security with Professional placement	Business, Economics, Finance and Management	6.5 with no component lower than 6.0	40% in academic modules
MSc Marketing Management	Business, Economics, Finance and Management	6.5 with no component lower than 6.0	40% in academic modules
MSc Sports Business Management	Business, Economics, Finance and Management	6.5 with no component lower than 6.0	40% in academic modules
MSc Sports Marketing and Business Management	Business, Economics, Finance and Management	6.5 with no component lower than 6.0	40% in academic modules

SUCCESSFUL COMPLETION OF THE APPROPRIATE MASTER'S FOUNDATION PROGRAMME CAN ALSO ALLOW FOR PROGRESSION TO THE FOLLOWING PROGRAMMES OF STUDY. HOWEVER, PROGRESSION TO THESE PROGRAMMES IS NOT GUARANTEED AND STUDENTS WILL BE REQUIRED TO BE SUCCESSFUL AT AN INTERVIEW CONDUCTED BY UCLAN DURING THE MASTER'S FOUNDATION PROGRAMME.

DEGREE	ONCAMPUS PATHWAY	ENGLISH REQUIRED (IELTS EQUIVALENT)	PASS MARK FOR PROGRESSION
MA Publishing	Business, Economics, Finance and Management	6.5 with no component lower than 6.0	40% in academic modules

APPLICANTS WISHING TO PROGRESS TO THE FOLLOWING DEGREE PROGRAMME WILL BE REQUIRED TO DEMONSTRATE APPROPRIATE TEACHING EXPERIENCE IN LANGUAGE EDUCATION (TYPICALLY AT LEAST ONE-TWO YEARS) AND/OR A PRE-SERVICE CERTIFICATE (CAMBRIDGE CELTA/TRINITY CERT. TESOL OR EQUIVALENT).

DEGREE	ONCAMPUS PATHWAY	ENGLISH REQUIRED (IELTS EQUIVALENT)	PASS MARK FOR PROGRESSION
MA TESOL with Applied Linguistics	Business, Economics, Finance and Management	6.5 with no component lower than 6.0	40% in academic modules

Alumni highlight*

Ren Keat Lau
Malaysian
Studied: Undergraduate
Foundation Programme
Progressed to: BSc (Hons)
Physiotherapy at UCLan

"I decided to come to the UK to study because I wanted to understand more about the UK culture and the different background to learning. At **ONCAMPUS** UCLan I have learnt how to organise my study plan, research in different ways and do more independent work. The classes here are just the right size so the teacher is able to focus on every student, there is lots of opportunity to ask questions if you don't understand. My time here has been enjoyable, knowledgeable and happy. When I finish I would like to work in the UK as a Physiotherapist."

Academic entry requirements

	Undergraduate Foundation	Medicine Undergraduate Foundation
Albania	Completion of high school education with Certificate of Maturity with pass grades	Completion of high school education with Certificate of Maturity with very good grades, including previous study of Chemistry/Biology
Angola	Completion of Secondary School Certificate (Grade 12) with pass grades	Secondary school Certificate (Grade 12) with very good overall grades including Chemistry/Biology
Armenia	Certificate of Secondary Education (Mijnakarg Yndhanur Krtoutian Attestat) with pass grades	Certificate of Secondary Education (Mijnakarg Yndhanur Krtoutian Attestat) with very good overall grades including Chemistry/Biology
Azerbaijan	Certificate of Secondary Education (Attestat) with pass grades	Certificate of Secondary Education (Attestat) with very good overall grades including Chemistry/Biology
Bahrain	Tawjihiya/Thanawihya/General Secondary School Certificate with pass grades	Tawjihiya/Thanawihya/General Secondary School Certificate with very good average including Chemistry/Biology
Bangladesh	Senior School Certificate/Higher Secondary Certificate with pass grades	HSC: with very good average grades including Chemistry/Biology
Botswana	Cambridge Overseas School Certificate with pass grades	Cambridge Overseas School Certificate with very good grades, including Chemistry/Biology
Brunei	Brunei Cambridge O level with pass grades	Brunei Cambridge AS levels with very good grades, including Chemistry
Cambodia	Diploma of Upper Secondary School with pass grades in relevant subjects	Diploma of Upper Secondary School: with very good grades, including Chemistry/Biology
Cameroon	Baccalaureat or Certificat de Probation with pass grades in relevant subjects	Very good overall grade in Baccalaureat or Certificat de Probation, including Chemistry/Biology
China	Completion of Senior Secondary School Year 2 with good grades	Senior Secondary School Graduation Certificate with very good grades, including Chemistry/Biology
Colombia	Bachillerato with pass grades	Bachillerato with very good grades including Chemistry/Biology
Gambia	West African School Certificate or Senior School Certificate with pass grades	West African School Certificate or Senior School Certificate with very good grades, including Chemistry/Biology
Georgia	Certificate of Secondary Education with pass grades	Certificate of Secondary Education with very good grades including Chemistry/Biology
Ghana	West African School Certificate or Senior School Certificate with pass grades	West African School Certificate or Senior School Certificate with very good grades including Chemistry/Biology
Hong Kong	Successful completion of Form 5 with pass grades in relevant subjects OR HKDSE with passes in 3 relevant subjects	HKDSE: 4 subjects (not Chinese) with very good grades, including Chemistry/Biology
India	Completion of Year X with good grades	Year 12 with very good grades, including Chemistry/Biology
Indonesia	SMU 2 with good average	SMA/K 3: with very good average grades, including Chemistry/Biology [STTB and final government exam are not required]
Iran	Successful completion of High School Diploma with pass grades	Successful completion of High School Diploma (3 years) with very good grades, including Chemistry/Biology
Japan	Upper Secondary School Year 2 with good grades	Upper Secondary School Year 3 (12th grade) with good grades
Jordan	Tawjihiya/General Secondary School Certificate with pass grades	Tawjihiya (General Secondary Education Certificate): with very good grades, including Chemistry/Biology
Kazakhstan	Diploma of Completed Secondary Education (Attestat) with pass grades	Diploma of Completed Secondary Education (Attestat) with very good average grades, including Chemistry/Biology
Kenya	East African School Certificate/Cambridge Overseas School Certificate/KCSE with pass grades	East African School Certificate/Cambridge Overseas School Certificate/Kenyan Certificate (KCSE): very good grades, including Chemistry/Biology
Kuwait	Tawjihiya/Thanawihya/General Secondary School Certificate with pass grades	Tawjihiya/Thanawihya/General Secondary School Certificate with very good grades, including Chemistry/Biology
Lebanon	Lebanese Baccalaureate or French Baccalaureate with pass grades	Baccalaureate with very good grades, including Chemistry/Biology
Libya	Secondary Education Certificate	Secondary Education Certificate with very good grades, including Chemistry/Biology
Macau	iGCSE/O levels/Completion of Form 5 or Senior Middle 2 with average grades	Completion of Form 6 or Senior 3 with very good grades, including Chemistry/Biology

	Undergraduate Foundation	Medicine Undergraduate Foundation
Malaysia	SPM (Malaysia Certificate of Education) [or forecast] with average grades/UEC with pass grades	Year 1 of STPM with very good grades, including Chemistry/Biology OR UEC plus one extra year with average grade B+ and B in Chemistry/Biology
Mexico	Bachillerato with pass grades	Bachillerato: very good grades, including Chemistry/Biology
Nigeria	West African School Certificate or Senior School Certificate with pass grades	West African School Certificate or Senior School Certificate with very good grades, including Chemistry/Biology
Oman	Tawjihiya/Thanawihya/General Secondary School Certificate with pass grades	Tawjihiya/Thanawihya/General Secondary School Certificate with very good grades including Chemistry/Biology
Pakistan	Higher Secondary Certificate with pass grades	HSC/ISA/FSC with very good grades including Chemistry/Biology
Qatar	Tawjihiya/Thanawihya/Senior Schooling Certificate with pass grades	Tawjihiya/Thanawihya/General Secondary School Certificate with very good grades including Chemistry/Biology
Russia	Certificate of Secondary Education with good grades in relevant subjects	Certificate of Secondary Education: very good grades including Chemistry/Biology
Saudi Arabia	Tawjihiya/Thanawihya/General Secondary School Certificate with pass grades	Tawjihiya/Thanawihya/General Secondary School Certificate with very good grades, including Chemistry/Biology
Singapore	Singapore/Cambridge O level/IGCSE with pass grades	AS levels with very good grades including Chemistry/Biology
South Africa	National Senior Certificate with pass grades in relevant subjects	National Senior Certificate with very good grades, including Chemistry/Biology
South Korea	Senior High School 2 with good grades in relevant subjects	National Senior Certificate with very good grades, including Chemistry/Biology
Sri Lanka	O levels with average grades	12 years of schooling (year 1 of A level) with very good grades, including Sciences
Taiwan	Senior High School Year 2 with good grades	Senior High School certificate, with very good grades including Chemistry/Biology
Thailand	Mathayom (MAW) 5 with good GPA	Mathayom Suksa (MAW) 6: with very good grades including Chemistry/Biology
Turkey	Successful completion of Devlet Lisen Birtme Diplomasi OR High School Year 3 with pass grades	High School Certificate with very good grades including Chemistry/Biology
Uganda	Ugandan Certificate of Education with pass grades	Ugandan Certificate of Education: very good grades, including Chemistry/Biology
United Arab Emirates	Tawjihiya/Thanawihya/General Secondary School Certificate with pass grades OR Technical Diploma	Tawjihiya/Thanawihya/General Secondary School Certificate with very good grades, including Chemistry/Biology
Uzbekistan	Diploma of Completed Secondary Education with pass grades	Diploma of Specialised Secondary Education with very good grades including Chemistry/Biology
Vietnam	Completion of Year 11 with good average grade	Completion of Year 12 with very good grades including Chemistry/Biology
Zambia	Zambia School Certificate with pass grades	Zambia School Certificate with very good grades and A in Chemistry/Biology
Zimbabwe	ZIMSEC O level – good passes inc. English and Maths	

International curricula - International Baccalaureate (IB), GCE A levels, Canadian, USA, Australian high school	We will consider all international high school results where students have achieved average grades in the subjects relevant to their intended Foundation course.	IB Diploma Year 1: 6 points+ per subject inc. 2 sciences Completion of Year 12: with very good grades including Chemistry/Biology High School Diploma: min. CGPA 3.2 on a 4-point scale with 3.2+ in Chemistry/Biology
---	--	--

Master's Foundation		
All	Successful completion of Bachelor's degree or equivalent, from a recognised university.	

Academic entry requirements listed above should be used as a guide only. Suitability for the programme will be assessed on a case-by-case basis. If your country is not listed, please contact admissions@oncampus.global.

NEXT steps

1

Submit your application by one of the following methods:

Online: www.oncampus.global Email: admissions@oncampus.global
Fax: +44 (0)1223 346181

Post: Admissions Office, ONCAMPUS, Kett House, Station Road, Cambridge, CB1 2JH, United Kingdom

Please remember to include all relevant documentation:

- academic transcripts (with translations if not originally in English)
- evidence of English level
- passport.

Additional documentation may be required depending on the course. Our Admissions team will contact you should this be the case.

2

Our Central Admissions team will review your application.

- We will send you an offer letter which will list any outstanding conditions. We will remove any conditions that have already been met.
- If we think the course is not right for you, we will suggest an alternative.
- If we have any queries about your application, we will contact you for further information.

3

Your place can only be confirmed once all conditions have been met, including payment of the deposit/registration fee or proof of government sponsorship. Only once all conditions have been met, can your place be confirmed, although once the deposit is paid we will hold a place for you.

- Please note that if you require a visa to study with us, you may need to provide additional evidence to comply with the visa regulations in the UK. These are the requirements of the government and not of ONCAMPUS. Your assistance in meeting these requirements is much appreciated.

4

Once you have paid your deposit and met all the conditions of offer, we will confirm your place and send you a CAS (Confirmation of Acceptance for Study) or a Confirmation of Enrolment (CoE) if you do not need a CAS.

If you need a visa, you will need to use your CAS/CoE to support your visa application. Please note a CAS can only be issued three months before the start of the course.

- We will send you pre-arrival information, including how to book accommodation should you require it.

5

You will then need to apply for a visa if you require one to study in the UK. It is your responsibility to obtain a visa before you travel to join the course.

If you do not have a valid visa, you will not be able to join the course so please make sure you apply as soon as possible.

6

You will need to pay at least the first term's tuition fees before you begin your programme of study at ONCAMPUS.

- You should arrive on the weekend before the arrival date; please check your CAS statement or CoE for further details.
- Manchester airport is the closest international airport to ONCAMPUS UCLan. You can transfer to your accommodation by train, coach or taxi. Public transport is the cheapest option. Read the pre-arrival information we will send you for more details.



ONCAMPUS UCLan

APPLICATION FORM

Apply ONLINE at www.oncampus.global/apply or return this form to:

Admissions Office, ONCAMPUS, Kett House, Station Road, Cambridge, CB1 2JH, United Kingdom
Tel: +44 (0)1223 345698 Fax: +44 (0)1223 346181 Email: admissions@oncampus.global

Please write neatly using BLOCK CAPITALS in black ink or typescript.

Incomplete application forms submitted without ALL the supporting documents will delay the decision process.

1. Use of agent (if none, please proceed to section 2)

Please complete the details below and see section 15 of the Conditions of Enrolment which can be found at www.oncampus.global/terms.

Representative name	Branch
---------------------	--------

2. Personal details (must be completed)

Title (Mr/Mrs/Miss/Ms etc)	
First name(s)	Family name
Date of birth (dd/mm/yy)	Age on entry
Nationality (as passport)	Gender
Country of permanent residence	
Home address	Parent address (if different)
Postcode	Postcode
Country	Country
Mobile (incl. country code)	Mobile (incl. country code)
Telephone (incl. country code)	Telephone (incl. country code)
Student email	

3. Payment of tuition fees

<input type="radio"/> Self	<input type="radio"/> Parent/Guardian	<input type="radio"/> Company Sponsor	<input type="radio"/> Government Sponsor
----------------------------	---------------------------------------	---------------------------------------	--

4. Disability/special needs

If you have a disability, impairment or medical condition which may affect your studies please provide details below.

5. Criminal convictions

Do you have any criminal convictions? ☐ Yes ☐ No (Your enquiry cannot be processed if you do not complete this section)

ONCAMPUS UCLan

APPLICATION FORM

6. Academic history

Please give details of your current or most recent school, college or university.
Please include full transcripts of all your relevant academic qualifications, translated into English.

Institution	Date from	Date to		
Have you previously studied in the UK? <input type="radio"/> Yes <input type="radio"/> No (If YES, please provide details below)				
Type of visa	<input type="radio"/> Tier 4 General	<input type="radio"/> Tier 4 Child	<input type="radio"/> Student Visitor Visa	Visa dates
Have you ever had a visa refusal? <input type="radio"/> Yes <input type="radio"/> No (If YES, please provide details and a brief explanation below)				

7. Details of course(s) for which you wish to apply

Please give details of the **ONCAMPUS** programme for which you are applying. Please also state the subject and study level you are aiming for (undergraduate or Master's degree) alongside the proposed year of study.

University degree you wish to progress to – e.g. BA (Hons) Business Management

ONCAMPUS programme:

Undergraduate Foundation Programme

☐ Business, Economics, Finance and Management ☐ Engineering and Sciences ☐ Humanities and Social Science

☐ Life Science

☐ Medicine Undergraduate Foundation Programme

Master's Foundation Programme

☐ Business, Economics, Finance and Management

Date you want to start the programme:

☐ Sept 2017 ☐ Jan 2018 ☐ March 2018 ☐ June 2018 ☐ Number of terms you want to study

8. Accommodation

Do you require accommodation? <input type="radio"/> Yes <input type="radio"/> No	The Accommodation Team will contact you following your acceptance of the offer using the email address you have provided in this form. Information about the available accommodation options can be found at www.oncampus.global
---	---

9. Student insurance

If you would like our Student Cover insurance included with your offer, please tick the YES box below. Otherwise please tick NO and provide proof of your alternative travel insurance cover when you confirm your place.

Do you require Student Cover insurance? ☐ Yes ☐ No

10. Guardianship

Students who will be under the age of 18 when they start an **ONCAMPUS** programme are required to have a UK guardian as a condition of their placement. If you do not have a UK guardian, **ONCAMPUS** can assist in organising a suitable guardian for you through our partner: College Guardians.

Do you require assistance in organising a UK guardian through College Guardians? <input type="radio"/> Yes <input type="radio"/> No	If NO, please provide proof of alternative adequate cover when you confirm your place.
--	--

ONCAMPUS UCLan

APPLICATION FORM

11. Transfers

You must arrive 24 - 48 hours before the start of your course. We can arrange to meet you at the airport and provide a taxi transfer to your accommodation. Further information will be sent with your confirmation documentation. Please indicate the airport you are travelling to if known.

<input type="radio"/> Leeds Bradford	<input type="radio"/> Manchester	<input type="radio"/> London
--------------------------------------	----------------------------------	------------------------------

12. How did you hear about us?

Please indicate how you heard of these courses

☐ Agent ☐ Exhibition ☐ Family ☐ Internet

☐ Other (please specify)

13. Declaration

I declare that I am applying to **ONCAMPUS** as a genuine student and that the information and supporting evidence and academic documents I have provided are true copies. I understand that by signing this declaration I have read, understood and agreed to the terms and conditions and fees of study at **ONCAMPUS** UCLan as outlined on the **ONCAMPUS** website www.oncampus.global/ terms and agree to comply with UKVI regulations at the time of application and during my course of study.

If you do not have access to the website or would like a written copy of the conditions of enrolment, you can request these from **ONCAMPUS** Central Admissions at admissions@oncampus.global

In order to deliver your education and protect your welfare, Cambridge Education Group (CEG) will collect, keep and otherwise process personal data, including sensitive personal data that relates to you and your circumstances. This will include your name and contact details, and those of your parents, guardians, agent or sponsor. We will also keep data about your education, health, welfare, accommodation, travel, passport, visa, finances and fees.

We will keep this information secure at all times and we will share it within CEG as necessary to run our business, deliver your education and ensure your safety. We will also release this information where it is legally required or lawful to do so, or in the event of a medical emergency if it is necessary to protect your health or the health of others. We will provide reports to your agent, parents or guardian on your progress, and also where necessary with our academic partners such as universities. Some of our data transfers may transfer your data to other countries.

Do you consent to your personal data being stored, processed and released by CEG in this way? ☐

Do you consent to your sensitive personal data including health, welfare, nationality, ethnicity, religious and other data being stored, processed and released in this way? ☐

Do you consent to the reasonable use of your details and academic achievement to be used for marketing purposes? ☐

Signature of applicant	Date
Parent or guardian signature (if applicant is not the fee payer or is under 18)	Date

Checklist

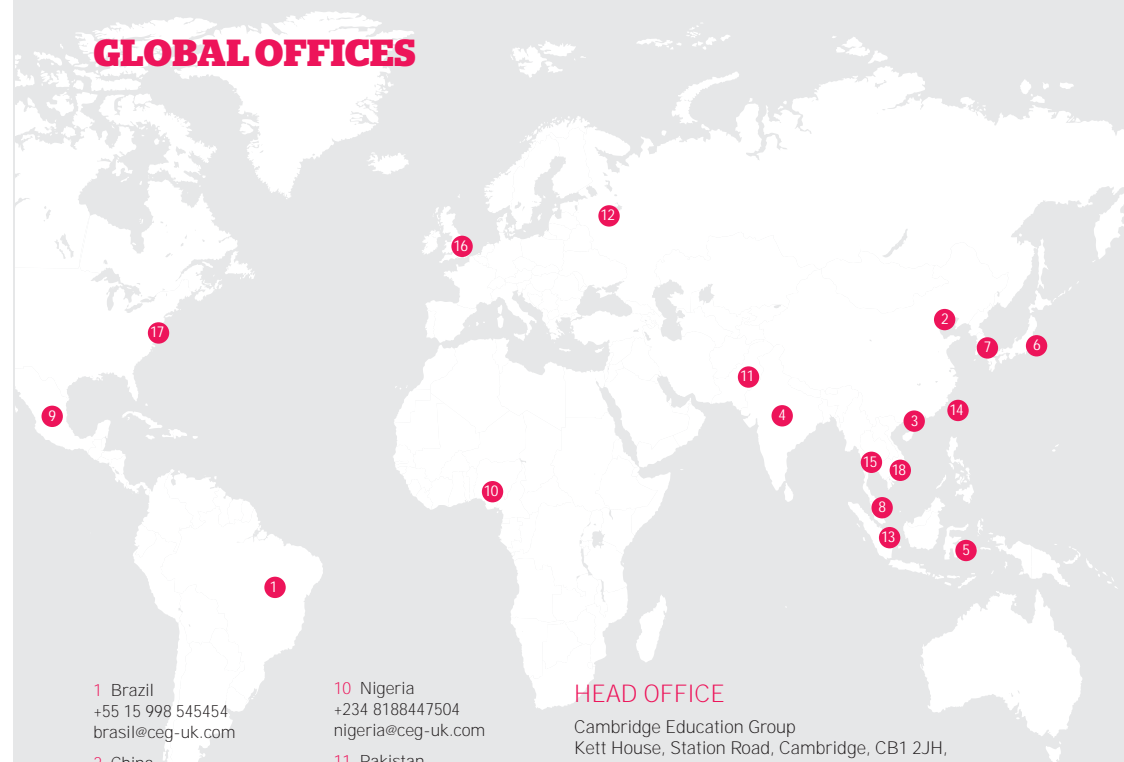
14. Checklist

Before sending the application, please ensure you have:

- ☐ Completed the application form in full and signed it
- ☐ Enclosed your academic qualifications
- ☐ Enclosed a copy of your passport and copies of any previous UK visas
- ☐ Enclosed copies of transcripts for all your relevant qualifications (with certified English translated copies if in any other language)
- ☐ Read the Student Cover insurance policy document (if choosing this option) at www.oncampus.global, or if not choosing Student Cover that you have included proof of alternative insurance
- ☐ Provided an explanation of any gaps in your academic record e.g. CV (if applicable)
- ☐ Enclosed a financial guarantee/sponsor letter
- ☐ Enclosed an immigration check form
- ☐ Provided evidence of sufficient funds in a suitable bank account to meet the UKVI 28 day requirement (if Tier 4 visa required)
- ☐ Enclosed a certificate for a Secure English Language Test such as IELTS



GLOBAL OFFICES



1 Brazil
+55 15 998 545454
brasil@ceg-uk.com

2 China
+86 10 5817 4060
china@ceg-uk.com

3 Hong Kong
+852 2882 4046
hongkong@ceg-uk.com

4 India
+91 9717774215
southasia@ceg-uk.com

5 Indonesia
+62 8111002488
indonesia@ceg-uk.com

6 Japan
japan@ceg-uk.com

7 Korea
+82 2 2076 8400
korea@ceg-uk.co.kr

8 Malaysia
+60 195 512812
malaysia@ceg-uk.com

9 Mexico
+52 1 81-1778 9091
latinamerica@ceg-uk.com

10 Nigeria
+234 8188447504
nigeria@ceg-uk.com

11 Pakistan
+92 345 1444 455
pakistan@ceg-uk.com

12 Russia
+7 495 223 1348
russia@ceg-uk.ru

13 Singapore
+60 195 512812
singapore@ceg-uk.com

14 Taiwan
+886 978 711 878
taiwan@ceg-uk.com

15 Thailand
+66 981 891 565
thailand@ceg-uk.com

16 UK
+44 1223 345698
admissions@ceg-uk.com

17 USA
+1 617 610 8717
usa@ceg-uk.com

18 Vietnam
+8409 1484 9288
vietnam@ceg-uk.com

HEAD OFFICE

Cambridge Education Group
Kett House, Station Road, Cambridge, CB1 2JH,
United Kingdom

Telephone: +44 (0)1223 345698

Email: admissions@oncampus.global

Web: www.oncampus.global

Fax: 44 (0)1223 346181

www.facebook.com/oncampusglobal

CENTRE ADDRESS

ONCAMPUS UCLan
Vernon Building
University of Central Lancashire
Preston PR1 2HE



Information in this brochure is correct at time of print in January 2017.
ONCAMPUS and the University Partner reserve the right to alter, reschedule or
close courses which do not remain viable; students will be informed.

ONCAMPUS
UCLAN



www.oncampus.global