



University of
Sunderland

Guaranteed progression to
one of the UK's leading
modern universities

ONCAMPUS
SUNDERLAND

2020-2021

Achieve more



ONCAMPUS is proud to work in partnership with the University of Sunderland to offer high-quality university preparation programmes for international students on the University campus.

The University of Sunderland is an innovative, forward-thinking university with high standards of teaching, research and support, which sits at the heart of one of the UK's most up-and-coming cities. It has strong links with industry and business, and works closely with some of the world's leading companies.

The University has invested more than £130 million in its two campuses – the Sir Tom Cowie Campus by the riverside, and the City Campus in the city centre – so students can enjoy first-class facilities and high-quality courses that are perfectly placed to ensure a life-changing student experience.



Contents

About University of Sunderland	
Highlights	4
Faculty highlights	6
Progression degrees	
Undergraduate degrees	8
Master's degrees	9
About ONCAMPUS	
How ONCAMPUS works	10
Our Programmes:	
Undergraduate Foundation Programme (UFP)	12
International Year One (IY1)	14
Master's Foundation Programme (MFP)	16
About Student Life	
Accommodation	18
Applying	
Next steps	20
Application form	21

Download our
Coursefinder app
designed to help you
discover your ideal
degree at the University
of Sunderland





About the University of Sunderland

Highlights

4 hours

to London by train

as well as great train links to other UK cities such as Leeds, Manchester, Birmingham, Leicester and more...



State-of-the-art



£8.5 million

Sciences Complex

allows students access to

outstanding facilities

Just over
3 miles
to Sunderland's
International Airshow
– the biggest free annual airshow
in Europe, which includes the
famous Red Arrows.



Over
15

places of
worship



Sunderland is the

2nd

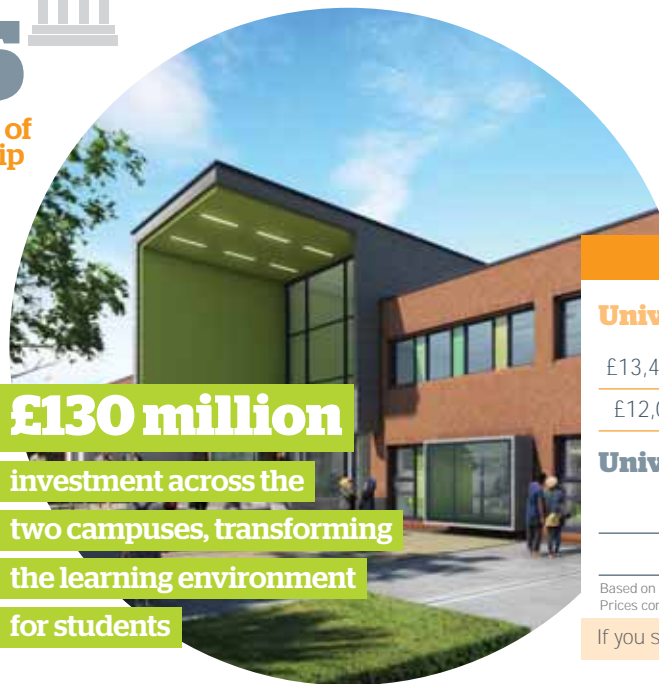
most affordable city
in the UK

(Graduate salaries in the UK survey 2018)



£130 million

investment across the
two campuses, transforming
the learning environment
for students



Stadium of Light 1.2 miles



Population of Sunderland:

170,000+



Sir Tom Cowie Campus 1.4 miles



National Glass Centre 1.4 miles



Aquatic Centre 1.2 miles

Tuition fees from:

Accommodation fees from:

Total cost from:

University of Sunderland

£13,485 x 1 year (ONCAMPUS)

£3,750 x 1 year

£12,000 x 3 years (University)

£3,111 x 3 years

£58,068

(including £1,500 annual
international UG discount)

University in London

£18,750 x 1 year

£5,008 x 1 year

£18,750 x 3 years

£5,008 x 3 years

£95,032

(fees based on a similarly
ranked university)

Based on a business pathway. Accommodation cost for a 40 week academic study year.
Prices correct as of November 2019.

If you study International Year One you could save even more!



Faculty Highlights

Ranked
➤ **2nd**

in the UK for Hospitality, Event Management & Tourism

(Guardian University Guide 2019)



Ranked 16th

(out of 131 universities) in the 'University of the Year' category and 9th in the 'Student Support' category. (Whatuni Student Choice Awards 2019)

CIM | NCTJ | CIPD | IET
accredited degree programmes



Ranked
➤ **16th**

(out of 131 universities) in the Whatuni 'University of the Year' Awards

(Whatuni Student Choice Awards 2019)



Education courses are ranked

2nd in the UK

(Guardian University Guide 2019)



The David Goldman Informatics Centre is a '**computing cathedral**' housing **over 200** workstations



➤ **3rd**

University of Sunderland is ranked 3rd for business courses overall in the UK (Guardian University Guide 2019)

RANKED 13th

in the UK for Mechanical Engineering

(Guardian University Guide 2019)



Engineering students have the opportunity to join the **Formula Student team** which designs, builds, tests and races cars



➤ **14th**

University of Sunderland is ranked 14th in the UK for Media & Film Studies degrees (Guardian University Guide 2019)

TOP COURSES

(Guardian University Guide 2019)

- No 02 Hospitality, Event Management & Tourism
- No 06 Film Production & Photography
- No 13 Mechanical Engineering
- No 14 Media & Film Studies
- No 20 Education
- No 23 Art
- No 31 Journalism, Publishing & Public Relations
- No 33 Fashion & Textiles
- No 35 Pharmacy & Pharmacology
- No 38 Accounting & Finance

Sunderland partners with some of the world's largest organisations such as:

MICROSOFT | YAHOO! | NISSAN | PROCTER & GAMBLE



Undergraduate Degrees you can progress to

with guaranteed progression* to a University of Sunderland degree.
Progression to Year 2 of these degrees available through the International Year One programme.

*subject to meeting the specified entry criteria.

ONCAMPUS PROGRESSION PATHWAY: BUSINESS, ECONOMICS, FINANCE AND MANAGEMENT	PASS MARK FOR PROGRESSION (IN ACADEMIC MODULES): 40%	ENGLISH REQUIRED IELTS EQUIVALENT: 6.0 (no component lower than 5.5)
BA (Hons) Accounting and Finance ¹	BA (Hons) Business and Marketing Management	
BA (Hons) Business and Economics	BA (Hons) Events Management ¹	
BA (Hons) Business and Financial Management	BA (Hons) International Tourism and Hospitality Management ¹	
BA (Hons) Business and Human Resource Management	BSc (Hons) Tourism Management	
BA (Hons) Business and Management ¹	LLB (Hons) Law	

¹ These degrees are also available at the University of Sunderland London campus.

ONCAMPUS PROGRESSION PATHWAY: ENGINEERING AND SCIENCES	PASS MARK FOR PROGRESSION (IN ACADEMIC MODULES): 40%	ENGLISH REQUIRED IELTS EQUIVALENT: 6.0 (no component lower than 5.5)
BEng (Hons) Automotive Engineering	BSc (Hons) Cybersecurity and Digital Forensics	
BSc (Hons) Business Technology	BSc (Hons) Computer Science	
BEng (Hons) Electronic and Electrical Engineering	BSc (Hons) Game Development	
BEng (Hons) Manufacturing Engineering	BSc (Hons) Information Communication Technology	
BEng (Hons) Mechanical Engineering	BSc (Hons) Web and Mobile Development	
BSc (Hons) Computing		

ONCAMPUS PROGRESSION PATHWAY: LIFE SCIENCES	PASS MARK FOR PROGRESSION (IN ACADEMIC MODULES): 40%	ENGLISH REQUIRED IELTS EQUIVALENT: 6.0 (no component lower than 5.5)
BSc (Hons) Biomedical Science	BSc (Hons) Psychology with Counselling	
BSc (Hons) Biopharmaceutical Science	BSc (Hons) Public Health	
BSc (Hons) Cosmetic Science	BSc (Hons) Sports and Exercise Sciences	
BSc (Hons) Exercise, Health and Fitness	BSc (Hons) Sports Coaching	
BSc (Hons) Physiological Sciences	MPharm Pharmacy (4-year degree) 7.0 IELTS (no component less than 6.5), 65% in academic modules and an interview. Places limited to 10 per year.	
BSc (Hons) Psychology		

ONCAMPUS PROGRESSION PATHWAY: HUMANITIES AND SOCIAL SCIENCES	PASS MARK FOR PROGRESSION (IN ACADEMIC MODULES): 40%	ENGLISH REQUIRED IELTS EQUIVALENT: 6.0 (no component lower than 5.5)
BA (Hons) Childhood Studies You will need a DBS check and medical to progress onto this degree.	BA (Hons) Journalism	
BA (Hons) Digital Film Production	BA (Hons) Media Production	
BA (Hons) English	BA (Hons) Media, Culture and Communication	
BA (Hons) Fashion Journalism	BA (Hons) Social Media Management	
BA (Hons) Film and Media	BA (Hons) Sports Journalism	
BA (Hons) History	BSc (Hons) Criminology	
	BSc (Hons) Sociology	

Master's Degrees you can progress to

with guaranteed progression* to a University of Sunderland degree.
*subject to meeting the specified entry criteria.

MASTER'S FOUNDATION PROGRAMME:	PASS MARK FOR PROGRESSION (IN ACADEMIC MODULES): 40%	ENGLISH REQUIRED IELTS EQUIVALENT: 6.0 (no component lower than 5.5)
Extended Award MA/MSc (please see page 17)	MSc Computing (suitable for those who have not studied computing before)	
LLM Criminal Law and Procedure	MSc Cybersecurity	
LLM Human Rights	MSc Data Science	
MA Education (you will need higher grades or interview for progression)	MSc Digital Marketing and Analytics	
MA English Studies (you will need higher grades or interview for progression)	MSc Drug Discovery and Development	
MA Integrated Marketing Communications	MSc Electronic Engineering	
MA Magazine Journalism	MSc Engineering Management	
MA Marketing ¹	MSc Environment, Health and Safety (IOSH Accredited)	
MA Media Production (Film and Television) You will need higher grades or interview for progression.	MSc Finance and Management ¹	
MA Radio You will need higher grades or interview for progression.	MSc Human Resource Management	
MA Teaching English to Speakers of Other Languages (TESOL) (you will need higher grades or interview for progression)	MSc International Business Management	
MBA (Generic)	MSc Manufacturing Engineering	
MBA Cybersecurity	MSc Mechanical Engineering	
MBA Enterprise and Innovation	MSc Project Management	
MBA Finance	MSc Psychology (suitable for students who have not studied Psychology as a first degree)	
MBA Hospitality Management	MSc Public Health	
MBA Human Resource Management	MSc Sports and Exercise Sciences	
MBA Marketing	MSc Tourism and Aviation	
MBA Supply Chain Management	MSc Tourism and Events	
	MSc Tourism and Hospitality	

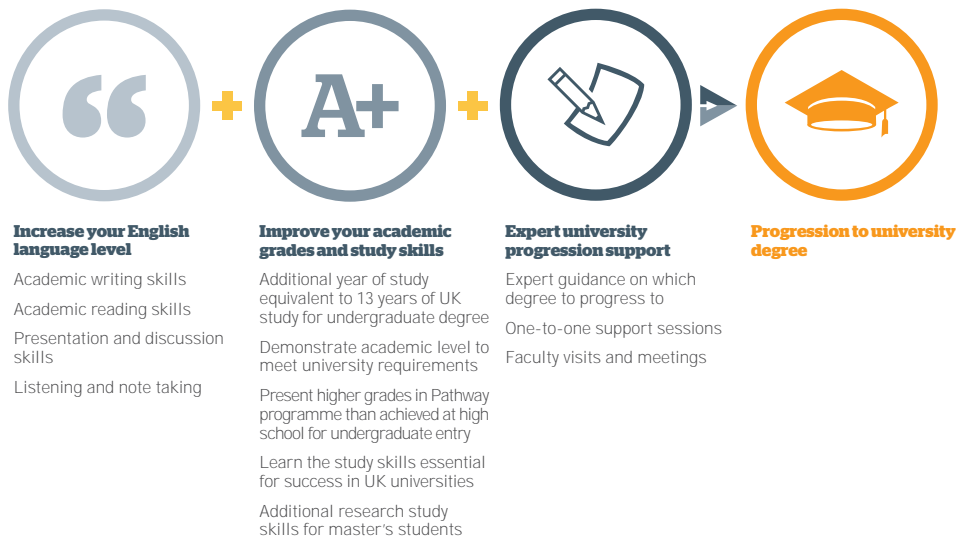
¹ These degrees are also available at the University of Sunderland London campus.

About **ONCAMPUS**

How ONCAMPUS Works

Access all the **University's facilities**

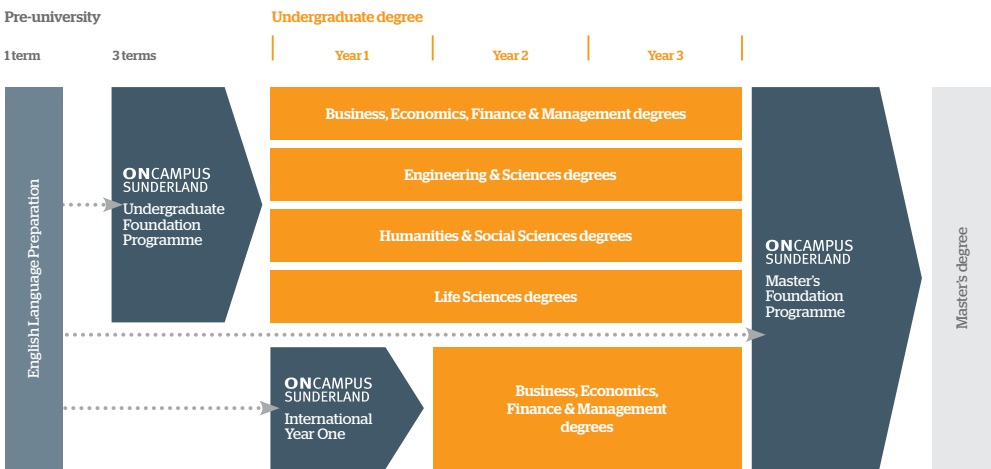
Our programmes at **ONCAMPUS Sunderland** are designed for international students who do not meet the requirements for direct entry to the University of Sunderland to study. You will benefit from the support we offer in preparing you to progress to the University.



Your route to a degree at University of Sunderland

ONCAMPUS Sunderland offers guaranteed progression* to a wide range of undergraduate and postgraduate degrees at the University of Sunderland, on successful completion of our Foundation, Year One or Master's programmes.

*Subject to meeting the specified criteria.



ONCAMPUS gives you...

Outstanding teaching and support

Through every step of your journey with us, you will be supported by highly qualified teachers and support staff, both in and outside the classroom.

Your personal tutor will meet with you regularly to ensure you are on track to pass the programme and progress to your chosen degree.

Your personal tutor is also there to help you with any issues you might have inside or outside the classroom.

A proven track record of success

ONCAMPUS is part of Cambridge Education Group, one of the UK's leading university pathway providers since 1952.

Cambridge Education Group was the first private institution to offer university foundation programmes in the UK in 1985, and successfully prepares thousands of students for the UK's top universities every year.

Part of the University from day one

The ONCAMPUS Sunderland centre is located at the heart of the University, close to all the University's facilities.

You will receive a University student card, and with it you will have access to all the University's facilities, clubs and societies while you study your ONCAMPUS programme.

You will meet your course leader at the University before you start your degree, and have the opportunity to try out some of the excellent facilities.

Quality assured

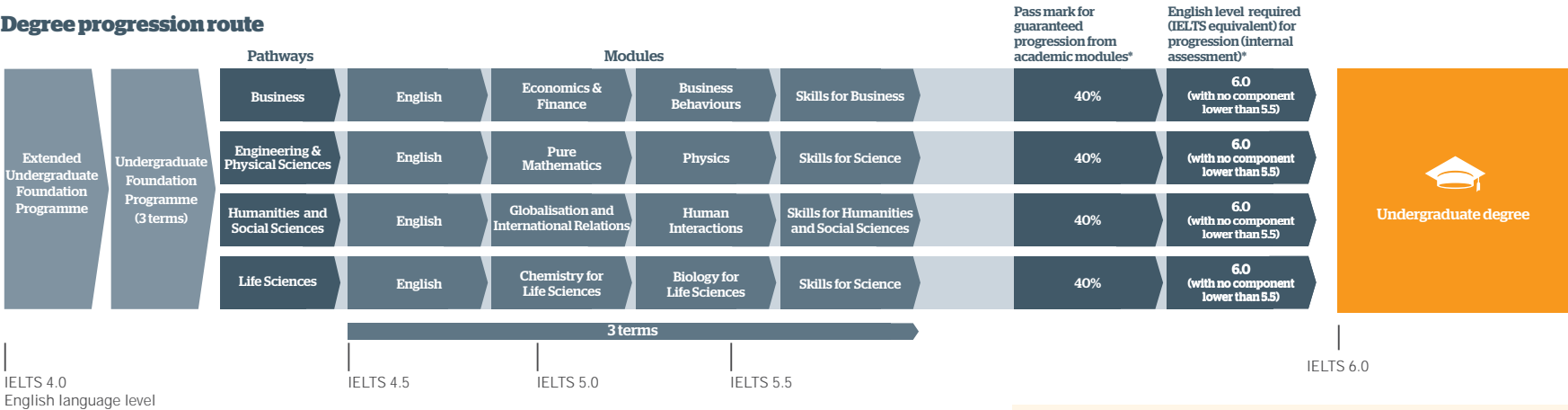
ONCAMPUS Sunderland is reviewed regularly by the Quality Assurance Agency (QAA), which is responsible for maintaining standards across the UK university system.



Undergraduate Foundation Programme (UFP)

This programme gives guaranteed progression* to Year 1 of a wide range of undergraduate degrees or the International Year One in Business and Management.

Degree progression route



Entry criteria

English level:

From 4.5 IELTS

or equivalent, with no single element less than 4.0, for 3-term UFP.

An extended programme is available if you do not have the required English language level. This programme lasts 4 terms and includes an English language module (ELPP) followed by 3 terms of UFP.

Academic requirements:

11-12 years

Successful completion of 11-12 years of schooling with good grades. Please see www.oncampus.global for academic entry requirements.

Guideline minimum age:

16

Must be 17 at the start of the intended degree programme.

For a full list of progression degrees see pages 08–09

*subject to meeting the specified entry criteria

Dates and fees	Number of terms	Business and Humanities tuition fee	Engineering and Life Sciences tuition fee	Progressing to undergraduate degree starting in
08 June 2020 - 06 June 2021	4	£17,815	£18,925	September 2021
21 September 2020 - 06 June 2021	3	£13,485	£14,595	September 2021
21 September 2020 - 13 August 2021	4	£17,980	£19,460	September 2021
26 October 2020 - 13 August 2021	3.5	£15,730	£17,025	September 2021
05 January 2021 - 13 August 2021	3	£13,485	£14,595	September 2021

All programmes are subject to a £300 registration fee and £2,200 deposit which is offset against the last term's fees. 20 and 25 week EAP programmes are available starting in June and August, please contact us for further details. 3.5 term programmes consist of English language during the first 0.5 term although some academic content may be included. An Under 18 Supplement applies to all students under the age of 18 at the start of their programme. For more details see page 19 and visit www.oncampus.global/About-us

Note: Modules are subject to availability and you will be guided onto the best combination of academic modules for your intended degree when you arrive at ONCAMPUS Sunderland. For more information on module content visit our website www.oncampus.global.




"There is little distraction in Sunderland, which is good for me. It was easy to settle in, find my way around and make friends with students of different nationalities. My teachers are helpful, open to anything you want to ask. The style of teaching is different as they want you to understand and give your own answer rather than repeating exactly what they said, which is a much better way to learn."

About ONCAMPUS

International Year One (IY1)

This programme offers guaranteed progression* to Year 2 of selected Business degrees.

Progress to a selection of Business degrees



Degree progression route

4 term International Year One (academic content in each term)

Extended International Year One (1 term English, 3 terms IY1)

International Year One (3 terms)

Pathway

Business, Management and Accounting

Modules

All students study the following modules, plus English for Academic Purposes:

- Academic & Professional Skills for Business
- Organisational Behaviour
- Principles of Management
- Management Accounting
- Business Environment
- Marketing and Advertising or Financial Accounting

3 or 4 terms

Pass mark for guaranteed progression from academic modules*

40%

English level required (IELTS equivalent) for progression (internal assessment)*

6.0 (no component lower than 5.5)

Undergraduate degree

IELTS 4.5

English language level

IELTS 5.0

IELTS 6.0

Entry criteria

English level:

From 5.0 IELTS

or equivalent for 3-term IY1.

Two 4-term programmes are available depending on your English language and/or academic level.

Academic requirements:

12 years

Successful completion of high school with good grades. Please see www.oncampus.global for academic entry requirements.

Guideline minimum age:


17+

Under-18 students are subject to Under 18 Supplement

For a full list of progression degrees see pages 08–09.

*subject to meeting the specified entry criteria.

Progressed to: MPharm | University of Sunderland



Sabeedeh Sohail | Pakistani

"My teachers are just lovely. In my studies, all of them are really good. They are always encouraging me. If I get 75%, but I was expected to get 80% and I get a little discouraged, they talk through ways to improve and reassure me that I'll do better next time."

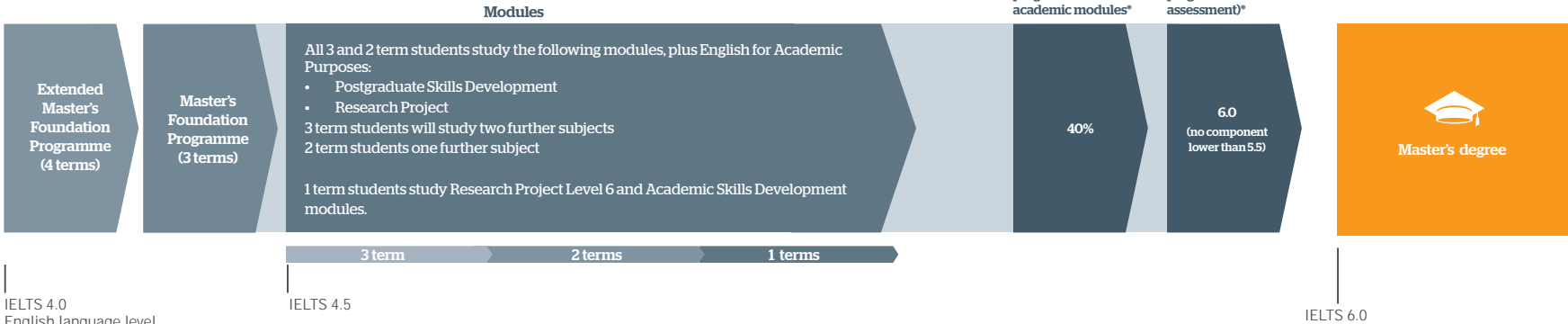
14

15

Master's Foundation Programme (MFP)

The Master's Foundation Programme is a one, two or three-term programme, with guaranteed progression* to a wide range of Master's degrees at the University of Sunderland.

Degree progression route



Entry criteria

English level:

From 4.5 IELTS or equivalent, with no single element less than 4.0 for 3-term MFP. An extended programme is available if you do not have the required English language level. This programme lasts 4 terms and includes an English language module (ELPP) followed by 3 terms of MFP.

Academic requirements:

Degree Successful completion of Bachelor's degree or equivalent from a recognised university.

Guideline minimum age:

21+

For a full list of progression degrees see pages 09
*subject to meeting the specified entry criteria.



Dates and fees	Number of terms	Tuition fee	Progressing to Master's degree starting in
08 June 2020 - 06 June 2021	4	£17,815	September 2021
21 September 2020 - 11 December 2020	1	£4,495	January 2021
21 September 2020 - 06 June 2021	3	£13,485	September 2021
21 September 2020 - 13 August 2021	4	£17,980	September 2021
26 October 2020 - 13 August 2021	3.5	£15,730	September 2021
05 January 2021 - 13 August 2021	3	£13,485	September 2021
05 January 2021 - 06 June 2021	2	£8,990	September 2021
22 March 2021 - 13 August 2021	2	£8,990	September 2021

All programmes are subject to a £300 registration fee and £2,200 deposit which is offset against the last term's fees.
3.5 term programmes consist of English language during the first 0.5 term although some academic content may be included.
20 and 25 week English Language programmes are available starting in June and August, please contact us for further details.

University of Sunderland

Extended Master's Degree MA/MBA/MSc

All applications should be made directly to The University of Sunderland

Fast-track your career in business, marketing or human resource management with this extended course designed to enable third-class degree holders to pursue a postgraduate qualification. Demonstrate your value to employers and qualify for senior roles with significant responsibility.

The course prepares you for senior roles and will accelerate your progress towards well-paid positions of leadership. On completion of the first term, you can transfer to a range of postgraduate courses, including:

- MA Marketing (15-month)
- MA Integrated Marketing Communications (15 month)
- MSc Human Resource Management (15-month)
- MSc Finance and Management (15-month)
- MSc International Business Management (15 month)
- MSc Digital Marketing and Analytics (15 month)
- MSc Tourism and Events (15 month)
- MSc Tourism and Hospitality (15 month)

In advance of this, you will take the module 'Introduction to Postgraduate Projects, Research Methods and Study Skills', which will give you the skills required to undertake a project relevant to their chosen course.

Course Length	Teaching	International Fee	Intakes*
15 months	Full time	£15,500 (price on application)	November 2020 July 2021

*Courses and intakes are subject to change and can be removed.
An international student discount of £1,000 is available.

Living in Sunderland Accommodation

Panns Bank Accommodation



**Accommodation
guaranteed until
31 JULY**

**Rent is from
£1,250 per term
and includes
utility bills***

All **ONCAMPUS** students are guaranteed safe and secure accommodation close to where they are studying. The University has its own quality, purpose-built accommodation (Panns Bank), giving you a great value for money option, offering single study-bedrooms in a secure environment.

There is a free Campus Bus service for students, which picks you up from this accommodation and takes you to either campus. This service operates throughout the day.

Students can also buy Travel Cards to use on the Metro at a reduced cost.

An alternative accommodation option is Cassaton House, a privately owned, luxury, state-of-the-art student residence located in the heart of Sunderland city centre, next to the main train station and less than a 10 minute walk from **ONCAMPUS**.



Self-catering,
with fully
equipped kitchens



En-suite

Key features:



Wi-Fi.



Free Campus Bus
service.



Prices from £1,250 for
a standard room per
term.

*Accommodation options and prices shown are for 2019/20. These are subject to change. Please visit www.oncampus.global for further details.



Panns Bank, Bedroom



Cassaton House, The Hub



Cassaton House, Study Room



Cassaton House, The Hub



Cassaton House, Bedroom



Student Cover

It's essential for international students to take out adequate insurance while studying. 'Student Cover' has been created in partnership with Endsleigh, the UK's largest student insurance provider. With both standard and premium options, 'Student Cover' is specifically designed to meet your needs while studying with us – from the time you set off to the moment you arrive back home.

For more information about Student Cover visit www.oncampus.global/insurance

Under 18 Supplement

Under British Law, anyone under 18 is legally classed as a child and such students often have different needs for welfare and support. **ONCAMPUS** provides a range of extra tailored services covered by the under 18s supplementary fee, which is automatically added to the student's account. Students have access to experienced welfare personnel who provide both academic and emotional support before and after arrival, as well as an independent guardian from the professionally-accredited College Guardians initiative.

For more information visit www.oncampus.global/about-us



Applying

Next steps

1 Submit your application by one of the following methods:

- Online: www.oncampus.global Email: admissions@oncampus.global

Please remember to include all relevant documentation:

- Academic transcripts (with translations if not originally in English)
- Evidence of English level
- Copy of Passport

- Explanation of any study gaps
- Copies of any previous/current study visas

Additional documentation may be required depending on the course. Our Admissions team will contact you should this be the case.

2 Our Central Admissions team will review your application.

We will send you an offer letter which will list any outstanding conditions. We will remove any conditions that have already been met.

If we think the course is not right for you, we will suggest an alternative.

If we have any queries about your application, we will contact you for further information.

3 To accept your place on the course you will need to meet all the remaining conditions, including payment of the deposit/ registration fee or proof of government sponsorship. We can only confirm your place once all conditions have been met, although once the deposit is paid we will hold a place for you.

Please note that if you require a visa to study with us, you may need to provide additional evidence to comply with the visa regulations in the UK. These are the requirements of the government and not of **ONCAMPUS**. Your assistance in meeting these requirements is much appreciated.

4 Once you have paid your deposit and met all the conditions of offer, we will confirm your place and send you a Confirmation of Acceptance for Studies (CAS) or a Certificate of Enrolment (CoE) if you do not need a CAS.

If you need a visa, you will need to use your CAS/CoE to support your visa application. Please note a CAS can only be issued three months before the start of the course.

5 You will then need to apply for a visa if you require one to study in the UK. It is your responsibility to obtain a visa before you travel to join the course.

If you do not have a valid visa for studies in the UK, you will not be able to join the course. You are required to pay at least the 1st term's tuition fees before you begin your studies at **ONCAMPUS**. You should arrive on the weekend before the start date of the course, please check your CAS or CoE for further details.

6 We will send you pre-arrival information.

The accommodation application form will be included in the pre-arrival information. You should complete the form, selecting your preferred option, and return it to **ONCAMPUS Sunderland** by email to liveinsunderland@oncampus.global.

Newcastle is the closest international airport to **ONCAMPUS Sunderland**. You can transfer to your accommodation by Tube, train, coach or taxi. Please be advised that public transport is the cheapest option, please refer to pre-arrival information that we send you for more details.

ONCAMPUS SUNDERLAND APPLICATION FORM

Apply ONLINE at www.oncampus.global/apply or return this form to:
Admissions Office, **ONCAMPUS**, 50/60 Station Road, Cambridge, CB1 2JH, United Kingdom
Tel: +44 (0)1223 345698 Email: admissions@oncampus.global

Please write neatly using BLOCK CAPITALS in black ink or typescript.
Incomplete application forms submitted without ALL the supporting documents will delay the decision process.

1. Use of agent (if none, please proceed to section 2)

Please complete the details below and see section 7 of the Conditions of Enrolment which can be found at www.oncampus.global/terms

Agency name	Counsellor name
Branch	Counsellor email address

2. Personal details (must be completed)

Title (Mr/Mrs/Miss/Ms etc)	Date of birth (dd/mm/yy)
First name(s)	
Family name	
Nationality (as passport)	Gender
Country of permanent residence	
Home address	Parent address (if different)
Postcode	Postcode
Country	Country
Mobile (incl. country code)	Mobile (incl. country code)
Telephone (incl. country code)	Telephone (incl. country code)
Student email (your application cannot be processed if this is missing)	

3. Payment of tuition fees

☐ Self ☐ Parent/ Guardian ☐ Company sponsor ☐ Government sponsor

4. Disability/special needs

If you have a disability, impairment or medical condition which may affect your studies please provide details below.

I consent to **ONCAMPUS** processing my/the student's disability, impairment or medical condition information provided as part of this application.

Signature of student: _____ Signature of parent/legal guardian: _____

You have the right to withdraw your consent at any time by emailing the **ONCAMPUS** data protection officer on DPO@ceg-uk.com

ONCAMPUS SUNDERLAND

APPLICATION FORM

5. Is there anything that could negatively impact your application such as a Criminal Conviction?

☐ Yes (please provide further details below) ☐ No

Your enquiry cannot be processed if you do not complete this section.

6. Academic history

Please give details of your current or most recent school, college or university.
Please include full transcripts of all your relevant academic qualifications, translated into English.

Institution

Date from Date to

Have you previously studied in the UK? ☐ Yes ☐ No (If YES, please provide details below)

Type of visa ☐ Tier 4 General ☐ Tier 4 Child ☐ Short Term Study Visa
☐ Other (please specify)

Visa dates (start and end dates)

Have you ever had a visa refusal? ☐ Yes ☐ No (If YES, please provide details and a brief explanation below)

7. Details of course(s) for which you wish to apply

Please give details of the **ONCAMPUS** programme for which you are applying. Please also state the subject and study level you are aiming for (undergraduate or Master's degree) alongside the proposed year of study.

University degree you wish to progress to e.g. – BA (Hons) Business Management

ONCAMPUS Programme:

Undergraduate Foundation Programme

☐ Business, Economics, Finance and Management ☐ Engineering and Sciences ☐ Humanities and Social Science
☐ Life Science

International Year One Programme

☐ Business, Economics, Finance and Management (3 term)
☐ Business, Economics, Finance and Management (4 term)
☐ Business, Economics, Finance and Management (Extended (1 term English, 3 terms IY1))

Master's Foundation Programme

Date you want to start the programme: ☐ June 2020 ☐ Sept 2020 ☐ Jan 2021 ☐ March 2021

Number of terms you want to study:

8. Student insurance

If you would like our Student Cover insurance included with your offer, please tick the YES box below. Otherwise please tick NO and provide proof of your alternative travel insurance cover when you confirm your place.

Do you require Student Cover insurance? ☐ Yes ☐ No

ONCAMPUS SUNDERLAND

APPLICATION FORM

9. Under 18 Supplement (Guardianship Students)

Students who will be under the age of 18 when they start an **ONCAMPUS** programme are required to have a UK guardian as a condition of their placement. If you do not have a UK guardian, **ONCAMPUS** can assist in organising a suitable guardian for you through our partners, College Guardians.

Do you require assistance in organising a UK guardian through College Guardians? ☐ Yes ☐ No

If NO, please provide proof of alternative adequate cover when you confirm your place.

10. How did you hear about us?

Please indicate how you heard of these courses (Please tick)

☐ Agent ☐ Exhibition ☐ Family ☐ Internet

☐ Other (please specify):

11. Declaration

I declare that I am applying to **ONCAMPUS** as a genuine student and that the information and supporting evidence and academic documents I have provided are true copies. I understand that by signing this declaration I have read, understood and agreed to the terms and conditions and fees of study at **ONCAMPUS** Sunderland as outlined on the **ONCAMPUS** website www.oncampus.global/terms and agree to comply with UKVI regulations at the time of application and during my course of study.

If you do not have access to the website or would like a written copy of the conditions of enrolment, you can request these from **ONCAMPUS** Central Admissions at admissions@oncampus.global

We would like to send you information about services relevant to **ONCAMPUS** students and your stay in the UK if you are happy to receive such information.

I am happy to receive information about **ONCAMPUS** products and offers by:

☐ Email ☐ Telephone ☐ Text message ☐ Social Messaging ☐ Social Media

Signature of applicant

Date

Parent or guardian signature
(if applicant is not the fee payer or is under 18)

Date

If you wish to stop receiving marketing communications at any time then please click the unsubscribe option in any email received or alternatively please email cegmarketing@ceg-uk.com. For further information on how **ONCAMPUS** processes your personal data please see our Privacy Policy <http://www.cambridgeeducationgroup.com/about-us/privacy-policy.htm>



Checklist

Before sending the application, please ensure you have:

- Completed the application form in full and signed it
- Enclosed your academic qualifications
- Enclosed a copy of your passport and copies of previous UK visas
- Enclosed copies of transcripts for all your relevant qualifications (with certified English translated copies if in any other language)
- Provided an explanation of any gaps in your academic record e.g. CV (if applicable)
- Enclosed a certificate for a Secure English Language Test such as IELTS
- Read the Student Cover insurance policy document (if choosing this option) at www.oncampus.global/insurance, or if not choosing Student Cover that you have included proof of alternative insurance



Follow our latest news

- facebook.com/oncampusglobal
- instagram.com/oncampus_global
- twitter.com/oncampusglobal

HEAD OFFICE
Cambridge Education Group
50/60 Station Road, Cambridge,
CB1 2JH, United Kingdom
Telephone: +44 (0)1223 345698
Email: admissions@oncampus.global
Web: www.oncampus.global



www.carbonbalancedprinter.com
Healeys Print Group - Reg. 2108

Information in this brochure is correct at time of issue in November 2019. ONCAMPUS and the University Partner reserve the right to alter, reschedule or close courses which do not remain viable: students will be informed. Please check our website at www.oncampus.global for updated information.



**University of
Sunderland**

**ONCAMPUS
SUNDERLAND**

Visit www.oncampus.global

