



Schools and Colleges

# International Prospectus

2017/2018



London Birmingham Cambridge

Founded in London in 1973 by three Cambridge University graduates, the MPW Group is one of the best known and well respected independent college groups in the UK.

### Why MPW?

International students come to MPW because they want to gain places at the top-ranked universities. Most of our students are aiming at UK universities, but we also send students to universities in the United States, Singapore, Australia, Hong Kong and Europe. In common with our British students, they are ambitious and understand that gaining offers from world-ranked universities will provide them with a platform for successful and fulfilling futures.

### About MPW

For over 40 years, MPW has been helping students to gain places at the UK's top universities by providing intensive tuition in small groups (a maximum of eight students in an A level class), regular testing and examination practice sessions, personal supervision by our Directors of Studies and Personal Tutors and lots of individual help.





- Experienced and well-qualified teachers
- Close supervision by Directors of Studies/Personal Tutors
- Individual help
- Friendly and supportive environment

## Courses Offered

- A levels (2-year, 18-month, 1-year fast-track)
- International Foundation Programmes (1-year courses)
- Art pre-Foundation/Portfolio (1-year)
- Pre-sessional English
- Pre-A level (1-year)
- GCSE (1-year or 2-year)

MPW offers a variety of clubs, sports and activities, including football, basketball, international evenings, debating society, theatre visits, expeditions, music, art, photography, community and charity work, and visiting speakers. As well as giving them a chance to mix with other students and to enjoy a break from their studies, these extra activities will help with university applications as they allow our students to demonstrate that they are well-rounded individuals who will contribute in many ways to their chosen universities.





“

*Relaxed, collegiate atmosphere combined with a strict attitude to attendance and work. Small classes, great flexibility, plenty of communication with parents and a strong emphasis on what it takes to pass exams and get into university.*

”

—The Good Schools Guide

MPW accepts a limited number of international students. These students have chosen to attend MPW because they want to study in the UK alongside UK students.

### International Students

Our international students come to MPW to follow A level or the International Foundation programmes in order to be able to apply for the top UK universities. Every year, students from more than 20 countries (including Singapore, Malaysia, Korea, Japan, USA, Russia, Kazakhstan, Nigeria, South America, and Europe) study at MPW alongside their UK classmates. The most popular degree courses for MPW's international students are Economics, Business Management, Architecture, Medicine, Engineering, Law, Computing, Psychology and Biomedical Sciences.

In addition, MPW runs specialist programmes for students wishing to follow creative courses such as Art, Fashion Design, Interior Design, and Graphic Design at university. In the last 12 years, all MPW's international students who applied to the University of the Arts London were successful in being offered places.

In the last five years, MPW's international students have been successful in gaining places at the top-ranked UK universities including Cambridge, Oxford, Imperial College, the London School of Economics (LSE), University College London (UCL), Warwick, Bristol, Edinburgh, St Andrew's, King's, Bath, York and Nottingham.

### Living and Studying in the UK

MPW's international students follow the same academic programme as our UK students, and are taught alongside them. We feel that this is extremely important in order to prepare our international students for their university studies after completing their courses at MPW. However, experience has shown us that international students often need extra help in adapting to a new environment, a new way of studying, and a new culture. For these reasons, MPW provides extra academic and social support for international students, and keeps in close contact with parents and guardians to ensure that the students are not only successful, but also that they enjoy and are enriched by the experience of studying in the UK.

### Supervision of Progress

Each student has a Director of Studies/Personal Tutor, whose role is to supervise students' academic progress, university applications and general welfare. Regular meetings are held to discuss test results, progress in class, homework, university applications and reports. Students receive two written reports each term which can, if needed, be translated and e-mailed or posted to parents or guardians. Wherever possible, MPW's International staff (based either in MPW's overseas representative offices or in the UK) will be available to meet parents to discuss progress and university applications face-to-face. A schedule of our international visits can be found on the international pages on our website.

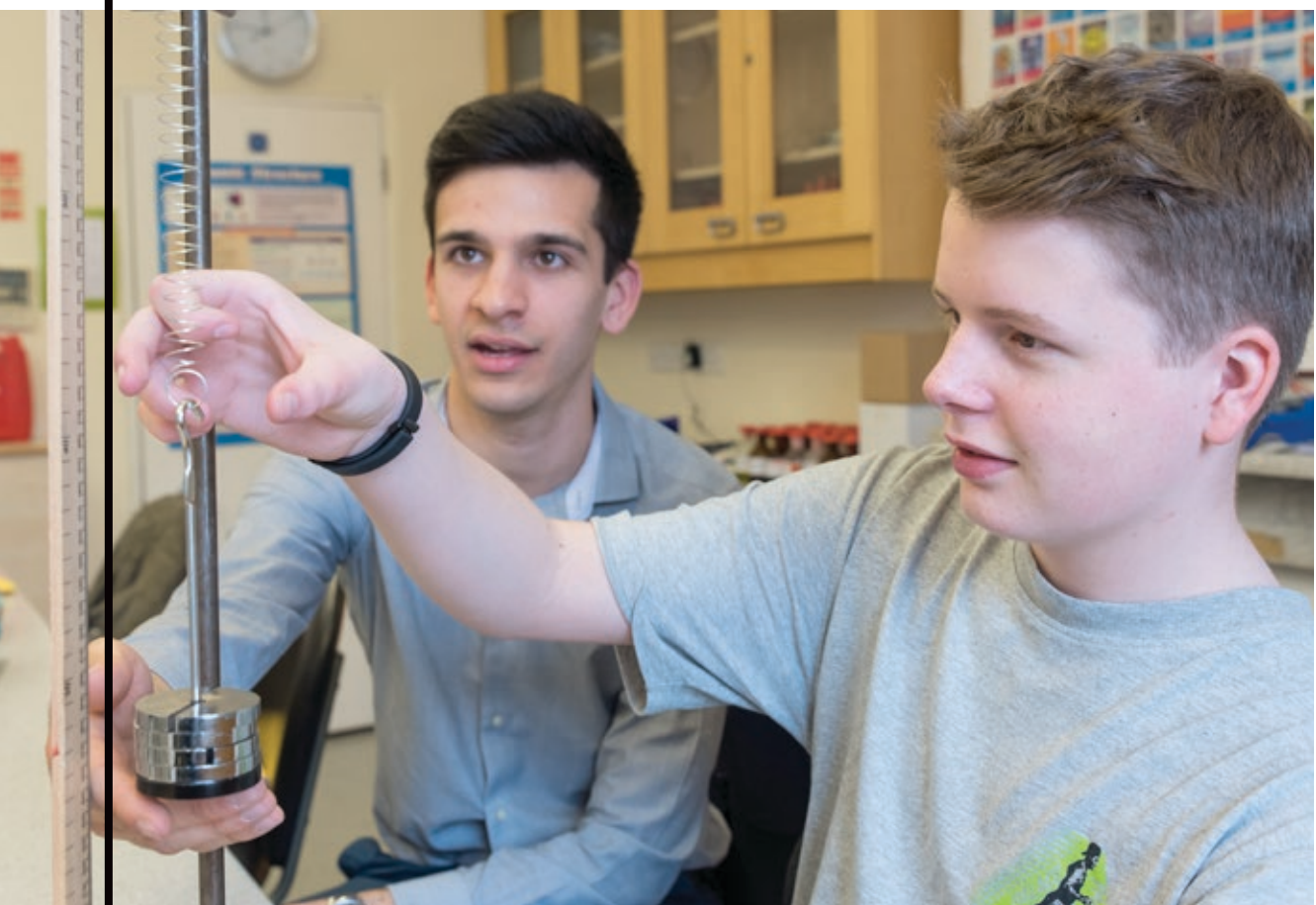


MPW's Directors of Studies and university advisors write a series of books, sold in bookshops throughout the UK, on admission to Oxford and Cambridge, and to degree courses such as Medicine, Art and Design, Law, Business, Economics and Management, and Engineering.

## Teaching

With a maximum of eight students in an A level class, we can provide the students with the close attention

that they require. Teaching is supported by specially written sets of course notes or self-assessment materials. MPW places a high importance on examination preparation and practice, which includes regular revision tests, timed assignments and practice examinations. In our experience this regular testing plays a major part in building students' confidence and motivation. All of these are done under examination conditions to ensure that each student is fully prepared for the examinations which are sat in April/May/June each year.



# Academic Programmes

## MPW Programmes

Students on A level programmes normally study four subjects, chosen from over 40. We will give detailed advice at the interview stage about the most suitable subject combinations. We offer three A level programmes:

- 2-year courses (this is the normal programme followed by UK students). September start
- 18-month courses. January start
- 1-year fast-track courses. September start

There is no restriction on subject combinations, but we will provide advice on the best combinations for particular degree courses. For example, students wishing to study an Economics or Finance-related degree are recommended to choose Mathematics, Further Mathematics, Economics and one from Geography, Politics, Physics or Psychology; whilst students who wish to study Engineering at university would choose Mathematics, Further Mathematics,

Physics and either Chemistry or Economics.

Architecture applicants study Mathematics, Physics, Art and Design plus one other subject.

Students who are aiming for creative arts courses at university can follow a 1-year Art Pre-Foundation/Portfolio programme.

MPW also offers two prestigious International Foundation courses that give students the opportunity to progress to a variety of degree programmes at some of the UK's leading universities.

## University of London International Foundation Programme

The IFP is a one year programme for students wishing to study a social science or finance related degree at a top-ranked university.



### What makes the University of London International Foundation Programme at MPW different?

Students who enrol onto this programme will benefit from MPW’s renowned teaching methods and academic support drawing on our 40 years of teaching experience at A level.

- 30 hours teaching per week
- First class academic instruction
- Academic and personal support from a Personal Tutor
- Broad and highly flexible extra-curricular opportunities
- Excellent facilities and prestigious location
- Tailored exam preparation
- Regular testing and feedback

### NCUK International Foundation Year

The NCUK IFY offer two pathways, science and engineering or business and humanities. The IFY gives students the opportunity to study at some of the UK’s leading universities in a variety of subjects.

### What makes the NCUK International Foundation Year at MPW different?

- Guaranteed entry to one of 11 NCUK universities
- Direct access to over 3000 degree programmes
- Includes an academic English module
- Maximum class size of 14 students
- Personal tuition and individual support
- Regular testing and feedback
- Tailored exam preparation

### A and AS level Courses

Accounting	<b>Geography</b>	<b>Music</b>
Ancient History	Geology	Philosophy
<b>Art</b>	<b>German</b>	<b>Photography</b>
<b>Biology</b>	Graphic Communication	<b>Physics</b>
<b>Business Studies</b>	Greek	Politics
Ceramics	<b>History</b>	<b>Psychology</b>
<b>Chemistry</b>	History of Art	<b>Religious Studies</b>
<b>Classical Civilisation</b>	<b>ICT</b>	<b>Russian</b>
Economics	<b>Italian</b>	<b>Sociology</b>
<b>English Language</b>	<b>Latin</b>	<b>Spanish</b>
English Language and Literature	Law	Statistics
<b>English Literature</b>	Mandarin	Textiles
Film Studies	<b>Mathematics</b>	Theatre Studies
<b>French</b>	Media Studies	
Further Mathematics	<b>Modern Greek</b>	

*Subjects in bold are also available at GCSE or IGCSE. Subjects may vary between colleges.*



The MPW schools are situated in prime locations in three of the UK's most famous cities. Accommodation is in safe, comfortable living environments, that allow the student to concentrate on studying.

### Where Will I Study?

MPW London is located in London's beautiful and historic South Kensington area, close to London's famous museums, parks and galleries. MPW London is on the same street as Imperial College, one of the world's top science, engineering and technology universities.

Birmingham is the UK's second city, situated in the centre of England. It is a dynamic university city, with a mixture of exciting new architecture and

historic Victorian buildings. Our Birmingham school is in the green and quiet Edgbaston area, close to the University of Birmingham campus.

Cambridge is home to possibly the most famous university in the world, which recently celebrated its 800 year anniversary. The city's history and academic traditions make it a unique place to study. MPW Cambridge is located next to Cambridge University's botanical gardens.

	MPW London	MPW Birmingham	MPW Cambridge
A levels	✓	✓	✓
GCSE	✓	✓	✓
University of London IFP	✓		✓
NCUK IFY		✓	
Art Pre-Foundation/Portfolio	✓		
Oxbridge Preparation	✓	✓	✓
Medical Programme	✓	✓	✓
University Entrance Tests Preparation	✓	✓	✓
Subject and Skills Surgeries/Workshops	✓	✓	✓
Activities Programme	✓	✓	✓
Supervised Accommodation	✓	✓	✓
Pre-sessional English	✓		✓



## Where Will I Live?

MPW students stay in a range of accommodation options. Most popular are the fully-supervised (by live-in house parents) student residences, within walking distance of the colleges. Students have a choice of single studio rooms or single rooms with shared bathrooms. Some students choose to live with local families or in privately-rented apartments or shared houses.

## MPW London Supervised Student Residence – King's Road Chelsea

The residence is provided by Kensington Student Services (KSS) at one of the most desirable postcodes in London – King's Road.

Support is unsurpassed with live-in house parents, security and a dedicated on-site Hospitality and Maintenance Team.

Located on the King's Road in Chelsea, a short walk from the College and situated in a safe area of central London, this high specification residence provides en-suite studio rooms that feature:

- Fully supervised with live-in house parents on call 24/7 during term-time
- Single studio rooms, all with en-suite facilities (also includes fridge, microwave and cooking hob)
- Room pricing includes daily breakfast, weekly linen and towel change
- 24/7 security staff and CCTV
- Free Internet (WiFi)
- Communal TV room and 2 additional communal kitchens on each floor
- Fully secure, daily curfews and house rules for students
- Residents may also order an evening meal via a special meal-ordering service, delivered to the accommodation
- Optional laundry service

## Accommodation



### MPW Birmingham Accommodation – Greenfield Crescent (on campus)

Also provided by KSS, Greenfield Crescent offers exclusive student accommodation in the heart of Birmingham.

Located next door to the college the new accommodation facility is ideally situated for MPW students in a safe area of Birmingham. This high specification residence provides single, en-suite and studio rooms that feature:

- Fully supervised with live-in house parents on call 24/7 during term-time
- Free Broadband Internet
- Single rooms, some with en-suite facilities
- Communal kitchens and living space
- Fully secure, daily curfews and house rules for students
- Room pricing includes daily breakfast, weekly linen and towel change
- Residents may also subscribe to the evening meal plan which is prepared on-site via a qualified chef
- TV provided in communal areas
- Optional laundry service available
- On-site laundry

“

*The students' social development is excellent.*

*Relationships are very strong; staff and students work well together to create a warm community atmosphere.*

”

—ISI Inspection Report



## MPW Cambridge Accommodation

Kensington Student Services is pleased to offer accommodation within this superb, managed residence a short walk from MPW's Cambridge college.

This elegant building comprises 23 stylish single occupancy rooms with modern furniture. Live-in house parents provide support and supervision

throughout term-time. Within each cluster flat, students have their own room, shared bathroom and access to a large, open plan kitchen which allows easy interaction with fellow students. With our popular meal plan, breakfast is served daily and an evening meal is prepared on-site.



- Fully supervised with live-in house parents on call 24/7 during term-time
- High-speed Broadband
- Fully equipped kitchens/communal areas (students are encouraged to cook with friends and eat together)
- Optional meal plan (breakfast/evening meals)
- Dishwasher and washer dryer
- Laundry service and room cleaning service available
- Excellent location – 15 minute walk to the college
- On-site laundry facility
- Secure bike storage
- CCTV security and secure door entry
- Excellent access to Cambridge

# Results and Destinations

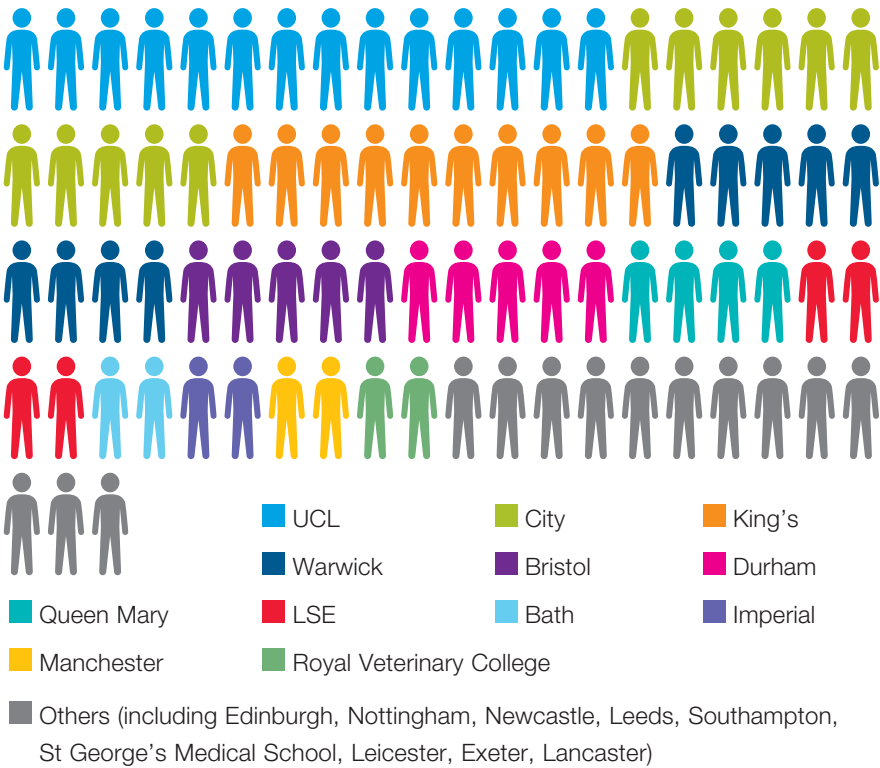
## International Results

MPW's students consistently achieve incredible success and our 2016 graduates are no different. After another truly successful year the majority of our students have progressed to the UK's top Russell Group institutions to study a wide variety of courses. Our individual approach to academic life including regular assessments and one-to-one tuition ensures that our students

are equipped with the study skills and self-belief needed to achieve their maximum potential and secure the best possible grades. Our tutors have a wealth of experience from a wide variety of academic and professional backgrounds and combined with our suite of Trotman Guides, MPW students are in the best possible place for expert university entrance advice.

## Russell Group Placements

MPW works closely with selected international agents and attends events overseas in order to accept a small number of international students. Over 75% of these students were accepted into the prestigious Russell Group universities or the University of London in 2015/2016.



78%

MPW international students achieve A\*-B results over the last five years



## Specialist Placements

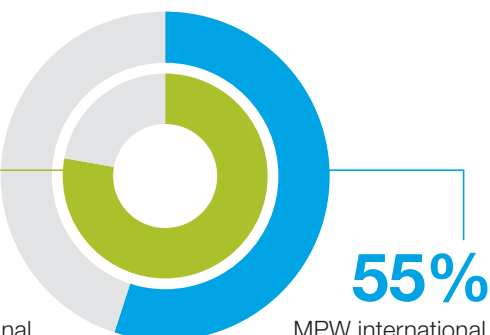
MPW has an excellent record in placing students on specialist courses, including medicine and dentistry. Since 2014 a total of 49 MPW students went on to study medical degree programmes and 15 students gained Oxbridge places.

**Medical:**  
**49**

**Oxbridge:**  
**15**

**76%**

MPW international students  
successful in their applications  
to Russell Group/UoL  
universities in 2015/2016



**55%**  
MPW international  
students achieving  
A\*/A results over  
the last five years

one two three four five  
six seven eight nine ten  
**eleven twelve**

For the twelfth consecutive year, 100% of the  
international applicants for the University of the Arts London  
(including Central St Martins, Chelsea College and London  
College of Fashion) were offered places





## Proven Success



### Proven Success

MPW achieves the highest grades (Excellent or Outstanding) in all UK government inspections.

The MPW schools are inspected regularly by the UK government's appointed inspection agencies, the Independent Schools Inspectorate (ISI) or the Office for Education Standards (Ofsted)

Most recent inspection results:

- MPW London achieved "Excellent" – the highest grade, in all assessment categories
- MPW Cambridge achieved "Outstanding" – the highest grade, in all assessment categories
- MPW Birmingham received "Outstanding" – the highest grade, in all assessment categories

Summaries of inspection reports, and links to the full reports, can be found on the college websites.

### University Entrance

The application procedures for UK universities can be complicated, and the top UK universities are looking for more than just excellent

examination results. Students aiming for UK university places have to apply through the University and Colleges Applications Service (UCAS) and a successful application requires a good deal of help and expertise in order to ensure that the students' achievements, academic strengths and personal qualities are highlighted. Preparation for university applications begins in the Summer Term of the first year of the course for students on the 2-year or 18-month programmes with a series of meetings and seminars. Students continue to work with us on their UCAS applications during the summer holiday by e-mail, and there is further specialist preparation for applications, interviews and entrance tests (required by some universities including Oxford, Cambridge, Imperial College and UCL) at the start of the final year of the course. Students following 1-year programmes will receive help and guidance prior to starting their courses at MPW.

Students who wish to study creative art and design courses at university are given extra help in preparing portfolios of their work.

## Selected Destinations of 2015/2016 International Students

Bath	Artur Mun	Computer Science	Kazakhstan
Bristol	Yujia Kang	Computer Science	China
Bristol	Hu Wing Lau	Economics and Management	Hong Kong
City	Alexandra Shemetova	Investment and Financial Risk Management	Russia
City	Nicolo Meoli	Business Management	Switzerland
Durham	Marianna Negro	Anthropology	Italy
Durham	Nikita Fedorov	Criminology	Russia
Edinburgh	Brandon Papineau	Linguistics	USA
Edinburgh	Rui Zhang	Architecture	China
Exeter	Danilar Arapbaev	Economics and Finance	Kazakhstan
King's	Olga Semenova	Computer Science	Russia
King's	Kasidej Sooksomporn	Biomedical Engineering	Thailand
Lancaster	Danielle Loh	Medicine	Singapore
LSE	Yiran Chen	Social Anthropology	China
LSE	Adeline Wiroyo	Management	Indonesia
LSE	Azaliya Nekhorosheva	Philosophy and Economics	Russia
LSE	Paloma Morales	PPE	Spain
Manchester	Christian Mochimaru	International Business	Philippines
Newcastle	Johann Jaffar	Medicine	Singapore
Oxford	Sanghoon Jung	Mechanical Engineering	South Korea
Queen's Belfast	Zane Freimane	Medicine	Latvia
Royal Veterinary College	Melisa Kalkan	Veterinary Science	Turkey
St George's	Yeh YuTsen	Medicine	Taiwan
UAL	Yilin Guo	Costume Design	China
UCL	Junhan Chen	Management Science	China
UCL	Chudi Gong	Psychology and Language Sciences	China
UCL	Adam Mohd Zaini	Engineering (Chemical)	Malaysia
UCL	Bianca Capatina	Economics and Business	Romania
UCL	Yeong Jae Kim	Management Science	South Korea
UCL	Sho Sato	Human Sciences	Japan
UCL	Negin Dolatraftarhaghi	Civil Engineering	Iran
UCL	Altnay Sadibekova	English	Kazakhstan
Warwick	Kriztee Fu	Accounting and Finance	Malaysia
Warwick	Le An Ha Vo Le	Economics	Vietnam



### Adam from Malaysia

Adam joined MPW from Malaysia for 18-month A level courses in Chemistry, Mathematics and Physics. He achieved grades A\*AA and won a place to read Chemical Engineering at University College London. Adam says:

“

I knew I wanted to come to the UK for my A levels and I chose MPW because of its location. Before MPW I was at a boarding school where everything was very strict and scheduled. I learn much better when I am managing my own time and so I really like the free periods at MPW that you can use for self-study. The teachers here have really helped ignite my passion for the subjects I am studying by teaching things outside of the syllabus, which has also helped with my personal statement. MPW has provided a great exposure to a new culture. I think the system here is better than the Malaysian education system: the class sizes are much smaller and the schedules are better managed. I was nervous about coming at first but now I am really happy and I have made friends through my lessons and through where I live.

”



### Amanda from Singapore

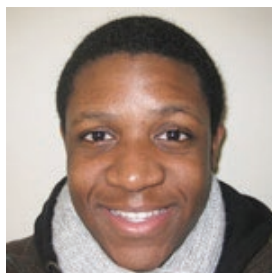
Amanda joined MPW from Singapore for 18-month A level courses in Biology, History and Mathematics. She achieved grades A\*AA and won a place to read Psychology at University College London. Amanda says:

“

The learning environment at MPW is better than most of my previous school and the classes are very individualised. MPW take the stress out of learning and are always supportive, for example they organised individual Biology lessons for me at first to kick start my programme as I was doing the A level in only 18 months. The teachers work hard to make sure you really understand and are keeping up. Although frequent testing was daunting at first, it really helps you to stay on track and makes you really prepared for the real exams.

”





### Peter from Nigeria

Peter originally joined MPW from Harrow School for our one-year GCSE course and achieved A\*A\*A\*A\*A\*AAA

before his family relocated to South Africa where Peter studied at the African Leadership Academy. Peter subsequently returned to MPW this year to complete his A-Levels and achieved his ambition of a place to study Japanese Studies at the University of Manchester. Peter says:

“

I chose MPW because I knew of its amazing reputation of producing students with fantastic grades. I am grateful that I was able to fall in line with its reputation. The teachers that I have had have all been absolutely fantastic. They all know exactly what is necessary not only to excel in the exam, but also to have a real understanding. I honestly believe that any student, international or otherwise, should choose MPW because it not only gives you a great stepping stone into the UK universities, but it also provides you with a productive and lively experience of education in London. My favourite thing about MPW is its location. London is seen as one of the greatest cities in the world to live in, and choosing MPW will allow you to live in London, whilst receiving the best secondary education available.

”



### Anna from Poland

Completely new to UK A levels, Anna has greatly enjoyed her studies at MPW Cambridge.

Having achieved A level grades of AAA in Chemistry, Biology and Maths, Anna is now progressing to study Genetics at KCL. Comparing her studies in Poland and MPW Cambridge Anna shares her experience:

“

I must admit that at first I was a little worried. My main concern was not only the language barrier, but also how to cope with the new environment and teaching methods. Just the first few days at MPW were enough to convince me that this is the best learning environment that can ever be provided for a student. There is nothing more encouraging for my independent learning than my teachers' involvement and attention they pay for each individual student in class. In my previous school in Poland I have never been the strongest student, but always an average one. At MPW I was able to achieve the best grades I possibly could and secure a place at my firm choice.

”

## The Admissions Procedure

1. Complete application form and return with supporting documentation, below:
  - Copy of passport and previous UK visa(s)
  - Copy of any English language qualifications
  - Copies of previous school qualifications/ reports/transcripts
2. Attend an interview with senior a member of MPW staff and sit an entrance test if required.

During the interview we will offer expert and honest advice on programme/subject selection and making a competitive university application. A student may be required to sit an English or Maths test depending on their qualifications and the course they are applying for. An interview may take place at an MPW college, overseas when we are visiting your region or via Skype.
3. Receive a decision on the application (usually within one week).

If a place has been offered:

4. Complete and return registration form, consent form and registration fee (£300) to guarantee place.
5. Pay a deposit (to be refunded in the last term of study).
6. If the student requires a Tier 4 visa, a CAS will be issued once the deposit has been received (we are not able to issue a CAS more than 3 months before the course start date).

Please send all applications to your interviewer or [international@mpw.ac.uk](mailto:international@mpw.ac.uk)

## Visas and Immigration

MPW London, Birmingham and Cambridge are Tier 4 Sponsors able to issue Confirmation of Acceptance for Studies (CAS) for both Tier 4 Child and General visas.

If you require a visa to study in the UK, please ensure you provide all of the requested documents with your application so they can be assessed by the International Admissions Officer. If anything is missing, we will contact you to request the information.

In order to ensure you have the best support in your home country when it comes to completing a visa application, we strongly recommend that you have an agent, consultant or solicitor that can help you. If you don't have someone to help you through the process and check you have the correct documents, please speak to your interviewer.

If you have any questions, please ask your interviewer to direct you to the International Admissions Officer who can give you advice on student immigration to the UK. For the most up to date information, please visit the UK Visas and Immigration website.

“

*A highly significant factor in the students' progress is their excellent attitude to work, to their tutors and to the college.*

”

—ISI Inspection Report

<b>Tuition Fees (per year)</b>	<b>MPW London</b>	<b>MPW Birmingham</b>	<b>MPW Cambridge</b>
A levels (2 year course)	£28,335	£20,064	£22,788
A levels (1 year course)	£29,700	£21,150	£26,715
GCSE (2 year course)	£27,375	£20,064	£21,576
GCSE (1 year course)	£28,950	£20,064	£21,576
Foundation Programme	£19,698	£16,750	£19,698
Pre-Foundation in Art	£23,160	-	-

### Additional Fees (per term)

Additional IELTS	£1,850	£1,500	£1,750
18 month A level	£9,445	£6,688	£7,596
Pre-A level	£9,445	-	-
Registration fee	£300	£300	£300
Deposit	£9,000	£8,000	£8,000

*\*Deposits are used for the final fee instalment and the balance refunded.*

*\*\*EU nationals will pay 50% of the deposit fee stated. \*\*\*IFP students will pay £3,000 deposit.*

### Other Courses (per week, including accommodation )

Summer Schools (all inclusive)	£1,325	-	£1,325
Pre-sessional English	from £700	-	from £600

### Accommodation Fees (per week)

MPW student residence (including breakfast, linen, 24/7 supervision)*	£424 (£18,250 per year)	£244 (£10,500 per year)	£280 (£12,075 per year)
Other student halls (over 18 years old)	£250-600	£180-250	£230-280
Home stay	£300-350	£130-200	£190-250

*\*Arranged by KSS, a wholly owned subsidiary of MPW Ltd.*

*Accommodation figures correct at time of print, please contact the college for a specific quote.*





Schools and Colleges

LONDON **+44 (0)20 7835 1355**

90-92 Queen's Gate  
London SW7 5AB

CAMBRIDGE **+44 (0)1223 350158**

3-4 Brookside  
Cambridge CB2 1JE

BIRMINGHAM **+44 (0)121 454 9637**

17-18 Greenfield Crescent  
Birmingham B15 3AU

**international@mpw.ac.uk**

**www.mpw.ac.uk**