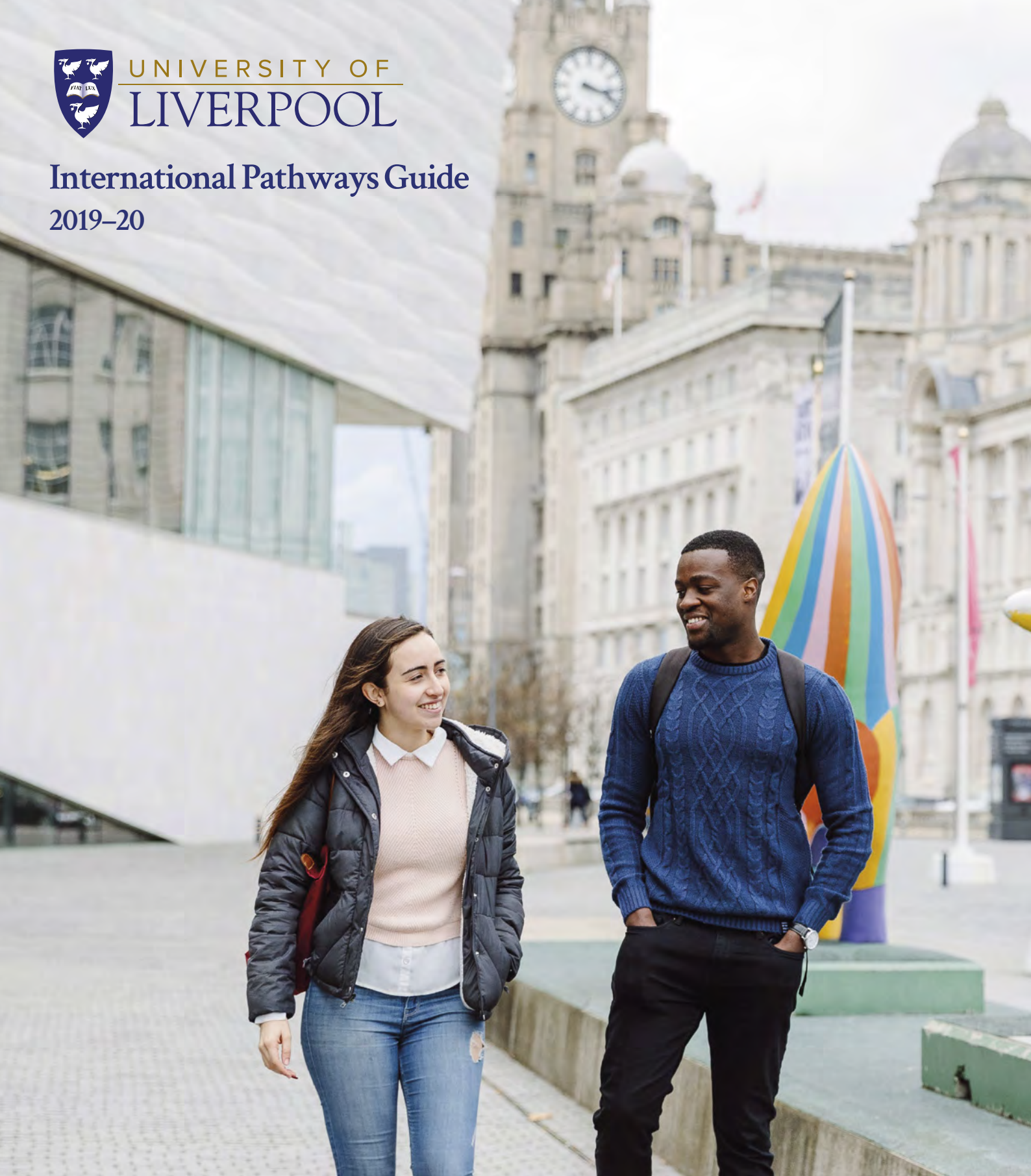




UNIVERSITY OF  
LIVERPOOL

## International Pathways Guide 2019–20



Follow your path, your way

**KAPLAN** INTERNATIONAL  
PATHWAYS

Follow your path to a member of the prestigious Russell Group, the University of Liverpool, which boasts an excellent global reputation for research and learning. Through Kaplan, you can gain access to a Liverpool degree and achieve your future goals.



# Contents

## The University of Liverpool

Why choose the University of Liverpool?	04
Get to know:	
the University	06
the campus	08
Liverpool	10
the students	12
Global success	14

## Your path to University

Routes to Liverpool	18
International College	20
Teaching: learn your way	22
Support at every step	24
Accommodation: live your way	26
Off-campus study centre:	
Kaplan International College London	28

## Your path to an undergraduate degree

Undergraduate pathways	30
Choose your undergraduate degree	32
Foundation Certificate in Liverpool:	
Business, Law and Social Sciences	36
Science and Engineering	38
Undergraduate pathway course modules	40

## Your path to a postgraduate degree

Postgraduate pathways	42
Choose your postgraduate degree	44
On-campus Pre-Master's in Liverpool:	
Business, Economics and Finance	46
Law and Social Sciences	48
Science and Engineering	50
Off-campus Pre-Master's in London:	
Business, Law and Social Sciences	52
Postgraduate pathway course modules	54
Pre-Doctorate	56

## Start your path

How to apply	60
Your questions answered	61
Contact us	63

# Why choose the University of Liverpool?



*Russell Group  
member*

producing globally  
recognised research



*Top 16*

university in the UK  
Shanghai Ranking 2018



*£800 million*

invested in campus  
and facilities



*219,000*

alumni in  
170+ countries



*81%*

of research rated world leading or  
internationally excellent  
Research Excellence Framework 2014



*Top 20*

UK university for research power  
Times Higher Education interpretation of  
Research Excellence Framework 2014



*9 Nobel  
Prize winners*

associated with  
the University



*Silver*

award for teaching  
Teaching Excellence Framework 2018



*Top 25*

of UK universities most targeted  
by graduate employers  
High Fliers Research 2018

# Get to know the University

You can join a truly international community at the University of Liverpool. You'll benefit from state-of-the-art facilities and incredible learning opportunities, while experiencing life in one of the UK's most exciting cities.

## Learn from experts

Founded in 1881, the University of Liverpool is the original 'red-brick' university. It has a global reputation for excellent research and teaching, and is associated with 9 winners of the Nobel Prize. As a member of the Russell Group, the University is research led. Its academics and lecturers are experts in their fields, holding a wealth of impressive experience from both educational and professional backgrounds.

## Inspiring research

Research plays an important part in the University of Liverpool's appeal to students, and you could join this inspiring research powerhouse too. The University's researchers work on trying to find solutions to some of the most pressing challenges of our time, including fighting the Zika Virus, reducing carbon emissions and developing nanomedicines. In 2014, 81% of Liverpool's research output was rated as world leading or internationally excellent by the Research Excellence Framework.

## Global community

The University is home to a diverse student community, with more than 8,000 international students from over 130 countries. You'll make friends from all over the world and learn about different people and cultures. Liverpool's Student Administration and Support offers guidance and advice specifically designed for international students, so you'll receive support with visas, welfare issues and more.

## Investing in your future

Since 2011, Liverpool has invested £800 million in campus facilities in order to enhance your student experience. Its 10-year plan for development has already seen the opening of new science labs that are among the most technologically advanced in Europe. The University has also established worldwide partnerships, expanding its already impressive global network of students and teachers, giving you access to exciting overseas opportunities and experiences.



Exceptional science resources

Modern developments and facilities



*At the University of Liverpool, our vision is to be a connected, global university.*

*We welcome students from all over the world, and want to provide you with incredible learning opportunities and unforgettable life experiences.*

*This means that when the time comes for you to leave Liverpool, you will feel fully prepared to go out into the world and do great things. We look forward to welcoming you soon!*

**Professor Dame Janet Beer**  
Vice-Chancellor,  
University of Liverpool

## UK subject rankings

**14th**

Aeronautical and Manufacturing  
Engineering<sup>T</sup>

**1st**

Anatomy and Physiology<sup>G</sup>

**6th**

Animal Science<sup>T</sup>

**13th**

Business and Management  
(research impact)<sup>R</sup>

**6th**

Chemistry<sup>T</sup>

**12th**

Marketing<sup>C</sup>

**5th**

Physics<sup>G</sup>

**3rd**

Veterinary Science<sup>G</sup>

C – Guardian University Guide 2019

C – Complete University Guide 2019

R – Times Higher Education interpretation of  
Research Excellence Framework 2014

T – Times and Sunday Times Good University Guide 2019

Find out more at: [kaplanpathways.com/university-of-liverpool](https://kaplanpathways.com/university-of-liverpool)

# Get to know the campus

Located in Liverpool's Knowledge Quarter, just a 5-minute walk from the city centre, the University of Liverpool's campus has a vibrant atmosphere. With attractive green spaces, great architecture, and first-rate facilities and residences, you'll live and study in an inspiring environment.

## Learning

- 2 main libraries: Sydney Jones Library and Harold Cohen Library
- 24/7 access to the libraries, throughout the academic year
- 2 million books and 65,000 electronic journals
- Over 2,000 computers available across the campus
- Campus-wide, high-speed WiFi
- Dedicated study areas

## Sport

- 50+ student-led sports clubs
- 25-metre swimming pool
- State-of-the-art fitness centre
- 13 grass pitches; 2 synthetic hockey pitches
- 4 squash courts
- 2 sports halls
- Wide range of activities and sports for all levels of ability

## Living and social

- 200+ clubs and societies
- Day trips organised for students
- Monthly farmers' market
- 10 cafés, hundreds within walking distance
- Banks and shops on campus
- Outdoor green spaces, such as Abercromby Square and The Quadrangle



**Liverpool was voted  
number 1 in the UK  
for city life**

Whatuni Student Choice Awards 2018



50+ student-led sports clubs



State-of-the-art facilities



## The University of Liverpool in London

The University of Liverpool also offers a number of postgraduate degrees at its modern London campus. Located in the heart of the city's financial district, it's the perfect place for you to build professional connections as you study. The campus offers premium teaching and learning facilities, and you'll be part of a small, friendly community of students from all over the world.



# Get to know Liverpool

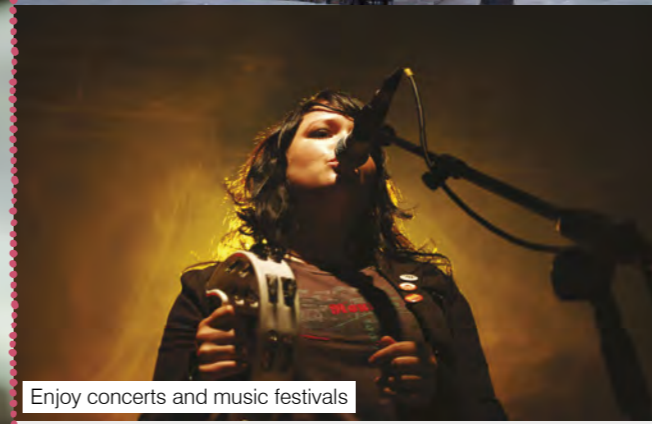
As a cultural hub in the north of England, Liverpool is a fashionable and welcoming city. With so much to offer, it's the perfect place for international students—you'll love it here!



Visit cultural sites and learn about The Beatles



See live shows and sporting events



Enjoy concerts and music festivals



Explore historic landmarks like the Liver Building

## Culture

Liverpool has a thriving arts scene. The city's many theatres host fantastic performances throughout the year, and there are more museums and galleries than in any other UK city outside of London. You can visit some of the modern spaces like Tate Liverpool, as well as galleries such as the Bluecoat. These are just some of the inspiring places that help to make Liverpool incredibly dynamic, modern and cultural.

## Football

Football is a part of Liverpool's identity. Two rival Premier League football clubs, Liverpool FC and Everton FC, call the city home. There's nothing quite like the excitement of watching these famous teams compete, so why not go to see a local match? According to research from ESPN, Liverpool was also ranked as the UK's Greatest Sporting City in 2017.

## History

Wherever you go in Liverpool, you are surrounded by history. Beyond the lovely waterfront (a UNESCO World Heritage site), you can explore 800 years of the city's past. Protected historic areas, such as the Albert Dock, can be found across the city. Thanks to Liverpool's reputation as an important trading port, the city has been welcoming people from around the world for centuries!

## Music

As a UNESCO World City of Music, Liverpool has a rich musical background. In fact, the city hosts a number of festivals like the Liverpool International Music Festival and Liverpool Sound City. The Royal Liverpool Philharmonic Orchestra gives around 70 concerts every year. And, of course, the city is the birthplace of The Beatles—be sure to visit the Cavern Club to see where their story began.

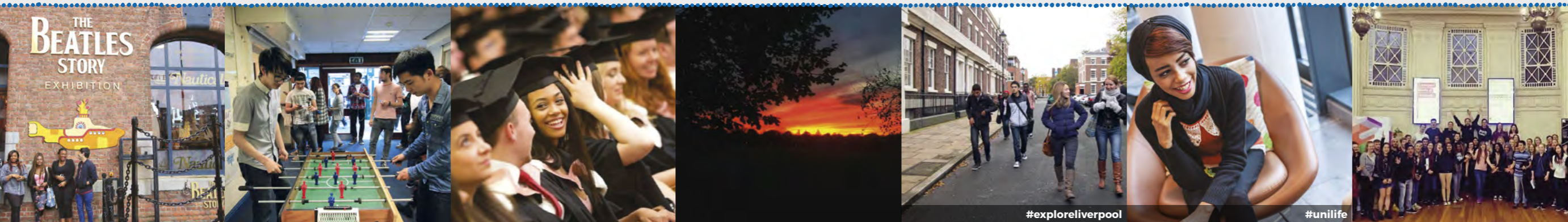
### Top 5 things to do in Liverpool

- Take a musical journey at The Beatles Story
- Watch Premier League football at Anfield
- Visit the stunning Liverpool Central Library
- Discover the city's many bars and clubs
- Explore the amazing Liverpool Cathedral

Discover more about life in Liverpool: [kaplanpathways.com/liverpool-life](https://kaplanpathways.com/liverpool-life)

# Get to know *the students*

See more online  
Search '@LICliverpool'



#exploreliverpool

#unilife

*Late nights with other students are some of my favourite memories from Liverpool. We used to stay up with coffees, discussions and fun!*

**Ashwin**  
from India  
MBA



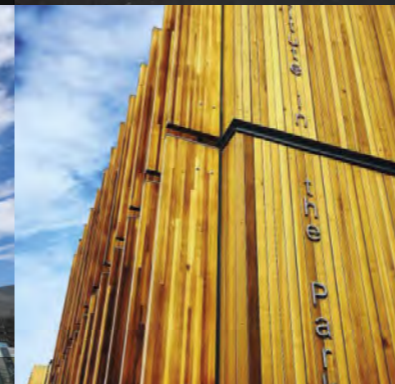
*There is so much I like about Liverpool, so to pick what I like the most is challenging!*

*I really like the independent restaurants and cafés around the city, and I love how vibrant the area is. There is always something going on: live music, musicals, ballet, art exhibits, festivals, and more. With so much to do, there is never a boring moment!*

**Anniken from Norway**  
BSc (Hons) Psychology



#universityofliverpool



#loveliverpool #uol

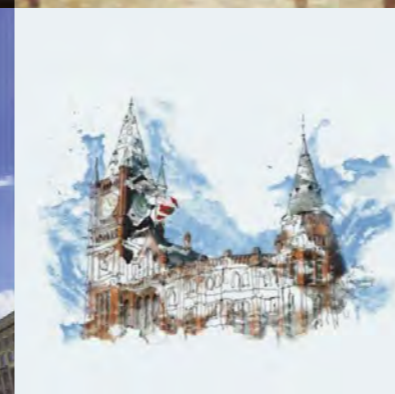
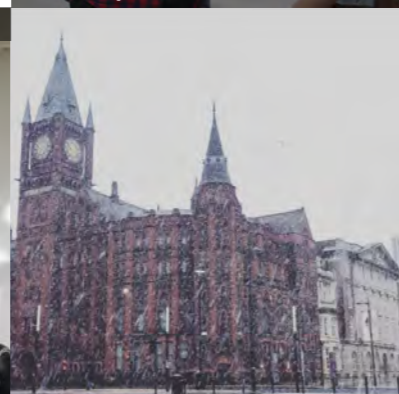


*It was the best 3 years of my life! The things I got to do and the time I spent with my friends were the best. Liverpool is not just a city, it's a whole exciting experience!*

**Ahmed**  
from Egypt  
BA (Hons) Marketing



#friendsforlife



# Global Success

The University of Liverpool's international reputation means that your degree can impress employers around the world.



*My tutors at the University of Liverpool were professionals, so they combined their industry work with teaching. My degree gave me key professional knowledge, and showed me how to think from an entrepreneurial point of view.*

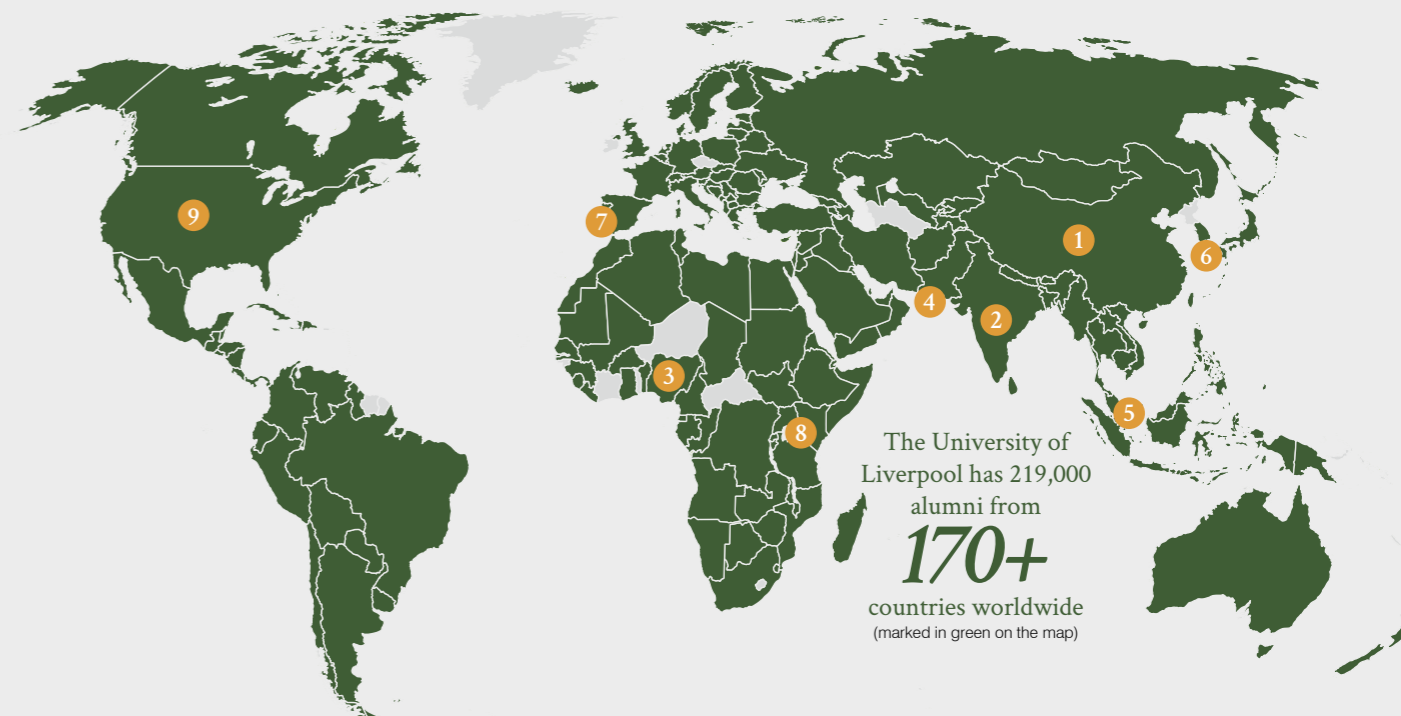
#### Amit from India

Master's degree graduate and founder of PlusONE Initiative, a social project which promotes environmental protection among children in India.



#### Join the University of Liverpool's notable alumni

Many international students at the University of Liverpool have gone on to achieve great things, and so can you. Your degree could take you anywhere!



#### 1 China

**Dr Tung Chee-hwa**

First Chief Executive of Hong Kong

#### 2 India

**Professor Har Gobind Khorana**

Winner of Nobel Prize in Physiology or Medicine and renowned biochemist

#### 3 Nigeria

**Olufunmilola Ozoh**

Head of software development at Schulportals Technologies

#### 4 Pakistan

**Dr Mehmood Khan**

Chief Scientific Officer at PepsiCo

#### 5 Singapore

**Dr Ong Teng Cheong**

Fifth President of Singapore

#### 6 South Korea

**Hyung Wook 'Ben' Seo**

One of MBC's leading football commentators

#### 7 Spain

**Olimpia de la Rosa Vázquez**

Senior humanitarian health adviser for Save the Children

#### 8 Uganda

**Rose Aspondi**

Public health specialist at the Centres for Disease Control and Prevention

#### 9 USA

**Sean Gallitz**

Digital journalist for CBS News

#### Career support

Throughout your time at Liverpool, and for 5 years after you graduate, you'll have access to the University's award-winning Careers and Employability Team. Each department has its own specialist adviser, and the expert careers team offers a range of services, specifically designed for international students.

These include helpful workshops to help you develop your job search techniques, and presentations to help you understand your future career options. The Career Studio can provide you with face-to-face advice and access to useful resources and events to help you with your job search.

# *Your path to* **university**



# Routes to Liverpool

Through Kaplan, you can gain entry to a degree at the University of Liverpool. With a pathway course, you'll build the knowledge, skills and confidence you need to feel fully prepared for your degree, and to succeed in the future.

## What is a pathway course?

If you've completed high school, but are not quite eligible for direct entry to an undergraduate degree at the University of Liverpool, you can gain a place via a pathway course. Or, if your undergraduate degree doesn't allow you to go directly to a postgraduate degree, a pathway course can help you qualify.

You will usually take a pathway course at Liverpool International College (LIC), on the University of Liverpool campus. Your course will give you the subject knowledge, academic and English skills to be ready for your degree. See to the right for more details.

## Guaranteed entry

You will be guaranteed entry to your University of Liverpool degree, if you pass your Foundation Certificate or Pre-Master's course at the required level and with good attendance.

For details of progression from the Pre-Doctorate course, see page 56.

## On-campus courses

### Foundation Certificate

A Foundation Certificate at LIC will help you qualify for entry to an undergraduate degree. You will improve your English language, subject knowledge, and feel fully prepared for university. Once you have completed your course, you can then progress to Year 1 of your undergraduate degree.

### Pre-Master's

If you have 3 years of higher education or equivalent from your home country, but don't qualify for entry to a postgraduate degree, you can study an LIC Pre-Master's. This will raise your knowledge and skills to the level needed for entry to a postgraduate degree at the University of Liverpool.

## Off-campus courses

### Pre-Master's in London

If your postgraduate degree is taught at the University of Liverpool's London campus, you can study your Pre-Master's at Kaplan International College (KIC) London, in the heart of the UK's capital city, and close to the University's London campus.

### Pre-Doctorate in London

If you wish to study a doctorate at the University of Liverpool and already have a master's degree or a good honours degree, you can prepare for your studies with a Pre-Doctorate at KIC London. This will help you develop ideas for your research proposal and apply for a doctoral degree.

## Find your route

### Foundation Certificate

Prepare for your undergraduate degree

English language entry level:  
minimum UKVI IELTS 4.0  
in all skills

Tuition fees: from £16,430

Course length: 5 to 15 months

Study location: Liverpool

Subjects and more details: page 30

### Pre-Master's

Prepare for your postgraduate degree

English language entry level:  
minimum UKVI IELTS 4.5 with  
no less than 4.0 in any skill

Tuition fees: from £16,620

Course length: 5 to 15 months

Study location: Liverpool or London

Subjects and more details: page 42

### Pre-Doctorate

Prepare for your doctoral degree

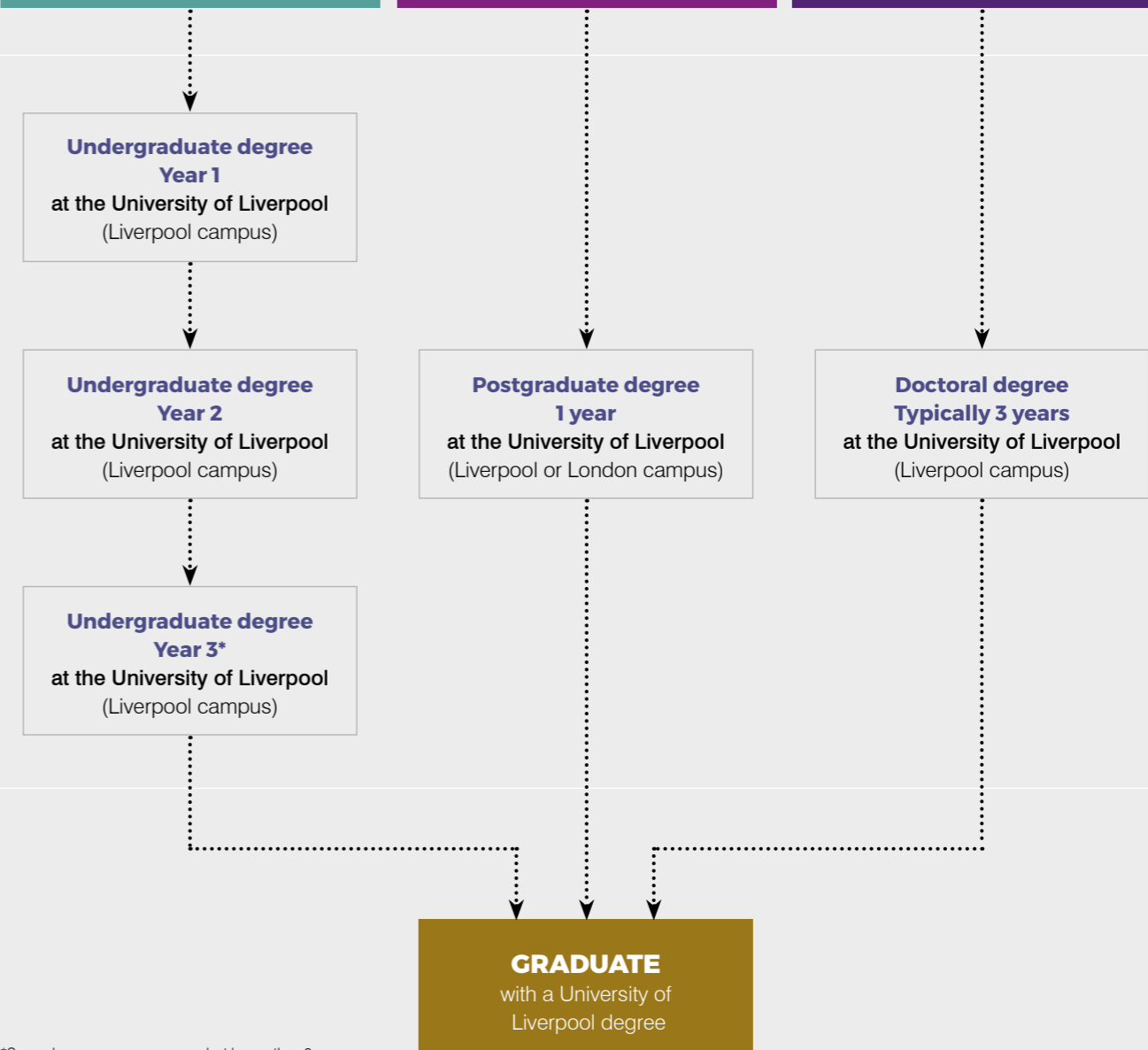
English language entry level:  
minimum UKVI IELTS 5.5 with  
no less than 5.0 in any skill

Tuition fees: from £4,685

Course length: 3 to 9 months

Study location: London

More details: page 56



\*Some degree programmes may last longer than 3 years

Watch our video explaining pathway courses: [kpln.org/pathway-course-info](https://kpln.org/pathway-course-info)

# International College

Liverpool International College (LIC) offers pathway courses to help you get ready for your degree studies at the University of Liverpool.

## Achieve your goals

Liverpool International College has welcomed students from around the world for over 10 years. Its staff will work hard to make sure you really get to experience student life in Liverpool. They will do everything they can to help you achieve your goals, and ensure you're ready for your future. You'll gain the knowledge and skills you need to succeed on your degree.

## Experience university life

From your very first day at the College, you will have access to the University's impressive resources. You can use the libraries, sports centres and even the Guild of Students, with its wide range of clubs and societies. You'll feel like a University student from your first day as you enjoy campus life and get to know your new home.

## Enjoy dedicated support

You'll study an expertly designed course, with teachers who have experience in both professional and academic fields. At the College, you'll receive all of the support you need to feel confident about gaining entry to your degree. Small class sizes and regular one-to-one tutorials and assessments, combined with your hard work, will put you in a great position to progress to the University of Liverpool.

## Join in the fun

It's important that you enjoy your time in Liverpool when you're not studying, and LIC staff want to make sure that you have the best possible experience. That's why the College organises a full calendar of social events. From day trips to sports tournaments, there are lots of fun activities to take part in, giving you the chance to explore and make friends.

See more of LIC online: [kaplanpathways.com/liverpool](https://kaplanpathways.com/liverpool)



The College welcomed students of  
**48**  
nationalities in 2018



Benefit from small class sizes



Join a diverse student community

*It's incredible to think we've been helping international students change their lives for over 10 years. I find it so rewarding to see students like you go on to success—not just at Liverpool International College, but in their University of Liverpool degrees and future careers too.*

**Leelee Yates**  
Director of Liverpool International College



*The most rewarding thing for me is the chance to build confidence in students from so many backgrounds.*

*I really enjoy discovering new learning styles to share with you, and exploring different ways to teach and engage with my students.*

**Joanne Jackson**  
Curriculum Manager  
at Liverpool International College

# Learn your way



The International College has truly inspiring teachers, who are so important for your learning experience, and who will support you on your path to university. With their help, you can succeed on your university degree and beyond.

## Learn from experts

You'll learn from highly qualified teachers at LIC, who have incredible expertise and experience from both professional and academic backgrounds. They work hard to give you excellent advice and guidance about how you can succeed in the future. As specialists in teaching international students, they know exactly how to ensure you achieve the academic and English language standards required by the University of Liverpool.

## Supportive environment

Your confidence will grow every day thanks to small class sizes and strong relationships with your teachers and classmates. You'll also receive support in preparing for life after university, with help in creating a CV, portfolio and other items that will be useful when you want to start a career.

## Individual attention

You'll have frequent meetings with your tutor, where you can ask any questions you have, while carefully timed assessments will really help you track your progress towards your degree. We'll send reports on your attendance, plus how you're settling in and progressing, to your agent, parents and, where applicable, your sponsor and / or guardian, so they can help you work towards your goals.

## Personalised learning

Usually you will be able to choose some of your course modules based on your university degree. You can also typically customise your project topics based on your interests and career aspirations, helping to make your course as relevant to your personal ambitions as possible.

? Watch our video with tips from teachers: [kpln.org/teachers-tips](https://kpln.org/teachers-tips)

# Support

*at every step*

Studying abroad is a life-changing experience. We understand that this is a big decision, and we will support you throughout your time in the UK. This means you can focus on achieving your best and fulfilling your goals.



## Before you arrive

Our support starts before you even leave home. We will send a handy pre-arrival guide with details about your study destination. We will give you guidance on the visa process, and if you're under 18, we can arrange the legal guardian that you'll need during your studies for your wellbeing.



## After you arrive

When you arrive in the UK, we'll make sure that you're comfortable and have everything you need. With our airport transfer services, there will be a friendly face to meet you off the plane, and you can arrive at your new home easily and without stress. We want you to have a great start to your experience in the UK!



## Welcome Week

Before your LIC classes begin, there is Welcome Week. This involves fun social activities and events, which will help you to get used to your new environment, and to get to know other students and College staff. We'll also help you with tasks like registering with a doctor and setting up a bank account.



## On-going support

We will continue to give you support throughout your studies. The College's staff are there to help, and they will be happy to answer any of your questions. We'll also organise events, trips and social activities, so that your student experience is as rewarding as possible.



## Progressing to university

After your pathway course, we will help you with your next step: progressing to your university degree. We'll advise you on how to extend or renew your visa, and if you need help exploring other study options, we can guide you.

## Have fun while you study

The College organises lots of fun activities and trips for you to enjoy. These are a great way to try new things and make new friends!

Some examples include:

- food nights
- football matches
- karaoke
- sporting tournaments
- trips to local attractions and other parts of the UK
- visits to museums and galleries

? Learn more and watch videos about student support services: [kaplanpathways.com/liverpool-support](https://kaplanpathways.com/liverpool-support)

# Live your way

You'll want to be in a place that feels like home while you're studying at the College. In our brand-new student residence, you'll be close to your classes, the University campus and the city centre, with shops, restaurants and cafés nearby.

## Kaplan Living in Liverpool

While you're studying at Liverpool International College, you can benefit from staying in a newly opened residence: Kaplan Living. This specially designed facility is ideal for international students, with social areas to help you relax and make new friends, and an on-site coffee shop. You'll have all the amenities you need to live in comfort and security during your course.

## A perfect location

Kaplan Living enjoys a superb location in the heart of Liverpool. Many rooms have great views across the city, and you're only a short walk from shopping areas and cultural hotspots. With many of the city's wonderful attractions close by, you'll never get bored! The residence, the International College and the University of Liverpool itself are all in the same location, making student life as convenient as possible.

## What's included?

- Your own private bedroom
- Private bathroom facilities
- All electricity and water bills
- Internet and WiFi
- Shared or private kitchen and dining area
- Access to laundry room (usage charges apply)
- Student starter pack that includes bedding, cooking equipment and other essentials

## Room options

### Classic

These rooms feature a private bathroom and shared kitchen, and are furnished with a comfortable bed, a desk and chair for studying, plus built-in storage.

### Studio

A studio is a larger room with all the features of a Classic room, as well as its own self-contained kitchen.

## Example accommodation prices

Prices depend on your course length and housing choice.

Intake	Course/contract length*	Guide prices*
Autumn 2019	2 terms (41 weeks)	£7,425-£9,270
	3 terms (50 weeks)	£9,000-£11,250
Spring 2020	2 terms (27-34 weeks)	£4,975-£7,824

\* Pricing and contract lengths shown are examples only. Confirmed pricing and contracts for each intake will be available on our website once the relevant booking period opens.

## How to book

You can apply for accommodation at the same time that you apply for your pathway course.

- 1) Indicate on the College application form that you need accommodation.
- 2) After receiving your study offer, you can book your accommodation by completing the online form and paying the holding fee (typically £1,000) when you accept your offer.
- 3) You'll then receive your accommodation agreement. Read, sign and return this to reserve your room.

Find out more about accommodation in Liverpool: [kaplanpathways.com/liverpool/accommodation](https://kaplanpathways.com/liverpool/accommodation)



Socialise and meet new friends

Artist's visualisation of how Kaplan Living may look



## Guaranteed accommodation

You're guaranteed housing during your pathway course at Liverpool International College.†

† On the condition that you pay your tuition deposit, accept your study offer and submit the accommodation booking form before the accommodation guarantee deadline date.

# Kaplan International College London

You can also gain entry to University of Liverpool postgraduate degrees via a pathway course at Kaplan International College (KIC) London. You'll be prepared to start your master's or doctoral degree at one of the University's campuses.

## Modern learning

KIC London has recently undergone a total refurbishment, and now features brand-new facilities. The building offers you cutting-edge learning resources, including modern computer facilities, group study spaces and WiFi access throughout the building. KIC London is also home to expert tutors with lots of experience teaching international students like you, so you will receive all of the academic support you need to be ready for your degree.

## Feel at home

While you study in London, you'll want a place you can call home, and that's exactly what we provide. You can stay in a secure and comfortable student residence, perfect for enjoying your life in London. You can choose from a variety of accommodation options to suit your requirements. You will have your own private bedroom and live among other international students. You'll also have access to social areas and study spaces, which are great for spending time with your new friends.

## Live in London

While you're at KIC London, you'll live and study in the UK's exciting capital city. With fantastic shopping and attractions, as well as a vibrant, multicultural society, London is a great place to be a student. You can experience one of the world's best cities, then stay in London for your postgraduate degree at the University of Liverpool's London campus, or progress to your doctoral degree in the beautiful city of Liverpool.

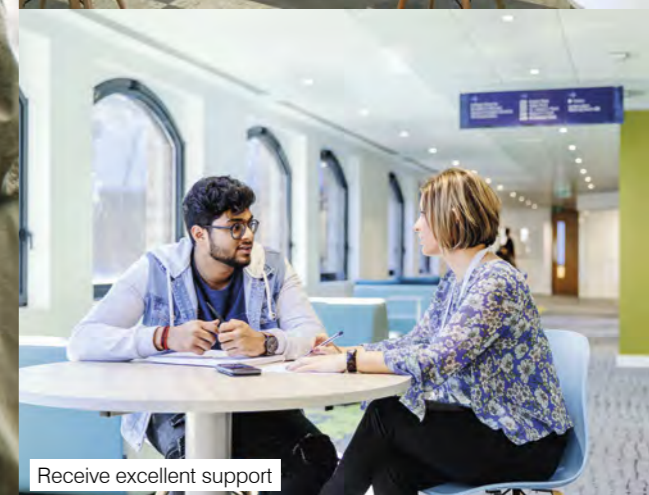
See more of KIC London online: [kaplanpathways.com/london](https://kaplanpathways.com/london)



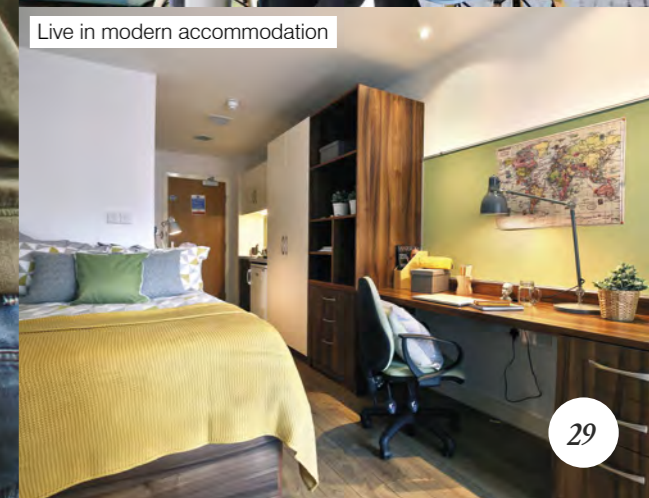
Experience life in the UK's exciting capital



Study at the recently refurbished College building



Receive excellent support



Live in modern accommodation

# Undergraduate pathways

A Foundation Certificate is your ideal route to an undergraduate degree at the University of Liverpool. The one that's best for you will depend on your academic qualifications, English language level and subject preference.

## Foundation Certificate

For entry to the 1st year of an undergraduate degree.  
Offered for the following subject areas:

Business, Law and Social Sciences.....	page 36
Science and Engineering.....	page 38

## What's the right path for me?

Turn to page 32 to find the undergraduate degree you want, and to see which pathway course or courses lead there.



## Your path, your way: a course to fit your needs

- Your Foundation Certificate will have a combination of modules that's designed to fit with your degree and career aspirations. This means that your course is matched to your unique goals.
- Some of these modules will be taken by you and all other students on your course. This gives you a solid base of common study skills that you'll need at university.
- In many cases, you can also customise your pathway course by choosing some or all additional modules from a selection, and / or by completing 1 or more pieces of work based on your interests and degree subject.
- During your Foundation Certificate, you'll have frequent assessments to check that you're on track to progress to your University of Liverpool degree.

## Guaranteed entry

You will be guaranteed entry to your University of Liverpool undergraduate degree, if you pass your Foundation Certificate at the required level with good attendance.

*I decided to study in the UK because it is so multicultural. Back home you only find 3 or 4 nationalities, but here there are so many! My Kaplan course has really helped me with my studies in all sorts of ways, and my teachers are so inspiring and helpful.*

**Mohammed from Saudi Arabia**

Followed his path from a Foundation Certificate to BSc (Hons) Biological and Medical Sciences

Choose your undergraduate degree

Key to pathway courses

- B** Foundation Certificate for Business, Law and Social Sciences (page 36)
- S** Foundation Certificate for Science and Engineering (page 38)

Arts and Humanities

BA (Hons) Ancient History	B
BA (Hons) Ancient History and Archaeology*	B
BA (Hons) Archaeology	B
BSc (Hons) Archaeology	S
BA (Hons) Archaeology of Ancient Civilisations	B
BA (Hons) Architecture	B
BA (Hons) Chinese Studies and Ancient History*	B
BA (Hons) Chinese Studies and Archaeology*	B
BA (Hons) Chinese Studies and Classical Studies*	B
BA (Hons) Chinese Studies and Classics*	B
BA (Hons) Chinese Studies and Communication & Media*	B
BA (Hons) Chinese Studies and Criminology*	B
BA (Hons) Chinese Studies and Egyptology*	B
BA (Hons) Chinese Studies and Film Studies*	B
BA (Hons) Chinese Studies and French*	B
BA (Hons) Chinese Studies and German*	B
BA (Hons) Chinese Studies and Hispanic Studies*	B
BA (Hons) Chinese Studies and International Politics & Policy*	B
BA (Hons) Chinese Studies and Irish Studies*	B
BA (Hons) Chinese Studies and Italian Studies*	B
BA (Hons) Chinese Studies and Law*	B
BA (Hons) Chinese Studies and Music*	B
BA (Hons) Chinese Studies and Music Technology*	B
BA (Hons) Chinese Studies and Philosophy*	B
BA (Hons) Chinese Studies and Politics*	B
BA (Hons) Chinese Studies and Popular Music*	B
BA (Hons) Chinese Studies and Social Policy*	B
BA (Hons) Chinese Studies and Sociology*	B
BA (Hons) Classical Studies	B
BA (Hons) Egyptology and Criminology*	B
BA (Hons) French	B
BA (Hons) French and Ancient History*	B
BA (Hons) French and Archaeology*	B
BA (Hons) French and Classical Studies*	B
BA (Hons) French and Classics*	B
BA (Hons) French and Communication & Media*	B
BA (Hons) French and Criminology*	B
BA (Hons) French and Egyptology*	B
BA (Hons) French and Film Studies*	B
BA (Hons) French and German*	B
BA (Hons) French and Hispanic Studies*	B

BA (Hons) French and Italian*	B
BA (Hons) German	B
BA (Hons) German and Ancient History*	B
BA (Hons) German and Archaeology*	B
BA (Hons) German and Classical Studies*	B
BA (Hons) German and Classics*	B
BA (Hons) German and Communication & Media*	B
BA (Hons) German and Criminology*	B
BA (Hons) German and Egyptology*	B
BA (Hons) German and Film Studies*	B
BA (Hons) German and Hispanic Studies*	B
BA (Hons) German and Italian*	B
BA (Hons) Hispanic Studies	B
BA (Hons) Hispanic Studies and Ancient History*	B
BA (Hons) Hispanic Studies and Archaeology*	B
BA (Hons) Hispanic Studies and Classical Studies*	B
BA (Hons) Hispanic Studies and Classics*	B
BA (Hons) Hispanic Studies and Communication & Media*	B
BA (Hons) Hispanic Studies and Criminology*	B
BA (Hons) Hispanic Studies and Egyptology*	B
BA (Hons) Hispanic Studies and Film Studies*	B
BA (Hons) Hispanic Studies and Italian*	B
BA (Hons) Irish Studies	B
BA (Hons) Irish Studies and Ancient History*	B
BA (Hons) Irish Studies and Archaeology*	B
BA (Hons) Irish Studies and Classical Studies*	B
BA (Hons) Irish Studies and Classics*	B
BA (Hons) Irish Studies and Communication & Media*	B
BA (Hons) Irish Studies and Criminology*	B
BA (Hons) Irish Studies and Egyptology*	B
BA (Hons) Irish Studies and Film Studies	B
BA (Hons) Irish Studies and French*	B
BA (Hons) Irish Studies and German*	B
BA (Hons) Irish Studies and Hispanic Studies*	B
BA (Hons) Irish Studies and International Politics & Policy*	B
BA (Hons) Irish Studies and Politics*	B
BA (Hons) Italian	B
BA (Hons) Italian and Ancient History*	B
BA (Hons) Italian and Archaeology*	B
BA (Hons) Italian and Classical Studies*	B
BA (Hons) Italian and Classics*	B
BA (Hons) Italian and Criminology*	B

BA (Hons) Italian and Egyptology*	B
BA (Hons) Italian and Film Studies*	B
BA (Hons) Italian and Hispanic Studies*	B
BA (Hons) Italian and International Politics & Policy*	B
BA (Hons) Italian and Irish Studies*	B
BA (Hons) Modern Language Studies	B
BA (Hons) Music	B
BA (Hons) Music and Ancient History*	B
BA (Hons) Music and Archaeology*	B
BA (Hons) Music and Classical Studies*	B
BA (Hons) Music and Classics*	B
BA (Hons) Music and Communication & Media*	B
BA (Hons) Music and Criminology*	B
BA (Hons) Music and Egyptology*	B
BA (Hons) Music and Film Studies*	B
BA (Hons) Music and Game Design Studies	B
BA (Hons) Music and German*	B
BA (Hons) Music and Hispanic Studies*	B
BA (Hons) Music and International Politics and Policy*	B
BA (Hons) Music and Irish Studies*	B
BA (Hons) Music and Italian*	B
BA (Hons) Music and Law*	B
BA (Hons) Music and Popular Music*	B
BA (Hons) Philosophy	B
BA (Hons) Philosophy and Ancient History*	B
BA (Hons) Philosophy and Archaeology*	B
BA (Hons) Philosophy and Classical Studies*	B
BA (Hons) Philosophy and Classics*	B
BA (Hons) Philosophy and Communication & Media*	B
BA (Hons) Philosophy and Criminology*	B
BA (Hons) Philosophy and Egyptology*	B
BA (Hons) Philosophy and Film Studies*	B
BA (Hons) Philosophy and French*	B
BA (Hons) Philosophy and Game Design Studies	B
BA (Hons) Philosophy and German*	B
BA (Hons) Philosophy and Hispanic Studies*	B
BA (Hons) Philosophy and Irish Studies*	B
BA (Hons) Philosophy and Italian*	B
BA (Hons) Philosophy and Music*	B
BA (Hons) Philosophy and Politics*	B
BA (Hons) Popular Music	B
BA (Hons) Popular Music and Ancient History*	B
BA (Hons) Popular Music and Archaeology*	B
BA (Hons) Popular Music and Classical Studies*	B
BA (Hons) Popular Music and Classics*	B
BA (Hons) Popular Music and Criminology*	B
BA (Hons) Popular Music and Egyptology*	B
BA (Hons) Popular Music and Film Studies*	B
BA (Hons) Popular Music and French*	B
BA (Hons) Popular Music and Game Design Studies	B
BA (Hons) Popular Music and German*	B

BA (Hons) Popular Music and International Politics and Policy*	B
BA (Hons) Popular Music and Irish Studies*	B
BA (Hons) Popular Music and Law*	B
BA (Hons) Popular Music and Philosophy*	B
BA (Hons) Popular Music and Politics*	B

Business

BA (Hons) Accounting and Finance	B
BA (Hons) Business Economics	B
BA (Hons) Business Management	B
BSc (Hons) Economics	B
BA (Hons) International Business	B
BA (Hons) Marketing	B

Computing

BSc (Hons) / MEng (Hons) Computer Science	S
BEng (Hons) / MEng (Hons) Computer Science and Electronic Engineering	S
BSc (Hons) Computer Science with Software Development	B S
BSc (Hons) Financial Computing	B S

Engineering

BEng (Hons) / MEng (Hons) Aerospace Engineering	S
BEng (Hons) / MEng (Hons) Aerospace Engineering with Pilot Studies	S
BEng (Hons) / MEng (Hons) Architectural Engineering	S
BEng (Hons) / MEng (Hons) Avionic Systems	S
MEng (Hons) Civil and Structural Engineering	S
BEng (Hons) / MEng (Hons) Civil Engineering	S
BEng (Hons) / MEng (Hons) Electrical and Electronic Engineering	S
BEng (Hons) / MEng (Hons) Engineering	S
BEng (Hons) / MEng (Hons) Industrial Design	S
BEng (Hons) / MEng (Hons) Mechanical Engineering	S
BEng / MEng (Hons) Mechatronics and Robotic Systems	S

Law

LLB (Hons) Law	B
LLB (Hons) Law with Accounting and Finance	B
BA (Hons) Law and Ancient History*	B
BA (Hons) Law and Classical Studies*	B
BA (Hons) Law and Classics*	B
BA (Hons) Law and Communication & Media*	B
BA (Hons) Law and Criminology*	B
BA (Hons) Law and Film Studies*	B
BA (Hons) Law and French*	B
BA (Hons) Law and German*	B
BA (Hons) Law and Hispanic Studies*	B
BA (Hons) Law and International Politics & Policy*	B
BA (Hons) Law and Italian*	B
BA (Hons) Law and Philosophy*	B

\* Available as an Honours Select 50:50 combination, allowing you to design your own degree.

Degrees continue on the next page >

Choose your undergraduate degree
(continued)

Key to pathway courses

- B Foundation Certificate for Business, Law and Social Sciences (page 36)
- S Foundation Certificate for Science and Engineering (page 38)

Mathematics

BSc (Hons) Actuarial Mathematics	B
BSc (Hons) / MMath Mathematics	S
BSc (Joint Hons) Mathematics and Business	B
BSc (Joint Hons) Mathematics and Computer Science	S
BSc (Joint Hons) Mathematics and Economics	B
BA (Joint Hons) Mathematics and Philosophy	B
BSc (Hons) Mathematics and Statistics	B
BSc (Hons) Mathematics with Finance	B
BSc (Hons) Mathematics with Ocean and Climate Sciences	S

Media

BA (Hons) Communication and Media	B
BA (Hons) Communication & Media and Ancient History*	B
BA (Hons) Communication & Media and Archaeology*	B
BA (Hons) Communication & Media and Classical Studies*	B
BA (Hons) Communication & Media and Classics*	B
BA (Hons) Communication & Media and Game Design Studies	B
BA (Hons) Communication, Media and Popular Music*	B
BA (Hons) Communication Studies and Italian	B
BA (Hons) Film Studies and Ancient History*	B
BA (Hons) Film Studies and Classical Studies*	B
BA (Hons) Film Studies and Classics*	B
BA (Hons) Film Studies and Communication & Media*	B
BA (Hons) Film Studies and Egyptology*	B
BA (Hons) Music and Technology	B
BA (Hons) Music Technology and Ancient History	B
BA (Hons) Music Technology and Archaeology	B
BA (Hons) Music Technology and Classical Studies	B
BA (Hons) Music Technology and Classics	B
BA (Hons) Music Technology and Criminology	B
BA (Hons) Music Technology and Egyptology	B
BA (Hons) Music Technology and Film Studies	B
BA (Hons) Music Technology and French*	B
BA (Hons) Music Technology and Game Design Studies	B
BA (Hons) Music Technology and German*	B
BA (Hons) Music Technology and Hispanic Studies*	B
BA (Hons) Music Technology and International Politics & Policy*	B
BA (Hons) Music Technology and Irish Studies	B
BA (Hons) Music Technology and Italian*	B
BA (Hons) Music Technology and Law	B

BA (Hons) Music Technology and Philosophy*	B
BA (Hons) Music Technology and Politics*	B
BA (Hons) Music Technology and Social Policy	B
BA (Hons) Music Technology and Sociology	B

Science

BSc (Hons) Anatomy and Human Biology	S
MPhys Astrophysics	S
BSc (Hons) Biochemistry	S
BSc (Hons) Biological and Medical Sciences	S
BSc (Hons) / MBiolSci Biological Sciences	S
BSc (Hons) Bioveterinary Science	S
BSc (Hons) / MChem Chemistry	S
BSc (Hons) Diagnostic Radiography†	S
BSc (Hons) Environmental Science	S
BSc (Hons) Evolutionary Anthropology	S
BSc (Hons) Genetics	S
BA (Hons) Geography	B
BSc (Hons) Geography	S
BSc (Hons) Geography and Oceanography	S
BA (Hons) Geography and Planning	B
BSc (Hons) / MESci (Hons) Geology	S
MESci (Hons) Geology and Geophysics	S
BSc (Hons) / MESci (Hons) Geology and Physical Geography	S
BSc (Hons) Geophysics (Geology)	S
BSc (Hons) Geophysics (Physics)	S
BSc (Hons) Human Physiology	S
BSc (Hons) / MMarBiol (Hons) Marine Biology	S
BSc (Hons) Marine Biology with Oceanography	S
MMath Mathematical Physics	S
BSc (Hons) Medicinal Chemistry	S
MChem Medicinal Chemistry with Pharmacology	S
BSc (Hons) Microbiology	S
BSc (Hons) Occupational Therapy†	S
BSc (Hons) / MOSci (Hons) Ocean Sciences	S
BSc (Hons) Orthoptics†	S
BSc (Hons) Pharmacology	S
BSc (Hons) / MPhys Physics	S
BSc (Joint Hons) Physics and Mathematics	S
BSc (Hons) Physics with Astronomy	S
BSc (Hons) Physics with Medical Applications	S

BSc (Hons) Physics with Nuclear Science	S
BSc (Hons) Physiotherapy†	S
BSc (Hons) Psychology	S
BSc (Hons) Radiotherapy†	S
MPhys Theoretical Physics	S
BSc (Hons) Tropical Disease Biology	S
BSc (Hons) Zoology	S

Social Science

BA (Hons) Classical Studies and Archaeology*	B
BA (Hons) Classics	B
BA (Hons) Classics and Archaeology*	B
BA (Hons) Criminology	B
BA (Hons) Criminology and Archaeology*	B
BA (Hons) Criminology and Communication & Media*	B
BA (Hons) Criminology and Sociology*	B
BA (Hons) Egyptology	B
BA (Hons) Egyptology and Ancient History*	B
BA (Hons) Egyptology and Classical Studies*	B
BA (Hons) Egyptology and Classics*	B
BA (Hons) Egyptology and Communication and Media*	B
BA (Hons) Egyptology and Criminology	B
BA (Hons) Environment and Planning	B
BA (Hons) International Politics and Policy	B
BA (Hons) International Politics & Policy and Ancient History*	B
BA (Hons) International Politics & Policy and Archaeology*	B
BA (Hons) International Politics & Policy and Communication & Media*	B
BA (Hons) International Politics & Policy and Criminology*	B
BA (Hons) International Politics & Policy and Film Studies*	B
BA (Hons) International Politics & Policy and French*	B
BA (Hons) International Politics & Policy and German*	B

BA (Hons) International Politics & Policy and Hispanic Studies*	B
BA (Hons) Politics	B
BA (Hons) Politics and Ancient History*	B
BA (Hons) Politics and Classical Studies*	B
BA (Hons) Politics and Communication & Media*	B
BA (Hons) Politics and Criminology*	B
BA (Hons) Politics and Film Studies*	B
BA (Hons) Politics and French*	B
BA (Hons) Politics and German*	B
BA (Hons) Politics and Hispanic Studies*	B
BA (Hons) Politics and Italian*	B
BA (Hons) Politics and Law*	B
BA (Hons) Politics and Music*	B
BA (Hons) Social Policy and Criminology*	B
BA (Hons) Social Policy and Law*	B
BA (Hons) Social Policy and Politics*	B
BA (Hons) Sociology	B
BA (Hons) Sociology and Communication & Media*	B
BA (Hons) Sociology and Film Studies*	B
BA (Hons) Sociology and International Politics & Policy*	B
BA (Hons) Sociology and Law*	B
BA (Hons) Sociology and Music*	B
BA (Hons) Sociology and Philosophy*	B
BA (Hons) Sociology and Politics*	B
BA (Hons) Sociology and Social Policy*	B
MPlan Town and Regional Planning	B
BA (Hons) Urban Planning	B

\* Available as an Honours Select 50:50 combination, allowing you to design your own degree.
† For these degrees, you must also submit a statement of purpose with your application to the Foundation Certificate. This will be followed by an interview with our Admissions team to assess your suitability for the course.



Browse more degree options

Available degree options may change over time, so visit our online degree finder for the most up-to-date list:

kaplanpathways.com/liverpool/ug-degrees

# Foundation Certificate for Business, Law and Social Sciences

Between them, Business, Law and the Social Sciences cover a huge range of different study areas. This course is designed to give you a solid foundation of knowledge and skills that will be applicable in these fields, and important for university-level study. Gaining an education in one of these areas could prepare you for an exciting and rewarding career in one of any number of interesting industries.

**Example careers:** Accountant | Architect | Economist | Financial Trader | Journalist | Lawyer | Music Teacher



## Your course options

	Academic entry level*	Minimum UKVI IELTS score	Course start	Course end	Degree entry	Tuition fees
2 terms	High school completion at the required level	5.5 (no less than 4.5 in any skill)	September 2019	June 2020	September 2020	£16,430
			October 2019	April 2020		
			January 2020	August 2020		
			March 2020	September 2020		
2.5 terms	High school completion at the required level	5.0 (no less than 4.0 in any skill)	October 2019	August 2020	September 2020	£17,655
			January 2020	June 2021	September 2021	
			July 2020			
3 terms	High school completion at the required level	4.5 (no less than 4.0 in any skill)	September 2019	August 2020	September 2020	£17,655
			October 2019	June 2021	September 2021	
			June 2020			
3.5 terms	High school completion at the required level	4.0 in all skills	September 2019	August 2020	September 2020	£20,600
			April 2020	June 2021	September 2021	
			July 2020	August 2021		
4 terms	High school completion at the required level	4.0 in all skills	March 2020	June 2021	September 2021	£24,080
			June 2020	August 2021		

\* Contact us for more information about country-specific entry requirements: [kaplanpathways.com/liverpool-contact](https://kaplanpathways.com/liverpool-contact)

## Course modules (see page 40 for module contents)

2 terms	2.5 and 3 terms	3.5 and 4 terms
<p><b>All students study these modules to gain a solid base of skills:</b></p> <ul style="list-style-type: none"><li>English for Academic Purposes</li><li>Extended Project†</li></ul> <p><b>You'll also take 1 to 3 of the following that fit your degree and career goals</b> (for progression to some degrees, the University will require you to take particular modules):</p> <ul style="list-style-type: none"><li>Business Organisations and Management</li><li>Contemporary Global Issues</li><li>Entrepreneurship</li><li>Intermediate Mathematics</li><li>Logic and Critical Thinking</li><li>Mathematics</li><li>People, Culture and Society</li><li>Statistics</li></ul>	<p><b>You'll also study these modules if your English level is below UKVI IELTS 5.5:</b></p> <ul style="list-style-type: none"><li>English for Academic Study 3</li><li>Independent and Collaborative Study</li><li>Reading and Writing 3</li><li>Speaking and Listening 3</li></ul> <p><b>Or if you have at least UKVI IELTS 5.5, or do not need to take an IELTS test, you'll study these modules:</b></p> <ul style="list-style-type: none"><li>Critical Reading, Writing and Reasoning for Higher Education</li><li>Independent and Collaborative Study</li></ul> <p><b>Plus 2 of the following 3:</b></p> <ul style="list-style-type: none"><li>Digital Applications</li><li>Preparatory Mathematics</li><li>Preparatory Statistics</li></ul>	<p><b>Study additional modules to help you reach university:</b></p> <ul style="list-style-type: none"><li>English for Academic Study 2</li><li>Reading and Writing 2</li><li>Speaking and Listening 2</li><li>Study Skills Preparation</li></ul>

## Personal development activities

During your pathway course, you'll also work on developing your online personal portfolio and practical skills, giving you a truly well-rounded experience. See page 41 for more details.

## Your degree possibilities

See page 32 for specific degrees that this Foundation Certificate can lead to.

† Students progressing to a degree in Architecture will take Creative Practice and Portfolio instead of the Extended Project module.

# Foundation Certificate for Science and Engineering

Science and Engineering cover a wide range of study areas. An education in these scientific fields will give you highly specialised knowledge and technical skills that will be hugely valuable in your career. On this course, you will develop a solid understanding of the basics of Science and / or Engineering, preparing you for an undergraduate degree at university.

**Example careers:** Aerospace Engineer | Biologist | Civil Engineer | Mathematician | Physiotherapist | Software Developer



## Your course options

	Academic entry level*	Minimum UKVI IELTS score	Course start	Course end	Degree entry	Tuition fees
2 terms	High school completion at the required level	5.5 (no less than 4.5 in any skill)	September 2019	June 2020	September 2020	£17,570
			October 2019	April 2020		
			January 2020	August 2020		
			March 2020	September 2020		
2.5 terms	High school completion at the required level	5.0 (no less than 4.0 in any skill)	October 2019	August 2020	September 2020	£19,050
			January 2020	June 2021	September 2021	
			July 2020			
3 terms	High school completion at the required level	4.5 (no less than 4.0 in any skill)	September 2019	August 2020	September 2020	£19,050
			October 2019	June 2021	September 2021	
			June 2020			
3.5 terms	High school completion at the required level	4.0 in all skills	September 2019	August 2020	September 2020	£22,220
			April 2020	June 2021	September 2021	
			July 2020	August 2021		
4 terms	High school completion at the required level	4.0 in all skills	March 2020	June 2021	September 2021	£25,300
			June 2020	August 2021		

\* Contact us for more information about country-specific entry requirements: [kaplanpathways.com/liverpool-contact](https://kaplanpathways.com/liverpool-contact)

## Course modules (see page 40 for module contents)

2 terms	2.5 and 3 terms	3.5 and 4 terms
<p><b>All students study these modules to gain a solid base of skills:</b></p> <ul style="list-style-type: none"><li>English for Academic Purposes</li><li>Extended Project</li></ul> <p><b>You'll also take 2-3 of the following that best fit your degree and career goals</b> (for progression to some degrees, the University will require you to take particular modules):</p> <ul style="list-style-type: none"><li>Biology</li><li>Chemistry</li><li>Entrepreneurship</li><li>Information Technology</li><li>Intermediate Digital Applications</li><li>Intermediate Mathematics</li><li>Mathematics</li><li>Physics</li><li>Statistics</li></ul>	<p><b>You'll also study these modules if your English level is below UKVI IELTS 5.5:</b></p> <ul style="list-style-type: none"><li>English for Academic Study 3</li><li>Independent and Collaborative Study</li><li>Reading and Writing 3</li><li>Speaking and Listening 3</li></ul> <p><b>Or if you have at least UKVI IELTS 5.5, or do not need to take an IELTS test, you'll study these modules:</b></p> <ul style="list-style-type: none"><li>Critical Reading, Writing and Reasoning for Higher Education</li><li>Independent and Collaborative Study</li></ul> <p><b>Plus 2 of the following 4:</b></p> <ul style="list-style-type: none"><li>Digital Applications</li><li>Preparatory Mathematics</li><li>Preparatory Science</li><li>Preparatory Statistics</li></ul>	<p><b>Study additional modules to help you reach university:</b></p> <ul style="list-style-type: none"><li>English for Academic Study 2</li><li>Reading and Writing 2</li><li>Speaking and Listening 2</li><li>Study Skills Preparation</li></ul>

**Personal development activities**  
During your pathway course, you'll also work on developing your online personal portfolio and practical skills, giving you a truly well-rounded experience. See page 41 for more details.

**Your degree possibilities**  
See page 32 for specific degrees that this Foundation Certificate can lead to.

# Undergraduate

## pathway course modules

Find out what you'll study in your course modules in the summaries below.

### 2-term modules

#### Biology

Gain an understanding of biological systems and organisms, as well as key laboratory processes.

#### Business Organisations and Management

Learn about the public and private sectors, the motivations and finances of companies, and the challenges faced by modern businesses.

#### Chemistry

Gain an understanding of chemical reactions, fundamental particles and the periodic table.

#### Contemporary Global Issues

Explore the big issues facing humanity in the 21st century, and critically evaluate their causes and effects.

#### Creative Practice and Portfolio

Research the work of selected practitioners in your field, responding to and evaluating their work, in your own illustrative portfolio.

#### English for Academic Purposes

Develop your English to the level you need for university study, and to really get involved in academic discussions.

#### Entrepreneurship

Familiarise yourself with varied concepts of creativity, entrepreneurship and innovation, and learn how to apply them in business.

#### Extended Project

Learn how to plan, carry out and report an extended project. You can choose a topic that matches your degree and career goals, and personal interests.

#### Information Technology

Discover the key concepts of computer science, including data representation and programming languages.

#### Intermediate Digital Applications

Develop skills in problem-solving and creative practice using a range of software packages appropriate to your field of study.

#### Intermediate Mathematics

Expand your knowledge of mathematical concepts including algebra, geometry, problem-solving, trigonometry and vectors.

#### Logic and Critical Thinking

Explore the concepts, history and skills relating to logic and critical thinking, and how they apply in real-world contexts.

#### Mathematics

Develop your mathematical skillset in areas such as algebra, decision maths, probabilities and statistics.

#### People, Culture and Society

Learn about the history, theories and issues that relate to human culture and society around the world.

#### Physics

Gain an understanding of topics like astrophysics, electromagnetism, mechanics and thermodynamics.

#### Statistics

Learn basic algebra, as well as the skills needed to analyse and apply statistics in a range of ways.

### 2.5 and 3-term modules

#### Critical Reading, Writing and Reasoning for Higher Education

Enhance your ability to read and understand complex ideas in English, and learn how to compose convincing written arguments.

#### Digital Applications

Develop your digital skill set, helping you to use digital tools to support your academic study, including using and citing digital sources.

#### English for Academic Study 3

Expand your knowledge of English grammar and vocabulary to the level required for degree study.

#### Independent and Collaborative Study

Work independently and in teams on an academic task, and practise applying your subject knowledge and study skills.

#### Preparatory Mathematics

Develop your numeracy skills, including algebra, geometry and graphs.

#### Preparatory Science

Gain an introduction to core scientific knowledge, and subject-specific language required to study the sciences.

#### Preparatory Statistics

Build on your knowledge of using statistics, including the use of data to illustrate facts and support theories.

#### Reading and Writing 3

Develop your English reading and writing skills to a sufficient level to communicate complex ideas.

#### Speaking and Listening 3

Improve your ability to listen and speak in English, allowing you to fully engage with academic topics.

### 3.5 and 4-term modules

#### English for Academic Study 2

Improve your English grammar and vocabulary in order to communicate in an academic environment.

#### Reading and Writing 2

Develop your English reading and writing so that you can understand and articulate ideas and reasoning.

#### Speaking and Listening 2

Practise listening and speaking so that you are better prepared for academic debate and discussion.

#### Study Skills Preparation

Gain an introduction to the wide range of skills and strategies you'll need to succeed at university, such as research methods and using and citing sources.

### Personal development activities (all courses)

#### Culture and activities

We'll help you have a hugely beneficial cultural and social experience, and encourage you to explore different activities, sports, crafts and much more. You might learn about local history and culture, or develop your wider subject knowledge and understanding of its related industries.

#### Digital and employability skills

Outside of your academic learning, you will also be taught skills that will be useful at university and later in life as well. You'll receive help in making the most of your creativity, improving your communication and developing your digital skills. We'll also help you build a CV, portfolio and online profile that will empower you after you graduate.

#### Social network

Forming a strong social network can be hugely beneficial, even if it's just to discuss and debate ideas. Not only will you get to know your classmates, you'll also have opportunities to join professional bodies, and network with students and industry professionals: something that can be really beneficial when you go on to start a career.

# Postgraduate pathways

You have a number of routes to a postgraduate degree at the University of Liverpool. The best one for you depends on your academic qualifications, English language level, subject preference, and whether your degree is taught in Liverpool or London.

### On-campus Pre-Master's in Liverpool:

You can study a Pre-Master's for one of the following subject areas at Liverpool International College:

Business, Economics and Finance	page 46
Law and Social Sciences	page 48
Science and Engineering	page 50

### Off-campus Pre-Master's in London:

You can study a Pre-Master's for one of the following subject areas at Kaplan International College London:

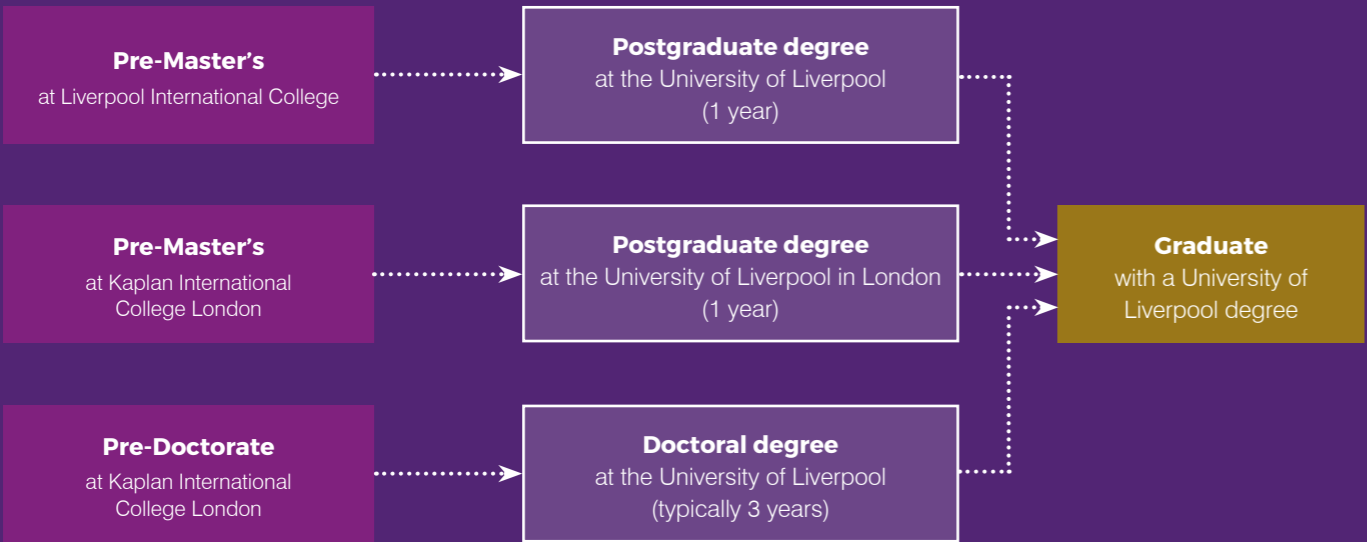
Business, Law and Social Sciences	page 52
-----------------------------------	---------

### Pre-Doctorate

To help you prepare for a doctoral degree. See page 56 for more information.

### What's the right path for me?

Turn to page 44 to find the postgraduate degree you want, and to see which pathway course or courses could lead there.



*I decided to study in the UK because I wanted to raise my level of English, and because in China it's helpful to have experience of studying abroad in the UK. My Pre-Master's course has really helped me improve my English language skills, and I've picked up new study habits that I can use during my postgraduate degree.*

**Shanqiang Zhang from China**  
Followed his path from a Pre-Master's to MSc Consumer Marketing

### Your path, your way: a course to fit your needs

- Your Pre-Master's course will have a special combination of modules designed to fit your degree and career aspirations. This means your course is matched to your unique goals.
- Some of these modules will be taken by you and all other students on your course. This gives you a solid base of common study skills that you'll need at university.
- In many cases, you can also customise your course by choosing some or all additional modules from a selection, and / or by selecting some project topics based on your interests and degree subject.
- During your Pre-Master's, you'll have frequent assessments to check you're on track to progress to your University of Liverpool degree.

### Guaranteed entry

You're guaranteed entry to your University of Liverpool postgraduate degree, if you pass your Pre-Master's course at the required level with good attendance.

# Choose your postgraduate degree

## Key to pathway courses

### Courses at Liverpool International College

- B** Pre-Master's for Business, Economics and Finance (page 46)
- L** Pre-Master's for Law and Social Sciences (page 48)
- S** Pre-Master's for Science and Engineering (page 50)

### Arts and Humanities

MA Art, Aesthetics and Cultural Institutions	L
MA Classics and Ancient History	L
MA Teaching English to Speakers of Other Languages	L

### Business

MSc Accounting	B
MSc Accounting and Finance	B
MSc Entrepreneurship	B
MSc Finance	B
MSc Finance and Investment Management	B
MBA Football Industries	B
MSc Human Resource Management	B
MSc International Business	B
Liverpool MBA	B
MSc Marketing	B
Masters in Management	B
MSc Operations and Supply Chain Management	B
MSc Project Management	B
MSc Sports Business and Management	B
MSc Strategic Communication	B

### Computing

MSc Advanced Computer Science	S
MSc Advanced Computer Science with Internet Economics	S
MSc Big Data and High Performance Computing	S
MSc Business Analytics and Big Data	B
MSc Computer Science	S

### Engineering

MSc (Eng) Advanced Manufacturing Systems and Technology	S
MSc (Eng) Advanced Mechanical Engineering	S
MSc Biomedical Engineering	S
MSc (Eng) Energy and Power Systems	S
MSc (Eng) Microelectronic Systems	S
MSc (Eng) Risk and Uncertainty	S
MSc (Eng) Sustainable Civil and Structural Engineering	S
MSc (Eng) Telecommunications and Wireless Systems	S

### Courses at Kaplan International College London

- B** Pre-Master's for Business, Law and Social Sciences (page 52)

### Law

LLM International Human Rights Law	L
LLM Law (General)	L
LLM Law, Medicine and Healthcare	L

### Media

MA Media and Communication: Digital Culture and Communication pathway	L
MA Media and Communication: Media and Politics pathway	L
MMus Music	L
MA Music Industry Studies	L

### Science

MSc Advanced Biological Sciences	S
MSc Advanced Chemical Sciences	S
MSc Environment and Climate Change	S
MSc Environmental Assessment and Management	L
MSc Environmental Sciences	S
MSc Geographic Data Science	S
MSc Marine Planning and Management	L
MSc Palaeoanthropology	S

### Social Science

MA Applied Linguistics	L
MA International Relations and Security	L
MA Irish Studies	L
MA Philosophy	L
MA / MCD Town and Regional Planning	L
MSc Urban Design and Property Development	B
MSc Urban Planning	B

## Browse more degree options

Available degree options may change over time, so visit our online degree finder for the most up-to-date list:

[? kaplanpathways.com/liverpool/pg-degrees](https://www.kaplanpathways.com/liverpool/pg-degrees)



Pre-Master's for  
**Business, Economics and Finance**  
at Liverpool International College

An education in the areas of Business, Economics and Finance will inform you about the global flow of money, and how businesses and economic systems operate. You will gain valuable knowledge and skills that could help you follow a career in any number of exciting industries and fields. This course will give you a base of study skills, and fully prepare you for a master's degree in a related subject.

**Example careers:** Accountant | Business Administrator | Financial Analyst | Investor | Marketing Manager



Your course options

	Academic entry level*	Minimum UKVI IELTS score	Course start	Course end	Degree entry	Tuition fees
2 terms	Degree-level education in a suitable subject	5.5 in all skills	September 2019	June 2020	September 2020	£19,000
			January 2020	August 2020		
			April 2020	September 2020		
2.5 terms†	Degree-level education in a suitable subject	5.0 in all skills	October 2019	August 2020	September 2020	£22,200
			July 2020	June 2021	September 2021	
3 terms†	Degree-level education in a suitable subject	5.0 (no less than 4.5 in any skill)	September 2019	August 2020	September 2020	£22,200
			June 2020	June 2021	September 2021	
3.5 terms†	Degree-level education in a suitable subject	4.5 in all skills	April 2020	June 2021	September 2021	£25,900
			July 2020	August 2021		
4 terms†	Degree-level education in a suitable subject	4.5 (no less than 4.0 in any skill)	March 2020	June 2021	September 2021	£27,800
			June 2020	August 2021		

\* Contact us for more information about country-specific entry requirements: kaplanpathways.com/liverpool-contact  
† These courses include an Entry to Pre-Master's component before the 2 terms of Pre-Master's study. For the 3.5- and 4-term courses, you will need an additional CAS.

Course modules  
(see page 54 for module contents)

2 terms	2.5 and 3 terms	3.5 and 4 terms
<p><b>All students study these modules to gain a solid base of skills:</b></p> <ul style="list-style-type: none"><li>English for Academic Purposes</li><li>Research Project</li><li>Organisational Management</li></ul> <p><b>You'll also take 1 of the following that best fit your degree and career goals</b> (for progression to some degrees, the University will require you to take a particular module):</p> <ul style="list-style-type: none"><li>Advanced Social Science</li><li>Advanced Statistics</li><li>Project Management</li><li>Strategic Management</li></ul>	<p><b>You'll also study these modules to help you prepare for university:</b></p> <ul style="list-style-type: none"><li>English for Academic Study 3</li><li>Independent and Collaborative Study</li><li>Reading and Writing 3</li><li>Speaking and Listening 3</li></ul>	<p><b>Study additional modules to help you reach university:</b></p> <ul style="list-style-type: none"><li>English for Academic Study 2</li><li>Reading and Writing 2</li><li>Speaking and Listening 2</li><li>Study Skills Preparation</li></ul>

**Personal development activities**  
During your pathway course, you'll also work on developing your online personal portfolio and practical skills, giving you a truly well-rounded experience. See page 55 for more details.

**Your degree possibilities**  
See page 44 for specific degrees that this Pre-Master's can lead to.

Pre-Master's for  
Law and Social Sciences  
at Liverpool International College

The Social Sciences cover a wide range of aspects of human society, while studying Law will give you an understanding of how those societies uphold civility and good social order. On this course, you'll develop important skills for studying a related master's degree, helping you start a career in anything from politics to human rights.

Example careers: Barrister | Civil Servant | Journalist | Judge | Media Producer | Politician | Town Planner



Your course options

	Academic entry level*	Minimum UKVI IELTS score	Course start	Course end	Degree entry	Tuition fees
2 terms	Degree-level education in a suitable subject	5.5 in all skills	September 2019	June 2020	September 2020	£16,620
			January 2020	August 2020		
			April 2020	September 2020		
2.5 terms†	Degree-level education in a suitable subject	5.0 in all skills	October 2019	August 2020	September 2020	£19,840
			July 2020	June 2021	September 2021	
3 terms†	Degree-level education in a suitable subject	5.0 (no less than 4.5 in any skill)	September 2019	August 2020	September 2020	£19,840
			June 2020	June 2021	September 2021	
3.5 terms†	Degree-level education in a suitable subject	4.5 in all skills	April 2020	June 2021	September 2021	£23,140
			July 2020	August 2021		
4 terms†	Degree-level education in a suitable subject	4.5 (no less than 4.0 in any skill)	March 2020	June 2021	September 2021	£25,500
			June 2020	August 2021		

\* Contact us for more information about country-specific entry requirements: kaplanpathways.com/liverpool-contact  
† These courses include an Entry to Pre-Master's component before the 2 terms of Pre-Master's study. For the 3.5- and 4-term courses, you will need an additional CAS.

Course modules  
(see page 54 for module contents)

2 terms	2.5 and 3 terms	3.5 and 4 terms
<p><b>All students study these modules to gain a solid base of skills:</b></p> <ul style="list-style-type: none"><li>English for Academic Purposes</li><li>Research Project</li></ul> <p><b>You'll also take 2 of the following that best fit your degree and career goals</b> (for progression to some degrees, the University will require you to take particular modules):</p> <ul style="list-style-type: none"><li>Advanced Social Science</li><li>Advanced Statistics</li><li>Project Management</li><li>Strategic Management</li></ul>	<p><b>You'll also study these modules to help you prepare for university:</b></p> <ul style="list-style-type: none"><li>English for Academic Study 3</li><li>Independent and Collaborative Study</li><li>Reading and Writing 3</li><li>Speaking and Listening 3</li></ul>	<p><b>Study additional modules to help you reach university:</b></p> <ul style="list-style-type: none"><li>English for Academic Study 2</li><li>Reading and Writing 2</li><li>Speaking and Listening 2</li><li>Study Skills Preparation</li></ul>

**Personal development activities**  
During your pathway course, you'll also work on developing your online personal portfolio and practical skills, giving you a truly well-rounded experience. See page 55 for more details.

**Your degree possibilities**  
See page 44 for specific degrees that this Pre-Master's can lead to.

# Pre-Master's for Science and Engineering at Liverpool International College

If you want to go into a highly technical career, you will likely need a strong education in Science or Engineering. The hard sciences all require specialised skills and knowledge, and can lead you to a range of fascinating careers. This course will give you a base of scientific understanding that you'll need to succeed on a related master's degree.

**Example careers:** Biologist | Chemist | Conservationist | Geographer | IT Specialist | Mechanical Engineer

## Your course options

	Academic entry level*	Minimum UKVI IELTS score	Course start	Course end	Degree entry	Tuition fees
2 terms	Degree-level education in a suitable subject	5.5 in all skills	September 2019	June 2020	September 2020	£16,880
			January 2020	August 2020		
			April 2020	September 2020		
2.5 terms†	Degree-level education in a suitable subject	5.0 in all skills	October 2019	August 2020	September 2020	£20,100
			July 2020	June 2021	September 2021	
3 terms†	Degree-level education in a suitable subject	5.0 (no less than 4.5 in any skill)	September 2019	August 2020	September 2020	£20,100
			June 2020	June 2021	September 2021	
3.5 terms†	Degree-level education in a suitable subject	4.5 in all skills	April 2020	June 2021	September 2021	£23,450
			July 2020	August 2021		
4 terms†	Degree-level education in a suitable subject	4.5 (no less than 4.0 in any skill)	March 2020	June 2021	September 2021	£25,780
			June 2020	August 2021		

\* Contact us for more information about country-specific entry requirements: [kaplanpathways.com/liverpool-contact](https://kaplanpathways.com/liverpool-contact)  
† These courses include an Entry to Pre-Master's component before the 2 terms of Pre-Master's study. For the 3.5- and 4-term courses, you will need an additional CAS.

## Course modules (see page 54 for module contents)

2 terms	2.5 and 3 terms	3.5 and 4 terms
<p><b>All students study these modules to gain a solid base of skills:</b></p> <ul style="list-style-type: none"><li>English for Academic Purposes</li><li>Research Project</li></ul> <p><b>You'll also take 2 of the following that best fit your degree and career goals</b> (for progression to some degrees, the University will require you to take particular modules):</p> <ul style="list-style-type: none"><li>Advanced Statistics</li><li>Engineering, Science and Society</li><li>Project Management</li></ul>	<p><b>You'll also study these modules to help you prepare for university:</b></p> <ul style="list-style-type: none"><li>English for Academic Study 3</li><li>Independent and Collaborative Study</li><li>Reading and Writing 3</li><li>Speaking and Listening 3</li></ul>	<p><b>Study additional modules to help you reach university:</b></p> <ul style="list-style-type: none"><li>English for Academic Study 2</li><li>Reading and Writing 2</li><li>Speaking and Listening 2</li><li>Study Skills Preparation</li></ul>

**Personal development activities**  
During your pathway course, you'll also work on developing your online personal portfolio and practical skills, giving you a truly well-rounded experience. See page 55 for more details.

**Your degree possibilities**  
See page 44 for specific degrees that this Pre-Master's can lead to.

Pre-Master's for  
**Business, Law and Social Sciences**  
at Kaplan International College London

This course will give you an important base of knowledge, and a skill set useful in the areas of Business, Law and the Social Sciences. You'll study this course at Kaplan International College London, and can go on to study a degree at the University of Liverpool in London.

**Example careers:** Accountant | Communications Manager | Financial Analyst | Investment Manager | Property Developer

Your course options

	Academic entry level*	Minimum UKVI IELTS score	Course start	Course end	Degree entry	Tuition fees
2 terms	Degree-level education in a suitable subject	5.5 (no less than 5.0 in any skill)	September 2019	June 2020	September 2020	£17,490
			January 2020	August 2020		
			March 2020			
2.5 terms	Degree-level education in a suitable subject	5.0 in all skills	October 2019	August 2020	September 2020	£19,055
			July 2020	June 2021	September 2021	
3 terms	Degree-level education in a suitable subject	5.0 (no less than 4.5 in any skill)	September 2019	August 2020	September 2020	£19,055
			June 2020	June 2021	September 2021	
3.5 terms	Degree-level education in a suitable subject	4.5 in all skills	April 2020	June 2021	September 2021	£22,220
			July 2020	August 2021		
4 terms	Degree-level education in a suitable subject	4.5 (no less than 4.0 in any skill)	March 2020	June 2021	September 2021	£24,560
			June 2020	August 2021		

\* Contact us for more information about country-specific entry requirements: [kaplanpathways.com/liverpool-contact](https://kaplanpathways.com/liverpool-contact)

Course modules  
(see page 54 for module contents)

2 terms

2.5 and 3 terms

3.5 and 4 terms

All students study these modules to gain a solid base of skills:

- English for Academic Purposes
- Research Project

You'll also take 2 of the following that best fit your degree and career goals

(for progression to some degrees, the University will require you to take particular modules):

- Advanced Social Science
- Advanced Statistics
- Philosophy, History and Culture
- Project Management
- Strategic Management
- UK Society and Culture (Advanced)

You'll also study these modules to help you prepare for university:

- English for Academic Study 3
- Independent and Collaborative Study
- Reading and Writing 3
- Speaking and Listening 3

Study additional modules to help you reach university:

- English for Academic Study 2
- Reading and Writing 2
- Speaking and Listening 2
- Study Skills Preparation

Personal development activities

During your pathway course, you'll also work on developing your online personal portfolio and practical skills, giving you a truly well-rounded experience. See page 55 for more details.

Your degree possibilities

See page 44 for specific degrees that this Pre-Master's can lead to.

# Postgraduate

## *pathway course modules*

Find out what you'll study in your course modules in the summaries below.

### 2-term modules

#### Advanced Social Science

Learn about the key theories in social sciences, and their relation to methodologies in the field.

#### Advanced Statistics

Critique research data and apply standard statistical tools for the analysis of research quality.

#### Engineering, Science and Society

Gain an awareness of ethical issues and debates surrounding research and innovation in the sciences.

#### English for Academic Purposes

Develop your English to the level you need for university study, and to really get involved in academic discussions.

#### Organisational Management

Evaluate the key issues, theories and techniques relating to organisational behaviour, environmental analysis and global strategy.

#### Philosophy, History and Culture

Explore Western philosophy and its history, and analyse events and developments in a historical and cultural context.

#### Project Management

Gain key skills in project management, and apply your knowledge to a project.

### Research Project

Plan, execute and report an in-depth research project. You can choose a topic based on your degree and career goals, and personal interests.

### Strategic Management

Explore key concepts of strategic management, and evaluate their impact on businesses and their operations.

### UK Society and Culture (Advanced)

Learn more about a range of aspects of British culture, as well as British cultural and social institutions.

### 2.5 and 3-term modules

#### English for Academic Study 3

Expand your knowledge of English grammar and vocabulary to the level required for degree study.

#### Independent and Collaborative Study

Work independently and in teams on an academic task, and practise applying your subject knowledge and study skills.

#### Reading and Writing 3

Develop your English reading and writing skills to a sufficient level to communicate complex ideas.

#### Speaking and Listening 3

Improve your ability to listen and speak in English, allowing you to fully engage with academic topics.

### 3.5 and 4-term modules

#### English for Academic Study 2

Improve your English grammar and vocabulary in order to communicate in an academic environment.

#### Reading and Writing 2

Develop your English reading and writing so that you can understand and articulate ideas and reasoning.

#### Speaking and Listening 2

Practise listening and speaking so that you are better prepared for academic debate and discussion.

#### Study Skills Preparation

Gain an introduction to the wide range of skills and strategies you'll need to succeed at university, such as research methods and using and citing sources.

### Personal development activities (all courses)

#### Culture and activities

We'll help you have a hugely beneficial cultural and social experience, and encourage you to explore different activities, sports, crafts and much more. You might learn about local history and culture, or develop your wider subject knowledge and understanding of its related industries.

#### Digital and employability skills

Outside of your academic learning, you will also be taught skills that will be useful at university and later in life as well. You'll receive help in making the most of your creativity, improving your communication and developing your digital skills. We'll also help you build a CV, portfolio and online profile that will empower you after you graduate.

#### Social network

Forming a strong social network can be hugely beneficial, even if it's just to discuss and debate ideas. Not only will you get to know your classmates, you'll also have opportunities to join professional bodies, and network with students and industry professionals: something that can be really beneficial when you go on to start a career.

# Pre-Doctorate

at Kaplan International College London

The Pre-Doctorate course is specially designed around the needs of a doctoral-level international student, and will help guide you through the process of applying for a UK doctoral degree.

**Guaranteed interview:** When you study a Pre-Doctorate, you are guaranteed an interview for a doctoral degree at the University of Liverpool if your research topic matches their priority areas. If they do not match, or if you do not pass the interview, we'll advise you on other universities you can apply to.



## Your course options

	Academic entry level	Minimum UKVI IELTS score	Course start	Course end	Degree entry	Tuition fees
1 term	Good honours degree, or master's degree	6.0 in all skills	September 2019 May 2020	December 2019 July 2020	January 2020 September 2020	£4,685
2 terms	Good honours degree, or master's degree	5.5 in all skills	February 2020 June 2020	July 2020 December 2020	September 2020 January 2021	£7,170
3 terms	Good honours degree, or master's degree	5.5 (no less than 5.0 in any skill)	October 2019	July 2020	September 2020	£9,105

## Course modules

1 term	2 terms	3 terms
<p><b>All Pre-Doctorate students will take:</b></p> <p><b>Academic Skills and Communication for Doctoral Study</b></p> <ul style="list-style-type: none"><li>● Become familiar with key terminology</li><li>● Develop your written and spoken critical thinking</li><li>● Understand your subject specialism</li></ul> <p><b>Research Proposal Design for Doctoral Study</b></p> <ul style="list-style-type: none"><li>● Develop a research topic</li><li>● Understand data collection methods</li><li>● Plan a viable proposal for your doctorate</li></ul> <p><b>The Doctoral Candidate</b></p> <ul style="list-style-type: none"><li>● Explore the key skills required for doctoral study</li><li>● Learn what makes a successful application</li><li>● Consider your future career</li></ul>	<p><b>You'll also study these modules to help you prepare for university:</b></p> <p><b>Skills for Study 2</b></p> <ul style="list-style-type: none"><li>● Analyse and critically evaluate descriptions of data</li><li>● Write reports using graphical and textual sources</li><li>● Develop strategies to organise data from multiple sources</li></ul> <p><b>Skills for Study 3</b></p> <ul style="list-style-type: none"><li>● Read and evaluate research presented in written texts and oral presentations</li><li>● Write an extended, critical essay using an appropriate academic style</li><li>● Give a presentation using an appropriate academic style</li></ul>	<p><b>Study additional modules to help you reach university:</b></p> <p><b>Language for Study 1</b></p> <ul style="list-style-type: none"><li>● Learn the language skills to understand important details in written texts</li><li>● Develop ways to summarise and quote from a range of academic sources</li></ul> <p><b>Language for Study 2</b></p> <ul style="list-style-type: none"><li>● Understand extended descriptions of research data, processes and findings</li><li>● Learn ways to summarise data from multiples types of sources</li><li>● Integrate graphical and textual references as evidence within written or oral work</li></ul> <p><b>Skills for Study 1</b></p> <ul style="list-style-type: none"><li>● Demonstrate understanding of a presentation and take notes for specific purposes</li><li>● Understand the basic methods of referencing source materials as evidence in an essay and a presentation</li></ul>

### Degree possibilities

The Pre-Doctorate can lead to a number of doctoral degree research areas at the University of Liverpool, such as:

- Architecture
- Biological Sciences
- Business and Management Studies
- Chemistry
- Computer Science and Informatics
- Earth Systems and Environmental Sciences
- Economics
- Electrical Engineering and Electronics
- General Engineering
- Geography, Environmental Studies and Archaeology
- History
- Law
- Mathematical Sciences
- Medicine
- Physics
- Politics and International Studies
- Psychology, Psychiatry and Neuroscience
- Public Health, Health Services and Primary Care
- Sociology

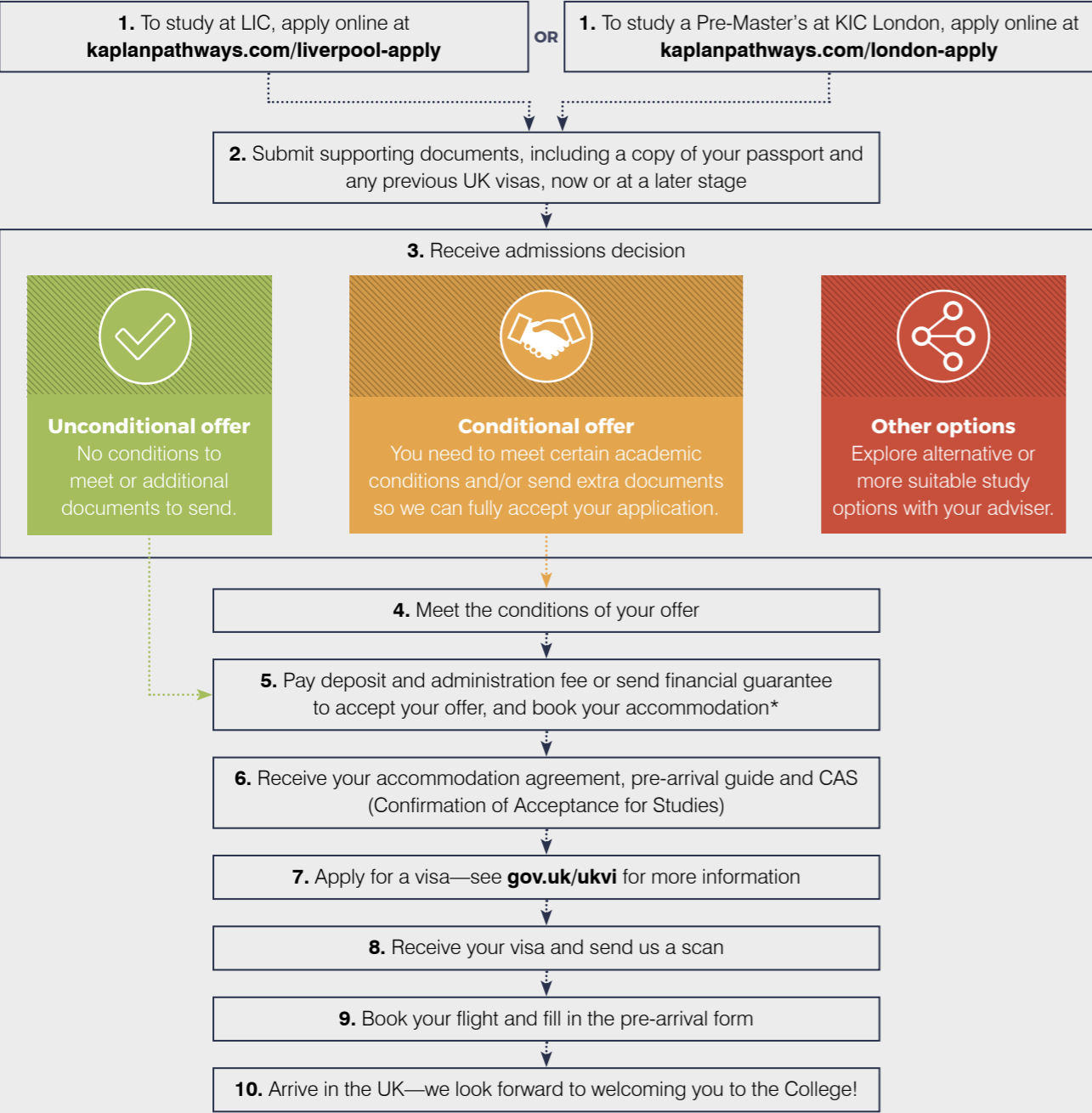


*Start*  
**your path**

# How to apply

Applying to the University of Liverpool with Kaplan is easy! Just follow the step-by-step guide below, and if you have any questions, our friendly advisers will be happy to help.

## Join us on a pathway course in 10 simple steps



❓ If you're interested in studying the Pre-Doctorate, please visit: [kaplanpathways.com/pre-doc](https://kaplanpathways.com/pre-doc)

\* To book your accommodation, complete the accommodation booking form and pay the holding fee when you accept your study offer. You will then receive your accommodation agreement, which you will need to read, sign and return to reserve your room.

# Your questions answered

If you still have questions about studying with Kaplan, let us try to answer them below. Alternatively, if you'd like more information, you'll find contact details on page 63.

## How much money do I need to study a pathway course?

Studying in the UK is a big investment, so you need to plan ahead. You must have at least £1,015 for each month of your pathway course (£1,265 in London), up to a maximum of 9 months, as well as funds to cover any unpaid tuition fees. This must be held in a recognised bank account for at least 28 days before you make your application for your Tier 4 (General) student visa.

## What supporting items do I need to provide?

For a complete application, you need to send a few extra documents, including:

- copies of your passport and any previous UK visas
- IELTS certificate (UKVI Academic)
- academic transcripts (plus certified translations if the originals aren't in English)

You can still apply without all these items, and submit them later.

## How long does the application process take?

If your study application is complete and successful, once our Admissions team receives it, they will issue an offer within 1 working day. The duration of the process that follows can vary, so it's good to apply at least a few months in advance.

## Do I need insurance?

You'll need to be fully covered by student insurance for the whole of your pathway course in the UK. Together with Endsleigh, a leading insurance provider, we can offer a comprehensive policy. Find out more at: [kaplanpathways.com/insurance](https://kaplanpathways.com/insurance)

## Are scholarships available?

Some partial tuition fee scholarships for pathway courses and degrees are offered to students with good grades. Find out more at: [kaplanpathways.com/how-to-apply/scholarships](https://kaplanpathways.com/how-to-apply/scholarships)

## Do I need a guardian during my studies?

If you're under 18 years old, you'll need a legal guardian in the UK until you turn 18. This is something we can help arrange. You can find out more about guardians at: [collegeguardians.co.uk](https://collegeguardians.co.uk)

## Do you speak my language?

If you, or your parents, want to speak to us in your first language, we can help! Between them, our education experts speak a number of different languages, so you'll be able to talk to somebody.

## Do I need to bring a laptop?

During your studies, you will need a laptop or similar device. Don't worry if you don't have one: we can help you purchase one when you arrive in the UK.

❓ Watch our helpful videos at: [kpln.org/student-faq](https://kpln.org/student-faq)

## Guide to costs for studying a pathway course

	Liverpool International College	Kaplan International College London	Notes
<b>Tuition fees</b>	£16,430 to £27,800	£17,490 to £24,780	Depending on your course level, subject and length and typically including a £5,000 deposit
<b>Administration fee</b>	£200	£200	Payable at the same time as the tuition deposit
<b>Course books</b>	Up to £400	Up to £400	Depending on your course length and subject
<b>Accommodation</b>	£4,975 to £14,330 <sup>†</sup>	£8,995 to £24,442 <sup>†</sup>	Depending on your accommodation option and course length, and including a £1,000 holding fee
<b>Living costs</b>	At least £1,015 per month	At least £1,265 per month	In line with UKVI regulations
<b>Insurance</b>	£227 to £700	£227 to £700	Depending on your course length

<sup>†</sup> These amounts are based on previous academic years. Figures for 2019–20 will be available online soon. Contact us for more information.



# *We hope to welcome you to Liverpool soon!*

## Contact us

There are many ways to gain entry to the University of Liverpool with Kaplan. Contact us, and let us help you follow your path, your way.

### Contact our Application and Admissions Centre

Our UK-based centre is home to a fantastic team of education advisers. They can tell you about available course options, guide you through your application, and provide useful pre-arrival information.

📞 +44 (0)20 7045 4925

👉 [kaplanpathways.com/liverpool-contact](https://kaplanpathways.com/liverpool-contact)

### Meet us in your country

Let us come to you. Our experienced education consultants frequently travel around the world meeting students. Arrange to meet one of them in your country to discuss your ambitions and study plans.

👉 [kaplanpathways.com/kaplan-in-my-country](https://kaplanpathways.com/kaplan-in-my-country)

### Find your local country office

For advice close to home, you can contact one of our country offices. We also have a network of trusted education agents in 100+ countries around the world, so help is nearby.

👉 [kaplanpathways.com/offices](https://kaplanpathways.com/offices)

This prospectus has been drafted in advance of the academic year to which it applies. Every effort has been made to ensure that the information is accurate at the time of publishing, but changes (for example to course content) are likely to occur given the interval between publishing and commencement of the course. It is therefore very important to check the website or contact us for any updates before you apply. Once you have applied, any change which impacts the terms and conditions of your offer or a significant part of your programme will be communicated to you. Published December 2018.

Liverpool International College is operated by Kaplan Liverpool Limited (Company number: 06217892), with registered address: 2nd Floor, Warwick Building, Kensington Village, Avonmore Road, London W14 8HQ.

Kaplan International College London is operated by Kaplan International College London Limited (company number: 06533974), with registered address: 2nd Floor, Warwick Building, Kensington Village, Avonmore Road, London, W14 8HQ.

