



UNIVERSITY OF  
**LEICESTER**

INTERNATIONAL STUDY CENTRE





# Welcome



Choose one of our International Study Centre programmes as your pathway to a degree at the University of Leicester, and be supported by expert teachers who are dedicated to your academic success.

We are passionate about giving you the chance to find your way in a supportive environment. Our close working relationship with all departments at the University ensures a smooth transition to undergraduate study for all successful students.

## Contents

- 2 Why choose Leicester?
- 4 Study in a city centre location
- 6 Flexibility and choice
- 8 Your life in Leicester
- 10 Your career development journey
- 12 International Study Centre
- 16 Your accommodation
- 18 Student support
- 20 International Foundation Year
- 26 International Year One
- 30 Popular progression degrees
- 32 Your application



# Why choose Leicester?





**Ranked 30th  
in the UK**

Complete University  
Guide 2018



**Top 160  
in the world**

Times Higher Education World  
University Rankings 2018



**Top 25 in the UK**  
targeted by  
graduate recruiters

The Times Top 100 Graduate  
Employers 2017/18



**£500 million  
invested** in a  
21st century  
campus



**Top 10 in the UK**  
for producing the  
most leaders of  
industry

Emolument 2016

# Study in a city centre location

Live and study in Leicester's city centre, close to everything you need.



## TRAVEL BY TRAIN TO OTHER CITIES:

**Birmingham:** 50 minutes  
**London:** about 1 hour  
**Sheffield:** just over 1 hour

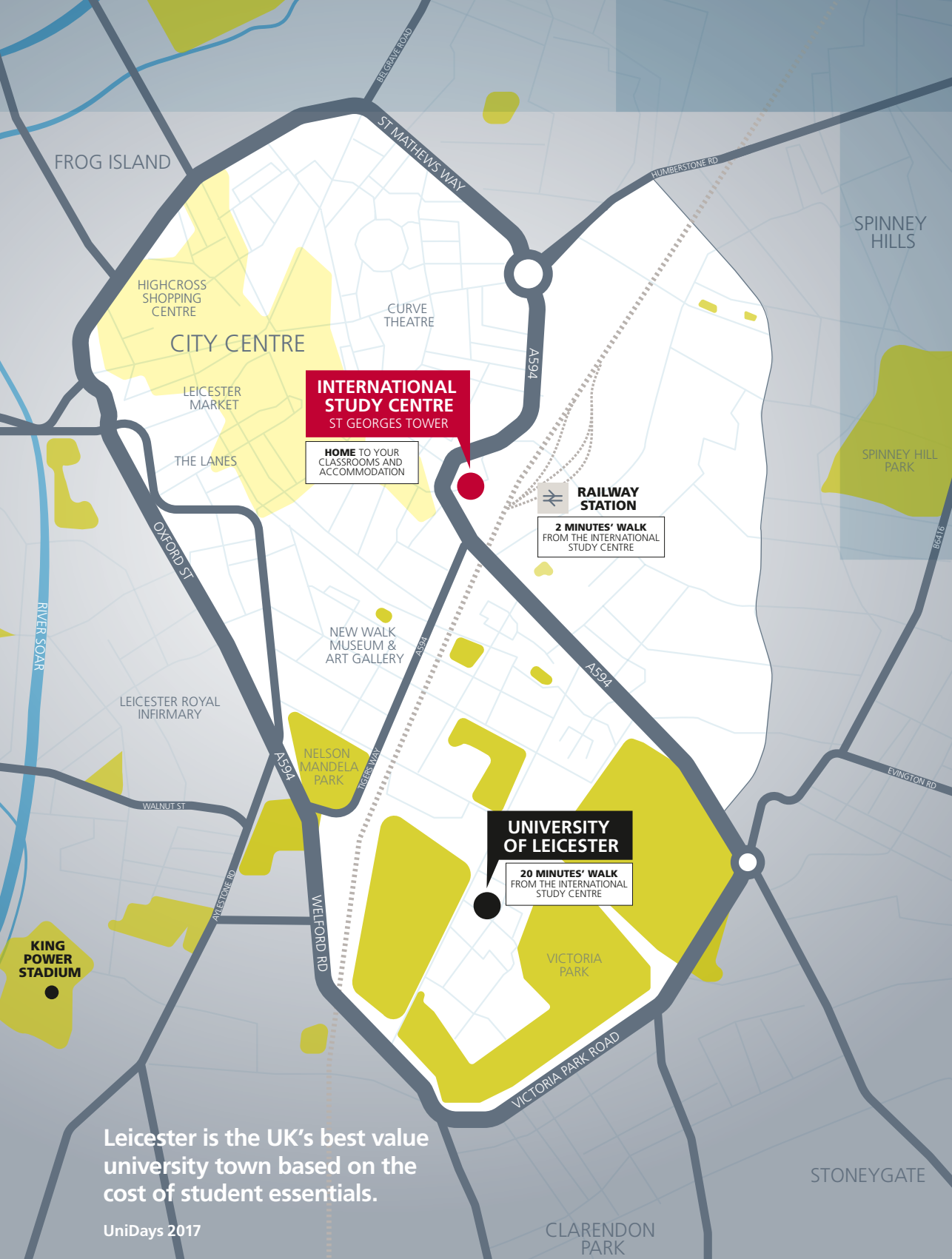
## TRAVEL BY TRAIN TO CONVENIENT AIRPORTS:

**Birmingham:** about 1 hour  
**London Gatwick:** just over 2 hours  
**London Heathrow:** just over 2 hours  
**London Stansted:** just over 2 hours

Times based on fastest available train.







Leicester is the UK's best value university town based on the cost of student essentials.

UniDays 2017

“I think studying at Leicester will help you get the highest grades that you can, and I think my degree will help me to achieve the goals for my career. My family are very proud that I’m graduating.”

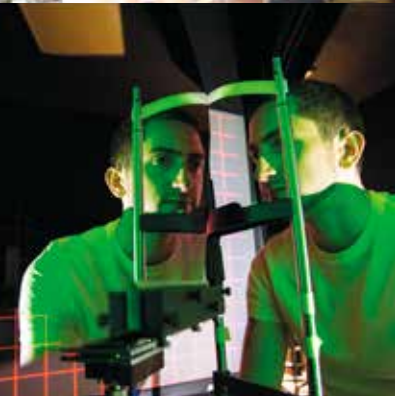
**Aziza from Saudi Arabia**

Studied International Foundation Year  
in Science

Graduated with a BSc Biological Sciences  
(Physiology with Pharmacology)







# Flexibility and choice

Study for a degree designed around you by choosing between three programme structures.

## **STUDY ONE SUBJECT**

A Single Honours degree allows you to study a single subject in depth, which is great if you have a specific career direction in mind.

## **STUDY TWO SUBJECTS**

Joint Honours degrees enable you to study two complementary subjects equally, broadening your skill set.

## **TAILOR YOUR DEGREE**

Major/Minor Honours degrees allow you to create your own degree. You will study one major subject in depth (75% of your studies) and also explore an additional minor area (25% of your studies).



Leicester Cathedral



University of Leicester Students' Union



Highcross Shopping Centre





Diwali in Leicester



Leicester Market



O2 Academy Leicester

# Your life in Leicester

Experience university life in a vibrant and multicultural city, with lots to see and do.

- Celebrate Diwali in one of the **biggest festivals outside India**
- Discover **Leicester's rich history** in the city's various museums
- **Eat delicious Indian food** on Belgrave Road
- Explore Leicester Market – **one of Europe's largest**
- **Cheer on Leicester City Football Club** at the King Power Stadium
- Experience the **amazing atmosphere at the Caribbean Carnival**
- Find whatever you need at **Highcross Shopping Centre** and **The Lanes**
- Enjoy live music and a great night out at the **O2 Academy**, located on the University campus

“I love the lifestyle here and the location of the University of Leicester is very good. I am able to walk to the city centre too, where I can find everything I need.”

#### **Danni from China**

Studied International Foundation Year  
in Society and Culture  
Progressed to BA Media and Communication



“My year in industry experience at Rolls-Royce was amazing. I learnt a lot of new things, I developed my technical knowledge and I really enjoyed working in a real-world project.”

**Oishi from India**

Studied International Foundation Year  
in Engineering and Technology  
Graduated with BEng Software  
and Electronic Engineering  
Secured a job with Rolls-Royce as  
a Software Verification Engineer



# Your career development journey

From the moment you arrive through to your graduation and beyond, you will be supported to ensure you can develop the skills employers are looking for.

## SKILLS FOR SUCCESS AT THE INTERNATIONAL STUDY CENTRE

To help you fulfil your career ambitions, we have integrated a careers service called CareerAhead into the programmes at the International Study Centre.


The service is designed to help you become a confident, highly skilled and extremely employable graduate, giving you a head start in today's competitive graduate employment market.

## CAREER SUPPORT AT THE UNIVERSITY

- Industry representatives visit the campus for workshops and talks
- Complete The Leicester Award, an inspirational personal development programme
- The Career Development Service advisers provide support with job applications and work opportunities
- Start your own business with advice from start-up specialists
- Access an influential alumni network of more than 180,000 graduates

**95% of students are in employment or further study six months after graduation.**

Destinations of Leavers from Higher Education Survey 2017

A female scientist with dark hair, wearing safety goggles and a white lab coat, is smiling while holding a glass flask containing a red liquid. She is wearing blue nitrile gloves. The background shows a laboratory setting with various glassware and equipment. The text "International Study Centre" is overlaid on the bottom right of the image.

# International Study Centre





**87% of our students who completed their course were offered a place to study at the University of Leicester in 2017.**



Classrooms at the International Study Centre



The David Wilson Library, University of Leicester



Information points



University of Leicester Students' Union



Victoria Park

## Get ready to study an undergraduate degree at the University of Leicester.

The University of Leicester International Study Centre provides specialist degree preparation for international students. When you join us, you will receive a conditional offer to study a degree at the University of Leicester. Our programmes combine academic modules, study skills and English language training. These skills are designed to provide you with the best opportunity to succeed when you progress to your undergraduate degree.

As a student at the International Study Centre, you will benefit from:

- A **fantastic city centre location** in the heart of Leicester, close to the train station and only 20 minutes' walk from the University
- **Small class sizes** to ensure you get the most out of your education
- **University-style teaching** to prepare for your degree
- **Access to an extensive range of University facilities**, including the Library, sports facilities and Students' Union

“The International Study Centre prepares students well for life at university because you need specific skills to be successful. The International Study Centre does not just prepare you for student life, but also for employability.”

### Manal from India

Studied International Foundation Year  
in Economics and Management  
Graduated with a BA Management Studies



Discover the International Study Centre  
through our 360° VR video  
[www.le.ac.uk/isc](http://www.le.ac.uk/isc)



# Your accommodation





During your time at the International Study Centre you have the option to live in St Georges Tower, which is where you will also be taught.

### ST GEORGES TOWER

- A private bathroom and shower
- Your own kitchenette, complete with fridge, cooker and microwave
- Wi-Fi and your own television
- Bedding and catering pack provided on arrival, with access to laundry services
- 24-hour reception with staff
- A common room with games consoles, vending machines and table tennis
- Living in the city centre gives you easy access to a wide range of restaurants, cafes and supermarkets

### MORE ACCOMMODATION OPTIONS

You can also immerse yourself in University life from day one at the International Study Centre, by choosing to live in the University accommodation.

The University's accommodation provides safe and comfortable rooms, with the option to choose between catered or self-catered, and standard or en-suite options.

Alternatively, you may choose to arrange your own private accommodation.

### AT THE UNIVERSITY

During your university degree, you are guaranteed a room in University-managed accommodation.\*

For more information visit [www.le.ac.uk/accommodation-ug](http://www.le.ac.uk/accommodation-ug)

\*Room guaranteed if you apply by the set deadline for your year of study.



Discover the International Study Centre accommodation through our 360° VR video  
[www.le.ac.uk/isc/accommodation](http://www.le.ac.uk/isc/accommodation)







# Student support

Our aim is to make your stay in the UK as enjoyable and academically productive as possible.

## AT THE INTERNATIONAL STUDY CENTRE

Our Welcome Week programme takes place in the first week of the academic year, allowing you to meet other international students and carry out all those essential tasks - such as opening a bank account and registering with the police.

The staff at the International Study Centre will support you through everything, ensuring you always have access to a high level of pastoral care.

## AT THE UNIVERSITY

There is a wide range of support services, which can help you overcome any challenges you may experience, including:

- Student Welfare Service
- Counselling Service
- Learning Development Team
- AccessAbility Centre
- Healthy Living Service
- Mental Wellbeing Service
- Chaplaincy

“The teachers were really supportive, like a family. You feel at home and they give you their full support. You feel like someone is backing you up no matter what happens.”

**Alexandra from Hong Kong**  
Progressed to BSc Psychology  
with Cognitive Neuroscience



# International Foundation Year

The International Foundation Year provides you with a pathway to undergraduate study at the University of Leicester.

After you complete the course and achieve the required grades, you will be able to progress to the first year of your three-year undergraduate degree.

### CHOOSE YOUR ROUTE:

- Economics and Management
- Engineering and Technology
- Science
- Society and Culture

### KEY FACTS

**Course length** Three-term

**Start dates** September or January

#### Entry requirements

**Academic:** Good high school graduation grades or equivalent

**English language:** Academic IELTS for UKVI 5.0 (minimum 5.0 in writing)\*

**Age:** You must be at least 17 years old

### NEED TO IMPROVE YOUR IELTS LEVEL?

We have a one-term English Language Preparation course available to raise your IELTS to the required level.

**Start dates** June or September

#### Entry requirement

**English language:** Academic IELTS for UKVI 4.0 (4.0 in all skills)\*

\*If you do not need a Tier 4 visa, or are exempted in another way, we can accept equivalent proof of English.

“Leicester is a famous university and known worldwide, with good academics and a high level of Management Studies. It is a multicultural city and I can make friends with students from all over the world.”

**Xinxu from China**

Progressed to BA Management Studies

### STUDY PLAN OPTIONS

IELTS FOR UKVI	JUN	JUL	AUG	SEPT	OCT	NOV	DEC	JAN	FEB	MAR	APR	MAY	JUN	JUL	AUG	SEPT
5.0 (5.0 in writing)				●	●	●	●	●	●	●	●	●	●	●	●	
5.0 (5.0 in writing)								●	●	●	●	●	●	●	●	
4.0 (4.0 in all skills)	●	●	●	●	●	●	●	●	●	●	●	●	●	●	●	
4.0 (4.0 in all skills)				●	●	●	●	●	●	●	●	●	●	●	●	

Start the first year of your undergraduate degree

● International Foundation Year    ● English Language Preparation    ● Vacation





# Economics and Management

## WHAT WILL YOU STUDY?

**This route gives you an insight into the economic and business environment, business practices and economics models. You will apply analytical models to examine and interpret the business environment together with government policies.**

You will discover the importance of accounting concepts to produce financial statements, and develop the knowledge to analyse the statements for the purpose of determining profitably.

This route will also introduce you to the study and analysis of problems and dynamics that shape political life and society.

You will learn about principles of business, microeconomics, macroeconomics, globalisation and accounting.

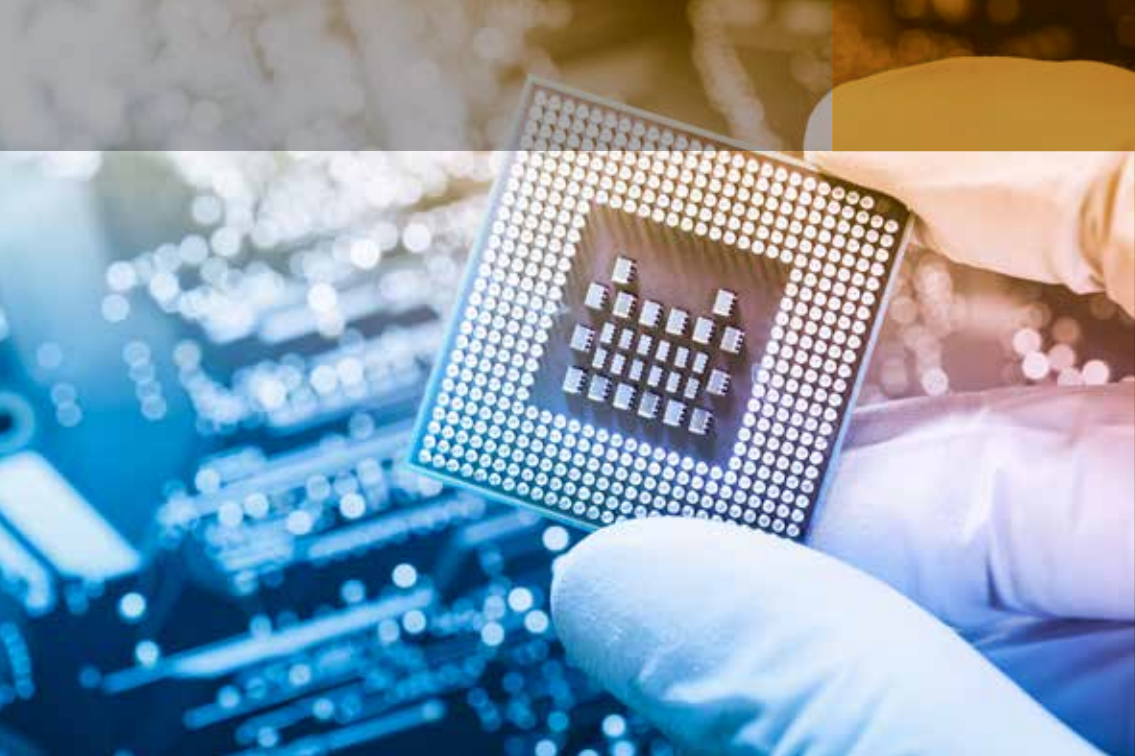
## MODULES

- Academic English Skills
- Business and the Modern Market Economy
- Core Mathematics\*
- Economics 1 and 2
- Globalisation and Global Issues
- Introduction to Financial Accountancy
- Project Study, including Computing Skills

\*All Economics and Management students will study the Core Mathematics module and take the final exam. However some students may wish to take the Pure Mathematics 1 final exam as well, to enable them to progress to some BSc degrees. Students will be offered extra support should they wish to do this.

“My foundation year has gone way beyond what I had imagined my year to be. The all-round holistic approach to study has changed my perception of education.”

**Jiayi from Singapore**  
Progressed to LLB Law



# Engineering and Technology

## WHAT WILL YOU STUDY?

**This route covers the links between pure mathematics and problem-solving in areas such as physics, engineering or finance.**

You will explore how to apply mathematical techniques to models and analyse practical problems, such as those involving forces and energy and more general rates of change.

You will also gain an understanding of fundamental areas of physics, including mechanics, electromagnetism, optics and gravitation.


## MODULES

- Academic English Skills
- Mechanics 1 and 2
- Physics 1 and 2
- Project Study, including Computing Skills
- Pure Mathematics 1 and 2

“The tutors are always there when you need help. They encourage students to focus on their studies and prepare them to face the exams.”

**Abdulkadir from Tanzania**

Progressed to BEng Aerospace Engineering



## 10th in the UK for Chemistry

Guardian University  
Guide 2018

# Science

### WHAT WILL YOU STUDY?

**This route helps you to gain an understanding of key areas of biology, including biological molecules, cellular structure, enzymes and immunity, as well as cardiovascular and respiratory systems.**

The modules introduce basic theoretical chemistry principles in areas like structures and bonding, and stimulate your appreciation of the social, environmental, economic and technological impact of chemistry on the community.

You will also enhance your associated laboratory skills throughout the course.

### MODULES

- Academic English Skills
- Biology 1 and 2
- Chemistry 1 and 2
- Further Studies in Biology and Chemistry
- Project Study, including Computing Skills
- Pure Mathematics 1

“The teachers are great. They are really friendly and approachable. They are willing to go that extra mile to make sure that you understood everything. They really helped me to strive for the best.”

**Justine from Philippines**

Progressed to BSc Medical Biochemistry



# Society and Culture

## WHAT WILL YOU STUDY?

**This route enables you to explore the relationships between society and culture.**

You will develop your knowledge of mass media and gain an understanding of the role of print and electronic media in society.

Society and Culture introduces you to the study and analysis of problems and dynamics that shape political life and society. You will learn about the institutions, procedures and traditions of English law and the legal system, and study how the law is applied and the constitutional context in which it operates.

This route also covers the principles of business, economics and globalisation.

## MODULES

- Academic English Skills
- Business and the Modern Market Economy
- Core Mathematics\*
- Economics 1
- Globalisation and Global Issues
- Law
- Media and Society
- Project Study, including Computing Skills

\*All Society and Culture students will study the Core Mathematics module and take the final exam. However some students may wish to take the Pure Mathematics 1 final exam as well, to enable them to progress to some BSc degrees. Students will be offered extra support should they wish to do this.

“The International Study Centre prepared me by offering a broad range of courses to give me a rich knowledge regarding different subjects.”

**Sisi from China**

Progressed to BA Media and Communication



# International Year One

The International Year One is designed to provide you with an intensive pathway to undergraduate study at the University of Leicester.

After you complete the programme and achieve the required grades, you will be able to progress to the second year of a Human Resource Management, Management Studies or Marketing.

AVAILABLE ROUTE:

- Management Studies

KEY FACTS

**Course length** Three-term

**Start dates** September or January

Entry requirements

**Academic:** Good high school graduation grades or equivalent academic study, plus up to one year of further study

**English language:** Academic IELTS for UKVI 5.5 (minimum 5.5 in writing)\*

**Age:** You must be at least 18 years old

\* If you do not need a Tier 4 visa, or are exempted in another way, we can accept equivalent proof of English.

“The facilities at the University of Leicester happen to be one of the best parts about studying here. The library is new and there are a lot of resource materials for our academic studies that are always available.”

**Ndaye from Nigeria**  
Progressed to BA Management Studies

STUDY PLAN OPTIONS

IELTS FOR UKVI	JUN	JUL	AUG	SEPT	OCT	NOV	DEC	JAN	FEB	MAR	APR	MAY	JUN	JUL	AUG	SEPT
5.5 (5.5 in writing)				●	●	●	●	●	●	●	●	●	●	●	●	Start the second year of your undergraduate degree
5.5 (5.5 in writing)								●	●	●	●	●	●	●	●	

● International Year One      ● Vacation





# Management Studies

## WHAT WILL YOU STUDY?

**Explore the importance of management in our fast-changing globalised world.**

You will engage with the contemporary challenges that businesses face, and acquire a range of skills that go beyond traditional business and management studies. Not only will you develop an understanding of the complex relations at stake within businesses and organisations, but also the wider social, political and environmental issues.

The route includes an introduction to principles of management, finance, economics and marketing.

## MODULES

- Academic English Skills
- Business Finance and Reporting
- Economy and Society
- Employment Relations
- Information Management
- Management Inquiry and Analysis
- Management Theory and Debate
- Principles of Marketing
- Work and Society

**Management Studies graduates have gone on to work at destinations such as:**  
**Deutsche Bank, IBM, JP Morgan, KPMG, PricewaterhouseCoopers, Procter and Gamble, The Bank of New York Mellon.**



# Popular progression degrees

## INTERNATIONAL FOUNDATION YEAR

**You can progress to the first year of your degree at the University of Leicester after you complete the International Foundation Year and achieve the required grades. Below are a selection of popular degrees listed alongside the recommended route for progression. Major/Minor degrees are also available.**

### ECONOMICS AND MANAGEMENT

Accounting BSc\*  
Accounting and Finance BSc\*  
Banking and Finance BA\*/BSc\*  
Business Economics BA\*/BSc\*  
Economics BA\*/BSc\*  
Economics and Accounting BA\*/BSc\*  
Financial Economics BA\*/BSc\*  
Human Resource Management BA\*  
Management Studies BA\*  
Marketing BA\*

### ENGINEERING AND TECHNOLOGY

Aerospace Engineering BEng/MEng  
Applied and Environmental Geology BSc\*/MGeol\*  
Computer Science BSc\*/MComp\*  
Electronic and Electrical Engineering BEng/MEng  
General Engineering BEng/ MEng  
Geology BSc\*/MGeol\*  
Geology with Geophysics BSc/MGeol  
Geology with Palaeontology BSc\*/MGeol\*  
Mathematics MMath/BSc  
Mathematics and Actuarial Science BSc  
Mechanical Engineering BEng/MEng  
Physics BSc/MPhys

Physics with Astrophysics BSc/MPhys  
Physics with Space Science BSc/MPhys  
Software Engineering BSc

### SCIENCE

Applied and Environmental Geology BSc\*/MGeol\*  
Biological Sciences BSc  
Biological Sciences (Biochemistry) BSc  
Biological Sciences (Genetics) BSc  
Biological Sciences (Microbiology) BSc  
Biological Sciences (Neuroscience) BSc  
Biological Sciences  
(Physiology with Pharmacology) BSc  
Biological Sciences (Zoology) BSc  
Chemistry BSc  
Chemistry with Forensic Science BSc/MChem  
Computer Science BSc\*/MComp\*  
Geology BSc\*/MGeol\*  
Geology with Palaeontology BSc\*/MGeol\*  
Medical Biochemistry BSc  
Medical Genetics BSc  
Medical Microbiology BSc  
Medical Physiology BSc  
Natural Sciences BSc\*  
Pharmaceutical Chemistry BSc/MChem  
Physical Geography BSc

### SOCIETY AND CULTURE

Archaeology BA\*  
Ancient History and Archaeology BA\*  
Ancient History and History BA\*  
Applied Psychology BSc\*  
Contemporary History BA\*  
Criminology BSc\*  
English and French Law LLB/Maitrise\*  
European Studies BA\*



Film and Media Studies BA\*  
 Film Studies BA\*  
 French and Italian BA\*  
 French and Spanish BA\*  
 Geography BA\*/BSc\*  
 History BA\*  
 History and American Studies BA\*  
 History and Archaeology BA\*  
 History and Politics BA\*  
 History of Art BA\*  
 Human Geography BA\*  
 International Relations BA\*  
 International Relations and History BA\*  
 Italian and Spanish BA\*  
 Law LLB\*  
 Law with a Modern Language LLB\*  
 Law with Criminology LLB\*  
 Law with Politics LLB\*  
 Media and Communication BA\*  
 Media and Society BA\*  
 Modern Language Studies BA\*^  
 Modern Languages with Film Studies BA\*^  
 Modern Languages with Management BA\*^  
 Modern Languages with/and Translation BA\*^  
 Politics BA\*  
 Politics and Economics BA\*  
 Politics and Sociology BA\*  
 Psychology BSc\*  
 Psychology with Cognitive Neuroscience BSc\*  
 Sociology BA\*

\*Alternative International Foundation Year routes are also suitable for progression to this degree

^Only available if you have studied modern languages at A-level

## INTERNATIONAL YEAR ONE

**You can progress to the second year of your degree at the University of Leicester after you complete the International Year One and achieve the required grades.**

## MANAGEMENT STUDIES

Human Resource Management BA  
 Management Studies BA  
 Marketing BA

The progression degrees are subject to change. For more information, including grades required and a full list of progression degrees, please visit [www.le.ac.uk/isc](http://www.le.ac.uk/isc)

# Your application

If you would like to apply to study at the University of Leicester International Study Centre, you will need to complete an application form and submit the relevant documentation.

You can either apply through your local education agent or directly via our website, **[www.le.ac.uk/isc](http://www.le.ac.uk/isc)**

If you are applying directly and have a question, then a Student Enrolment Adviser will be happy to help. They speak a variety of languages and understand several more.

**T:** + 44 (0) 1273 339333

## **STUDENT INSURANCE**

We strongly recommend that international students have the protection of personal insurance whilst in the UK. To cover you as a student at the International Study Centre, you may wish to purchase our "StudyCare Insurance Plus" insurance cover. This policy will cover you for loss of personal possessions, travel delay, as well as providing medical insurance until the end of your International Study Centre academic programme. You can purchase StudyCare Insurance Plus as part of the application process. If you prefer, you may take out insurance cover with another provider.





## DISCLAIMER

This prospectus is issued for the general guidance of students considering entry to the University of Leicester International Study Centre from September 2018. The information is correct at the time of going to press and the programmes and services described herein are those which Study Group is planning to offer. We make every effort to ensure that the content of our prospectus, website and other materials is accurate. However, on occasion it may be necessary to alter certain aspects of a module or programme, for example if changes are required to meet external requirements; or if programmes are over-subscribed and the quality of teaching would be adversely affected as a result.

In such circumstances we may have to alter the timetable, change the teaching location of the programme or, in extreme cases, cancel or substantially amend the content of the programme. Should any of these changes become necessary, we will give you as much notice as possible before they come into effect and ensure that any disruption to your studies is minimised.

If your programme is cancelled, we will work in consultation with you to offer a suitable alternative, subject to meeting the admission requirements for that programme or the opportunity to obtain a refund of any advance payments you have made for the programme. The alternative programme may not be at the same International Study Centre as the original offer.

Study Group reserves the right, where applicable, to amend the regulations governing programmes at University of Leicester International Study Centre. We therefore strongly recommend that immediately prior to making any application to - or accepting any offer from - us, you refer to the most up-to-date version of the programme descriptions and specifications and the regulations on University of Leicester International Study Centre website.

Neither the University nor Study Group shall be liable for any errors or omissions that may be contained in this prospectus.



28784.03.18

## CONTACT DETAILS

To apply, or for further information, please contact:

**University of Leicester  
International Study Centre  
Admissions Centre**

1 Billinton Way  
Brighton  
BN1 4LF  
United Kingdom

**T: +44 (0) 1273 339333**

**[www.le.ac.uk/isc](http://www.le.ac.uk/isc)**

**[facebook.com/iscleicester](https://www.facebook.com/iscleicester)**

**[twitter.com/leicesterisc](https://twitter.com/leicesterisc)**

**[youtube.com/iscleicester](https://www.youtube.com/iscleicester)**

The International Study Centre programmes are provided by Study Group in collaboration with the University of Leicester.

Programmes at the International Study Centre are delivered by Study Group.

Study Group is a global leader in preparing students for international academic success and rewarding careers through a life-changing learning experience.

We offer customised programmes across higher and language education starting from high school to lifelong learning. Study Group taught more than 60,000 students from more than 150 countries across the UK, Europe, USA, Canada, Australia and New Zealand in 2017.

**For more information, please visit [studygroup.com](http://studygroup.com)**



