

University of  
HUDDERSFIELD



# International Study Centre



# AWARDED GOLD



By the Teaching  
Excellence Framework

## BEST STUDENT EXPERIENCE

\*Ranked 5th in the world and 3rd in the UK,  
International Student Barometer, 2015

## PROFESSIONALLY QUALIFIED TEACHING STAFF

\*1st in England,  
Higher Education Funding Council for England, 2016

## TOP FOR WORK PLACEMENT

\*Top 10 for paid work placements in England,  
Higher Education Statistics Agency, 2013/14

## EMPLOYABLE GRADUATES

\*Featured in QS Graduate Employability Rankings, 2016







Creative Arts Building



Campus and canal



# Welcome to the University of Huddersfield

**As an international student, you can be confident that your time at the International Study Centre is the beginning of your journey towards a successful career. Our courses will prepare you for the challenges of degree-level study and give you the academic knowledge and English language skills to succeed at the University of Huddersfield.**

“

I am privileged to be the Chancellor of the University of Huddersfield. This is a dynamic University, one where I have been a regular visitor for many years, working on a number of projects that go to the core of this University's objectives and origins. When facing the decision of which university to join I can think of no better university where, from personal knowledge and experience, you will benefit from a combination of academic experiences and the development of relevant employability skills, giving you the best preparation for the world of work. I shall be continuing the tradition of the Chancellor of the University of Huddersfield, where students are at the centre of all our thinking.

**HRH The Duke of York,  
KG Chancellor**



“

The University of Huddersfield is a great place to study and a great place to live. As an alumna, I feel fortunate to share my own experience at Huddersfield with new students like you.

Your journey starts with us at the International Study Centre, where you will be welcomed into a supportive environment. Our staff are experts who take pride in providing an outstanding experience. We will help you adapt to life in the UK, develop key employability skills and take the first steps towards your successful future.

We look forward to meeting you and working together to achieve your goals.

**Linda McKeon, Head of Centre**



## Contents

|   |    |
|---|----|
| Why the University of Huddersfield?                       | 6  |
| See yourself in Huddersfield                              | 8  |
| Insights into industry                                    | 10 |
| Developing your potential                                 | 12 |
| The University of Huddersfield International Study Centre | 14 |
| International Foundation Year                             | 16 |
| International Year One                                    | 22 |
| Extended International Year One                           | 26 |
| Pre-Master's  | 30 |
| What's on campus?   | 34 |
| Specialist advisors for international students            | 36 |
| Supportive learning                                       | 38 |
| Accommodation   | 40 |
| Apply to us   | 42 |



# Why the University of Huddersfield?

**Huddersfield is a modern, successful and innovative university with a great reputation for helping students succeed in their chosen career.**

## Focus on your career

The University of Huddersfield is among the UK's top providers of work placement courses and knows exactly how to prepare students for successful careers and a great future. Most courses offer professional work placement opportunities, giving you a rounded learning experience and helping you stand out to future employers.

## Learn from the best

The University has highly qualified teachers and was awarded gold in the Teaching Excellence Framework (TEF), 2017. Every single member of the teaching staff is a Fellow of the Higher Education Academy (a national organisation that marks Britain's best lecturers) and they are passionate about helping you succeed.

## Enjoy the experience

The University is located in the centre of the thriving West Yorkshire town of Huddersfield and is ranked in the top five in the UK for student experience.\*

Perfect for students, Huddersfield also offers a lower cost of living compared with the UK's major cities and has lots of cafés, shops and restaurants for meeting friends.

\*International Student Barometer, 2015

***Awarded 88% student satisfaction score in the National Student Survey, 2015.***



“

I wanted to study in the UK because the engineering equipment at the University of Huddersfield is better and you get more experience. There are more international students in the UK. I hope this will give me more international, critical thinking and will improve my English. The only thing that surprised me about the UK is the happiness. I always drink coffee on a Sunday and when I go to sit and drink I saw people smiling. I see that people here are so happy.

**Leslie, China**

International Year One in Engineering

.....  
**5 STARS  
FOR TEACHING**

QS World University Rankings, 2018



“

Huddersfield is amazing. Some people think it is a bit quiet, but it is great for students. I can easily go out in Manchester or Liverpool and then when I want to rest I stay here and study. It is the perfect place for students. Everywhere is cool.

**Beyza, Turkey**  
International Foundation Year  
in Creative Arts



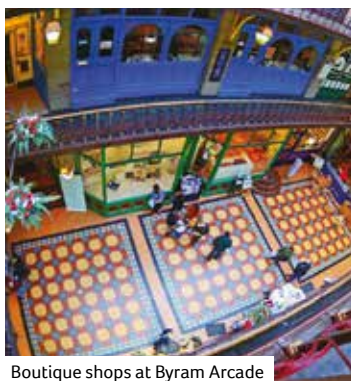
Castle Hill



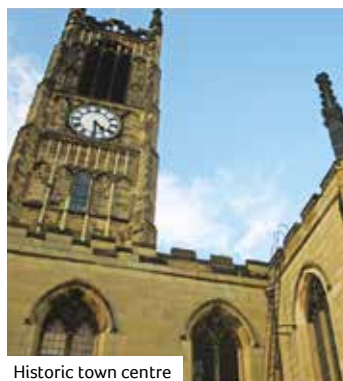
Lawrence Batley Theatre



Tour de France in Huddersfield in 2014



Boutique shops at Byram Arcade



Historic town centre



Yorkshire Dales National Park

# See yourself in Huddersfield

**There is more to this historic Yorkshire town than you might think. Mountainous countryside, industrial history and a thriving town centre are waiting to be discovered.**

## Entertainment and culture

A theatre for local arts and an extensive range of new shops, cafés, bars and restaurants provide plenty of entertainment. Huddersfield hosts an annual food and drink festival and the Tour de France even cycled through the town in 2014. Huddersfield Town football club is in the English Championship league and has a 30,000-seat stadium close to the University.

## Industrial history

The town has a long industrial history, some of which still remains today. Taylor and Lodge, one of the oldest wool manufacturers in Huddersfield, is still producing high volumes of wool. The company even provided material for the Royal Wedding of Kate Middleton and Prince William in 2011.

## Breathtaking scenery

Explore the nearby areas of outstanding natural beauty, with the Yorkshire Dales to the north and the Peak District to the south. Wharfedale is the highest peak in the Dales and offers spectacular views of England.

## Explore the big cities

The major cities of Leeds and Manchester are less than 30 minutes away by train, so you can access the best features of big city life while living in a friendly and welcoming town. Even historic York, famous for the War of the Roses, can be reached in just 50 minutes by train. The train journey time to London is 2 hours and 40 minutes and to Manchester Airport 55 minutes.



***If you don't know  
Huddersfield and are  
thinking of studying here,  
check out #ExploreHud  
on Instagram.***



# Insights into industry

**Degree courses at the University offer industry placements to develop your skills in the real world, and help you become a confident and employable graduate.**

## Top 10 in England for work placements\*

The University of Huddersfield is among the UK's top providers of 'sandwich' courses, which are developed in conjunction with global employers and industry.

During a 'sandwich' course, you may have the opportunity to undertake a 12-month paid work placement as part of your degree – many of our students return from their placement with a sponsorship and the offer of a permanent job from their host company after graduation.

\*Higher Education Statistics Agency, 2013/14

## 5 STARS FOR EMPLOYABILITY

QS World University Rankings, 2018



“

The University encourages people to participate in a lot of programmes but I never thought I would be a person who would do these things. Then I did four placements in one year in different countries. I didn't expect myself to be as involved as I was, but the environment pushed me to do more for myself and experience new things.

### Yasmeen, Bahrain

International Foundation Year in Business, Law and Social Studies  
Graduated with Advertising and Marketing Communications BA(Hons)  
Achieved a Silver Placement Award for completing placement programmes at Legendpapi, Bahrain;  
London Business Conference Group, London; Placement International, Barcelona; Radeya Career Services, Dubai



“

Studying at the International Study Centre has helped me a lot with my academic skills. For my work placement, it helps me a lot for my future career because I explored most of the IT area. It was a mix of many roles within one department and that has really enhanced my future career.

### Mohammed, Saudi Arabia

International Foundation Year in Business, Law and Social Studies  
Graduated with Information and Communication Technology BSc(Hons)  
Completed placement programme at Kirklees Council, UK



“

I've learned so much about team working and communication. Everyday you need to communicate to other people and get your message heard by other people, at the same time whilst hearing them. I think most of these skills I've actually improved, and my acumen and my knowledge and experience has just increased.

### Mduduzi, Zimbabwe

International Foundation Year in Business, Law and Social Studies  
Graduated with Logistics and Supply Chain Management BSc(Hons)  
Completed placement programme at Airbus Helicopters, Germany



“

There is a huge difference studying in the UK to back home. No matter what course you want to study, I feel like there are more opportunities here. You can get a work placement, or you can get enough experience before you begin your actual job. Even the lab works we are doing here are really serious. I don't think I would have had so much exposure back home.

#### Ruth, Nigeria

International Foundation Year in Engineering, Computing and Science  
Now studying Medical Biochemistry BSc(Hons)



Specialist facilities



Supported to succeed



Work placements in leading industry



Learn alongside international students

# Developing your potential

**The University of Huddersfield is dedicated to teaching excellence and is focused on helping students reach their full potential.**

Practical hands-on learning, specialist international support and highly qualified teachers will prepare you for your future career and beyond.

#### **Awarded Gold in the Teaching Excellence Framework\***

University staff have expertise across an impressive range of disciplines and are well known for their commitment to innovation, entrepreneurship and knowledge exchange.

#### **International Learning Support Programme**

A specialist team at the University helps international students adapt to life in Huddersfield and leave with the best possible degrees. With dedicated support, guidance and resources we will help you achieve success.

#### **The Duke of York Young Entrepreneur Centre**

Officially opened by HRH The Duke of York in 2013, this centre provides excellent facilities for developing your business ideas within a professional environment. The centre is home to the Enterprise Team who offer one-to-one business advice and free workshops.

***Over 130 students and businesses signed up to the Duke of York Young Entrepreneur Centre over the last two years.***

\*Teaching Excellence Framework, 2017





Student Central



Make new friends



Practical experience in leading facilities



Best student experience



Develop your employability

University of Huddersfield

# International Study Centre

**Whether you are interested in creative arts, computing, engineering or business, there is a course at the International Study Centre to suit you.**

## Preparation for success

Preparing for university is one of the most important things any student has to do. As a student at the International Study Centre you will learn the academic and English language skills you need to be successful on your chosen degree at the University of Huddersfield.

## Your first day on the University campus

You are a student of the University from the very first day you join us at the International Study Centre. You will study and learn on campus, and have full access to University facilities such as the library, sports hall and Students' Union.

## Welcoming students from around the world

Being an international student means you are part of a wide community of different nationalities. We know how to help you adjust to your new environment and make the most of your time in the UK.

## Experience university-style teaching

We will introduce you to the style of teaching that you will experience at the University. Taking part in tutorials, seminar-style classes and larger group lectures means you'll be well prepared once you progress to your degree.

## Employability skills

All courses at the International Study Centre have an integrated careers and employability element called CareerAhead. You will develop key skills, create a personal development plan and build your CV in preparation for achieving your career goals.

## Progression to your chosen degree

Joining the International Study Centre guarantees that you will receive a conditional offer of a degree place at the University of Huddersfield. Once you successfully complete your course, and meet the required entry standards, you will proceed to study your chosen degree.

## Making the most of your time with us

You can take advantage of an exciting range of academic and social activities while you are studying here. Over recent years our students have visited York, Paris, Berlin, London, the Lake District and Alton Towers. We will ensure that you have the opportunity to apply your learning to real-world situations, make friends for life and enjoy your time as a Huddersfield student.

.....

**5 STARS  
FOR INTERNATIONALISATION**

QS World University Rankings, 2018





“

The teaching standard is very different from back home. It's more practical here, and you have presentations and practical classes. I want to study Hospitality Business Management. In Bangladesh hospitality is a very new subject, so it's not as developed. Whereas it's been here for a longer period of time, so I think studying here will be better because the teachers are more experienced and I can gain more knowledge.

### Sanjida, Bangladesh

International Foundation Year in Business and Law, Hospitality and Tourism, Management, Marketing, Transport and Logistics  
Progressed to: Hospitality Business Management BA(Hons)



# International Foundation Year

**A three-term programme of academic subjects, study skills and English language and career support, preparing you for the first year of undergraduate study at the University.**

The International Foundation Year will prepare you for undergraduate study in subject areas including Business, Law, Social Studies, Engineering, Computing, Science and Creative Arts. You will develop your core Maths, English communication and critical thinking skills, as well as study skills to ensure you will have the confidence and knowledge to start your degree.

## Study structure

You can choose from these routes:

- Business and Law, Hospitality and Tourism, Management, Marketing, Transport and Logistics
- Creative Arts
- Computing, Engineering and Science
- Social and Behavioural Sciences

All routes are modular in structure, with core modules common to each route, and subject-specific modules, carefully designed to focus on the academic area most useful to your chosen degree.

## Progression to your degree

Once you successfully complete the programme, and achieve the required grades, you will join your chosen undergraduate degree at the University.

## Key facts

**Courses start:**

September or January.

**Course length:**

**Three terms:**

September to June or January to August.

## Assessment

**End of module/term assessments:** a combination of examinations and assessments of coursework, presentations and extended essays. Art and Design students will also complete practical work.

**Continuous coursework:** mixture of lecture classes, small group seminar work and directed self-study assessment.

## Entry requirements

**Academic:** Good high school graduation grades or equivalent.

**English language:** Academic IELTS for UKVI 4.5 (minimum of 4.0 in writing)\*

**Age on entry:** 17 years of age or above in the September or October of the academic year you wish to study at the International Study Centre.

## English Language Preparation

If you don't meet the requirements, you can take additional language training before your International Foundation Year. If you have an Academic IELTS for UKVI of 4.0 (minimum 4.0 in all skills)\* you can take one term of English Language Preparation prior to starting your programme. If you have an Academic IELTS for UKVI of 3.5\* you can take two terms.

For more information about modules, term dates, country-specific entry requirements and tuition fees, visit [hud.ac.uk/isc](http://hud.ac.uk/isc)

## Study plan options

| Overall IELTS*          | Apr | Jun | Sept | Jan | Apr | Jun | Sept |
|-------------------------|-----|-----|------|-----|-----|-----|------|
| 4.5 (4.0 in writing)    |     |     |      |     |     |     |      |
| 4.5 (4.0 in writing)    |     |     |      |     |     |     |      |
| 4.0 (4.0 in all skills) |     |     |      |     |     |     |      |
| 4.0 (4.0 in all skills) |     |     |      |     |     |     |      |
| 3.5 (3.5 in all skills) |     |     |      |     |     |     |      |
| 3.5 (3.5 in all skills) |     |     |      |     |     |     |      |

■ International Foundation Year ■ English Language Preparation ■ Vacation

\*If you do not need a Tier 4 visa, or are exempted in another way, we can accept equivalent proof of English

# International Foundation Year

## Business, Hospitality, Law, Management, Marketing, Transport and Logistics

This programme will develop your core Maths, English communication and critical thinking, as well as study skills to ensure you will have the confidence and knowledge to start your degree. Specific modules in business and law will provide you with an in-depth overview on the key economic, financial and legal forces at play, to inform you of how businesses develop and adapt in a rapidly changing environment.

### Modules

- Academic English Skills
- Core Mathematics
- Personal Learning and Critical Thinking Skills (PLTS)
- The Competitive Business Environment
- Investigating Business
- Legal and Financial Environment

### Leads to the first year of an undergraduate degree in:

|  |
|--|
| Accountancy BA(Hons)   |
| Accountancy and Finance BA(Hons)                                     |
| Accountancy with Financial Services BA(Hons)                         |
| Advertising and Marketing Communications BA(Hons)                    |
| Air Transport and Logistics Management BSc(Hons)                     |
| Behavioural Sciences BSc(Hons)                                       |
| Business and Human Resource Management BA(Hons)                      |
| Business Management BA(Hons)   |
| Business Management and Leadership BA(Hons)                          |
| Business Management with Finance BA(Hons)                            |
| Business Studies with Financial Services BA(Hons)                    |
| Childhood Studies BA(Hons)   |
| Construction Project Management BSc(Hons)                            |
| Criminology BSc(Hons)  |
| Economics BSc(Hons)  |
| Economics and Politics BSc(Hons)                                     |
| Events Management BA(Hons)   |
| Hospitality Business Management BA(Hons)                             |
| Hospitality Business Management with a Modern Language BA(Hons)      |
| International Business BA(Hons)                                      |
| International Politics BSc(Hons)                                     |
| Law (Exempting) Master of Law and Practice (MLP), inc. LLB LLB(Hons) |
| Business Law LLB (Hons)  |
| Marketing BA(Hons)   |
| Marketing with Public Relations BA(Hons)                             |
| Politics BSc(Hons)   |
| Politics and Criminology BSc(Hons)                                   |
| Politics with Sociology BSc(Hons)                                    |
| Psychology BSc(Hons)   |

|  |
|--|
| Psychology with Counselling BSc(Hons)        |
| Psychology with Criminology BSc(Hons)        |
| Religion and Education BA(Hons)              |
| Sociology BSc(Hons)                          |
| Sociology and Criminology BSc(Hons)          |
| Sociology and Psychology BSc(Hons)           |
| Supply Chain Management BSc(Hons)            |
| Surveying (Building) BSc (Hons)              |
| Surveying (Quantity) BSc (Hons)              |
| Transport and Logistics Management BSc(Hons) |
| Travel and Tourism Management BA(Hons)       |
| Youth and Community Work BA(Hons)            |

These degrees are subject to change. For an up-to-date list and details of progression grades required, visit [hud.ac.uk/isc](http://hud.ac.uk/isc)

# International Foundation Year

## Creative Arts

This programme will introduce you to a range of materials and develop your confidence in techniques such as drawing and project evaluation. You will also research and develop ideas and learn about Art and Design History to understand the subject in a historic context.

### Modules

- Academic English Skills
- Core Mathematics
- Personal Learning and Critical Thinking Skills (PLTS)
- Pure Mathematics\*
- Art and Design History
- Drawing
- Visual and Perceptual Studies

\* Architecture students only

### Leads to the first year of an undergraduate degree in:

|  |
|--|
| Architecture/Architecture (International) (RIBA Part 1) BA(Hons) |
| Computer Games Design BA(Hons)                                   |
| Contemporary Art and Illustration BA(Hons)                       |
| Costume with Textiles BA(Hons)                                   |
| Fashion and Textiles Buying Management BA(Hons)                  |
| Graphic Design and Animation BA(Hons)                            |
| Interior Design BA(Hons)   |
| Photography BA(Hons)   |
| Product Design BA(Hons)  |
| Textile Practice BA/BSc(Hons)                                    |

These degrees are subject to change. For an up-to-date list and details of progression grades required, visit [hud.ac.uk/isc](http://hud.ac.uk/isc)

\*Students progressing to a degree in Architecture will take Pure Mathematics rather than Core Mathematics  
\*\*Requires portfolio at the end of the course



# International Foundation Year Computing, Engineering and Science

Study subject-specific modules relating to your specialisation, with access to a range of progression degrees. Depending on your chosen degree focus you will study a combination of subject areas. For example, students progressing to Engineering need to take Applied Maths 1 & 2 modules; students progressing to Computing Science will need to take Applied Maths 1 and Computing modules; and those progressing to Science need to take Biology and Chemistry.

## Modules

- Academic English Skills
- Personal Learning and Critical Thinking Skills (PLTS)
- Physics
- Pure Mathematics
- Applied Maths 1
- Applied Maths 2
- Biology
- Chemistry
- Computing

## Leads to the first year of an undergraduate degree in:

Automotive and Motorsport Engineering BEng/MEng(Hons)  
Biochemistry BSc(Hons)  
Biology (Molecular and Cellular) BSc(Hons)  
Biomedicine BSc(Hons)  
Chemical Engineering BEng/MEng(Hons)  
Chemical Engineering and Chemistry BSc(Hons)  
Chemistry BSc(Hons)  
Chemistry with Chemical Engineering BSc(Hons)  
Chemistry with Forensic Science BSc(Hons)  
Chemistry with Industrial Experience MChem(Hons)  
Computer Games Programming BSc(Hons)  
Computer Systems Engineering BEng(Hons)  
Computing BSc(Hons)  
Computing Science BSc(Hons)  
Construction Project Management BSc(Hons)

Electronic and Communication Engineering BEng(Hons)  
Electronic and Electrical Engineering BEng(Hons)  
Electronic Engineering BEng/MEng(Hons)  
Electronic Engineering and Computer Systems BEng(Hons)  
Energy Engineering BEng/MEng(Hons)  
Exercise Science BSc(Hons)  
Forensic and Analytical Science BSc(Hons)  
Information Technology BSc (Hons)  
Mechanical Engineering BEng/MEng(Hons)  
Medical Biochemistry BSc(Hons)  
Medical Biology BSc(Hons)  
Medical Genetics BSc(Hons)  
Music Technology and Audio Systems BSc(Hons)  
Pharmaceutical Chemistry BSc(Hons)  
Pharmacology BSc(Hons)  
Pharmacy MPharm(Hons)  
Software Engineering MEng(Hons)  
Sport Science BSc(Hons)  
Sport, Exercise & Nutrition BSc(Hons)  
Surveying BSc(Hons)  
Surveying (Building Surveying) BSc(Hons)  
Surveying (Quantity Surveying) BSc(Hons)

\*Students choosing degrees in the Computing pathway will take the Physics module and not Applied Maths 2  
These degrees are subject to change. For an up-to-date list and details of progression grades required, visit [hud.ac.uk/isc](http://hud.ac.uk/isc)

# International Foundation Year Social and Behavioural Sciences

This programme will prepare you for a degree in the fields of business, politics and criminology. Business and law specific modules will provide you with an in-depth overview of how businesses develop and adapt in a rapidly changing environment.

## Modules

- Academic English Skills
- Core Mathematics
- Personal Learning and Critical Thinking Skills (PLTS)
- The Competitive Business Environment
- Investigating Business
- Legal and Financial Environment

## Leads to the first year of an undergraduate degree in:

Accountancy BA(Hons)  
Accountancy and Finance BA(Hons)  
Accountancy with Financial Services BA(Hons)  
Advertising and Marketing Communications BA(Hons)  
Air Transport and Logistics Management BSc(Hons)  
Behavioural Sciences BSc(Hons)  
Business and Human Resource Management BA(Hons)  
Business Law LLB (Hons)  
Business Management BA(Hons)  
Business Management and Leadership BA(Hons)  
Business Management with Finance BA(Hons)  
Business Studies with Financial Services BA(Hons)  
Childhood Studies BA(Hons)  
Criminology BSc(Hons)  
Events Management BA(Hons)  
Hospitality Business Management BA(Hons)  
Hospitality Business Management with a Modern Language BA(Hons)  
International Business BA(Hons)

International Politics BSc(Hons)  
Law (Exempting) Master of Law and Practice (MLP), inc. LLB LLB(Hons)  
Marketing BA(Hons)  
Marketing with Public Relations BA(Hons)  
Politics BSc(Hons)  
Politics and Criminology BSc(Hons)  
Politics with Sociology BSc(Hons)  
Psychology BSc(Hons)  
Psychology with Counselling BSc(Hons)  
Psychology with Criminology BSc(Hons)  
Religion and Education BA(Hons)  
Sociology BSc(Hons)  
Sociology and Criminology BSc(Hons)  
Sociology and Psychology BSc(Hons)  
Supply Chain Management BSc(Hons)  
TESOL and Education BA(Hons)  
Transport and Logistics Management BSc(Hons)  
Travel and Tourism Management BA(Hons)  
Youth and Community Work BA(Hons)

\*Students are required to achieve 50% overall in Academic English Skills with a minimum of 50% in writing  
These degrees are subject to change. For an up-to-date list and details of progression grades required, visit [hud.ac.uk/isc](http://hud.ac.uk/isc)



# International Year One

**An intensive three-term programme of academic subjects, study skills and English language and career support, preparing you for the second year of your undergraduate degree.**

The International Year One is designed for international students who are overqualified to study the International Foundation Year but underqualified for direct entry to the first year of an undergraduate degree. You will develop your English communication and a range of learning and study skills; including, writing and reading strategies, presentation and seminar participation material and time management. When you have completed the programme, you will progress to the second year of your university degree with the confidence, knowledge and essential skills needed to succeed.

### Study structure

- You can choose from two routes:
- Business, Management and Marketing
  - Engineering

All routes are modular in structure, with core modules common to each route and subject specific modules designed to focus on the academic area most useful to your chosen degree.

### Progression to your degree

Once you successfully complete the programme, and achieve the required grades, you will join the second year of your chosen undergraduate degree at the University.

### Key facts

- Courses start:** September or January.
- Course length:** **Three terms:** September to June or January to August.

### Entry requirements

- Academic:** Good high school graduation grades or equivalent.
- English language:** Academic IELTS for UKVI 5.0 (minimum of 5.0 in writing).\*
- Age:** 18 years of age or above.

### English Language Preparation

If you don't meet the requirements, you can take additional language training before your International Year One. If you have an Academic IELTS for UKVI of 4.5 (minimum 4.5 in all skills)\*, you can take one term of English Language Preparation prior to starting your programme. If you have an Academic IELTS for UKVI of 4.0 (minimum 4.0 in writing)\* you can take two terms.

For more information, including term dates, country-specific entry requirements, course updates and tuition fees, visit [hud.ac.uk/isc](http://hud.ac.uk/isc)

### Study plan options

| Overall IELTS*       | Apr | Jun | Sept | Jan | Apr | Jun | Sept  |
|----------------------|-----|-----|------|-----|-----|-----|---|
| 5.0 (5.0 in writing) |     |     |      |     |     |     | Start the second year of your undergraduate degree at the University. |
| 5.0 (5.0 in writing) |     |     |      |     |     |     |   |
| 4.5 (4.5 in writing) |     |     |      |     |     |     |   |
| 4.5 (4.5 in writing) |     |     |      |     |     |     |   |
| 4.0 (4.0 in writing) |     |     |      |     |     |     |   |
| 4.0 (4.0 in writing) |     |     |      |     |     |     |   |

■ International Year One 
 ■ English Language Preparation 
 ■ Vacation

\*If you do not need a Tier 4 visa, or are exempted in another way, we can accept equivalent proof of English



# International Year One Business, Management and Marketing

This programme gives you access to a wide range of progression degrees in Business, Management and Marketing. Depending on the area you wish to specialise in, you will study a combination of subject areas from the business, management or marketing specific modules which will provide you with an in-depth overview of how business, market and organisations operate in the context of key financial and legal frameworks. The modules will also equip you with the confidence and knowledge to develop an understanding of marketing and branding theory as well as practice.

## Modules

- Academic English Skills
- Financial Environment
- Legal Environment
- Markets and Marketing

## Subject-specific modules

For Business Studies or Business Management degrees:

- Organisational Behaviour
- For Marketing degrees:
  - Practical Marketing and Branding Project

## Leads to the second year of an undergraduate degree in:

|   |       |
|---|-------|
| <b>Business Studies</b>                                 | ..... |
| International Business BA(Hons)                         | ..... |
| <b>Business Management</b>                              | ..... |
| Business and Human Resource Management BA(Hons)         | ..... |
| Business Management BA(Hons)                            | ..... |
| Business Management and Leadership BA(Hons)             | ..... |
| Business Studies with Environmental Management BA(Hons) | ..... |
| Fashion and Textile Buying Management BA(Hons)          | ..... |
| Supply Chain Management BSc(Hons)                       | ..... |
| <b>Marketing</b>  | ..... |
| Marketing BA(Hons)                                      | ..... |

These degrees are subject to change. For an up-to-date list and details of progression grades required, visit [hud.ac.uk/isc](http://hud.ac.uk/isc)

# International Year One Engineering

This programme gives you access to a wide range of progression degrees in Mechanical and Electrical and Electronic Engineering. Depending on the area you wish to specialise in, you will study a combination of subject areas. For example, students following degrees in Mechanical Engineering will be introduced to the principles of mechanical science, electromechanical systems and essential properties of various materials. A practical workshop on manufacturing technology is also part of the curriculum. For those pursuing degrees in Electrical and Electronic Engineering, an introduction to electrical principles is covered as well as basic electronics, the laws as well as practical electronics such as different types of circuits and counters. Software design and development is also included.

## Modules

- Academic English Skills
- The Professional Engineer

## Subject-specific modules

For Mechanical Engineering degrees:

- Maths 1
- Mechanical Science
- Engineering Communications and Materials
- Electromechanical Systems
- Manufacturing Technology and Workshop Appreciation

For Electrical and Electronic Engineering degrees:

- Maths 1 & 2
- Computing
- Electrical Principles
- Electronics

## Leads to the second year of an undergraduate degree in:

|  |       |
|--|-------|
| <b>Engineering</b>                                     | ..... |
| Automotive and Motorsport Engineering BEng/MEng(Hons)  | ..... |
| Computer Systems Engineering BEng(Hons)                | ..... |
| Electronic and Communication Engineering BEng(Hons)    | ..... |
| Electronic and Electrical Engineering BEng(Hons)       | ..... |
| Electronic Engineering BEng/MEng(Hons)                 | ..... |
| Electronic Engineering and Computer Systems BEng(Hons) | ..... |
| Mechanical Engineering BEng/MEng(Hons)                 | ..... |

These degrees are subject to change. For an up-to-date list and details of progression grades required, visit [hud.ac.uk/isc](http://hud.ac.uk/isc)



# Extended International Year One

A four-term programme of English language skills and academic subjects which will give you the extra support needed to succeed when you progress to year two of your undergraduate degree.

The Extended International Year One is designed for students who are overqualified for the International Foundation Year, but underqualified for the International Year One, and may have exceeded their two years of pre-undergraduate study. With the additional term you will develop your skills, preparing you for entry to the second year of your chosen undergraduate degree.

You will receive a combined visa for the full four years of study, which includes an optional placement year if required.

### Study structure

The subject route is Business, Management and Marketing.

This route is modular in structure, with core modules and subject-specific modules designed to focus on the academic area most useful to your chosen degree.

### Progression to your degree

Once you successfully complete the programme and achieve the required grades, you will join the second year of your chosen undergraduate degree at the University.

### Key facts

- Courses start:** October.
- Course length:** Four terms: October to August.

### Entry requirements

- Academic:** Good high school graduation grades or equivalent.
- English language:** Academic IELTS for UKVI 5.5\*
- Age:** 17 years of age or above.

For more information, including term dates, country-specific entry requirements, course updates and tuition fees, visit [hud.ac.uk/isc](http://hud.ac.uk/isc)

\*You will be issued with a University of Huddersfield CAS (Visa Sponsor) for the full duration of your studies (Extended International Year One plus three years at the University, covering an optional placement year if required), which will require you to have the equivalent of a minimum Academic IELTS for UKVI of 5.5 with no individual score below 5.5.

### Study plan options

| Overall IELTS*                      | Oct | Jan | Apr | Jun | Sept  |
|-------------------------------------|-----|-----|-----|-----|---|
| 5.5 (minimum 5.5 in all components) |     |     |     |     | Start the second year of your undergraduate degree at the University. |

■ Extended International Year One





Extended  
International Year One  
Business, Management  
and Marketing

This programme gives you access to a wide range of progression degrees in Business, Management and Marketing. Depending on the area you wish to specialise in, you will study a combination of subject areas from the business, management or marketing specific modules which will provide you with an in-depth overview of how business, market and organisations operate in the context of key financial and legal frameworks. The modules will also equip you with the confidence and knowledge to develop an understanding of marketing and branding theory as well as practice.

Modules

- Business Builder English Language Extension
- Business Builder Academic Extension

Subject-specific modules

For Business Studies or Business Management degrees:

- Organisational Behaviour
- For Marketing degrees:
- Practical Marketing and Branding Project

Leads to the second year of an undergraduate degree in:

|   |       |
|---|-------|
| <b>Business Studies</b>                                 | ..... |
| International Business BA(Hons)                         | ..... |
| <b>Business Management</b>                              | ..... |
| Business and Human Resource Management BA(Hons)         | ..... |
| Business Management BA(Hons)                            | ..... |
| Business Management and Leadership BA(Hons)             | ..... |
| Business Studies with Environmental Management BA(Hons) | ..... |
| Fashion and Textile Buying Management BA(Hons)          | ..... |
| Supply Chain Management BSc(Hons)                       | ..... |
| <b>Marketing</b>  | ..... |
| Marketing BA(Hons)                                      | ..... |

These degrees are subject to change. For an up-to-date list and details of progression grades required, visit [hud.ac.uk/isc](http://hud.ac.uk/isc)







“

I get to meet so many international friends from other countries, so I learn all about their cultures and learn to live in a diverse community. It's good for me as I can practise my English with friends. The course is also very good. The teachers are very supportive and they always take my opinion and give good advice. It's helping me to understand more about my master's later and learn more management and business for fashion design. Later on I want to work for fashion magazines or as a fashion buyer.

**Elisabeth, Indonesia**  
Pre-Master's in Art and Design



# Pre-Master's

By choosing this two-term programme, you will gain the specialist academic and English language support you need to succeed in your Master's degree at the University.

The Pre-Master's is a two-term programme for international students ready to pursue a graduate degree. You will develop your academic knowledge, critical thinking skills and English language communication in a programme designed to prepare you with the confidence, knowledge and essential skills needed for progression to a range of Master's degrees at the University.

### Study structure

You can choose between two routes:

- Art and Design
- Business

All routes are modular in structure with core modules common to each route, and route-specific modules designed to focus on the academic area most useful to your chosen degree.

### Progression to your Master's degree

Once you successfully complete the programme, and achieve the required grades, you will be fully prepared for studying your postgraduate degree at the University. You will gain:

- A range of academic and learning skills.
- The ability to adapt to a new cultural environment and thrive academically.
- The right academic qualifications and a substantial understanding of the subject.
- The ability to use English in the academic environment to a high standard.

### Key facts

**Courses start:**

**Art and Design route:** April.

**Business route:** January, April or August

**Course length:**

**Two terms:** January to June, April to August or August to December.

### Entry requirements

**Academic:** Recognised higher/advanced diploma in a related subject area; recognised degree in related field.

**English language:** Academic IELTS for UKVI 5.5 (with 5.5 in all skills) or equivalent.\*

### English for Pre-Master's

To start the Pre-Master's programme, you will need to take an Academic IELTS for UKVI exam and achieve an Academic IELTS for UKVI 5.5 (minimum of 5.5 in all skills)\*. If you have an Academic IELTS for UKVI of 5.0 (minimum 5.0 in all skills)\* you can take one term of English for Pre-Master's prior to starting your programme. If you have an Academic IELTS for UKVI of 4.5 (in all skills)\* you can take two terms.

For more information, including term dates, country-specific entry requirements, course updates and tuition fees, visit [hud.ac.uk/isc](http://hud.ac.uk/isc)

### Study plan options

| Overall IELTS*          | Jun | Sept | Jan | Apr | Jun | Aug | Sept   | Dec | Jan  |
|-------------------------|-----|------|-----|-----|-----|-----|--|-----|--|
| 4.5 (4.5 in all skills) |     |      |     |     |     |     | Start your Master's degree at the University |     |  |
| 4.5 (4.5 in all skills) |     |      |     |     |     |     |  |     |  |
| 5.0 (5.0 in all skills) |     |      |     |     |     |     |  |     |  |
| 5.0 (5.0 in all skills) |     |      |     |     |     |     |  |     |  |
| 5.5 (5.5 in all skills) |     |      |     |     |     |     |  |     |  |
| 5.5 (5.5 in all skills) |     |      |     |     |     |     |  |     |  |
| 5.5 (5.5 in all skills) |     |      |     |     |     |     |  |     | Start your Master's degree at the University |

■ English for Pre-Master's ■ Pre-Master's

\* If you do not need a Tier 4 visa, or are exempted in another way, we can accept equivalent proof of English



# Pre-Master's Art and Design

In the Art and Design pathway, you will study specialist subjects that will equip you with the confidence, knowledge and skills to conduct research and creative investigation. Modules in the programme will teach you how to develop data collection and analysis techniques, and understand their limitations. You will learn to appreciate core concepts of visual awareness, theories and methodologies, and produce a body of your own practical work.

## Modules

- **Pre-Master's English and Skills for University Study 2 and 3**
- **Specialist Art & Design subjects up to Level 6**
- **Creativity in Context**
- **Creative Research and Investigation**
- **Professional Practice (Case Study)**
- **Creativity in Practice**
- **Creative Evaluation**

## Leads to a Master's degree in:

- Advanced Architectural Design MA
- Advanced Project Management in Construction MSc
- Creative Pattern Cutting MA
- Digital Media MA
- Fashion Textile Practices MA
- Graphic Design MA
- International Fashion Design Management MA
- Urban Design MA

These degrees are subject to change. For an up-to-date list and details of progression grades required, visit [hud.ac.uk/isc](http://hud.ac.uk/isc)

# Pre-Master's Business

In the Business pathway, you will study specialist subjects as an introduction to macroeconomic theories and systems. You will develop a basic understanding in financial and management accounting, while growing your understanding of operations management and strategic models. Course modules will help you to learn new research methods and techniques, and develop your skills in data analysis. You will progress with the ability to demonstrate the practical application of methods to solve realistic business problems and present your findings effectively.

## Modules

- **Pre-Master's English and Skills for University Study 2 and 3**
- **Economics and Financial Analysis**
- **Research and Quantitative Methods**
- **Strategic and Operations Management**

## Leads to a Master's degree in:

- Business MSc
- Business with Finance MSc
- Business with Human Resource Management MSc
- International Business Management MSc
- International Human Resource Management MA
- International Marketing MSc
- Management MSc
- Management with Marketing MSc
- Marketing Communications MSc
- Master of Business Administration MBA
- Risk, Disaster and Environmental Management MSc

These degrees are subject to change. For an up-to-date list and details of progression grades required, visit [hud.ac.uk/isc](http://hud.ac.uk/isc)

.....

# 95% OF STUDENTS

Go on to work and/or further study within six months of graduating.

\*Destinations of Leavers Survey 2015/16

# What's on campus?



## Buildings

|  |    |                                    |    |  |     |
|--|----|------------------------------------|----|--|-----|
| 3M Buckley Innovation Centre (BIC)       | 15 | Joseph Priestley Building (JP)     | 24 | Sir John Ramsden Court                       | 33  |
| Bridge House                             | 35 | Journalism and Media Building (JM) | 29 | Sir Patrick Stewart Building (PS)            | 21  |
| Brontë Lecture Theatres (BL)             | 03 | Lockside Building (LS)             | 27 | St. Paul's Hall (PLG)                        | 26  |
| Charles Sikes Building (CS)              | 09 | Oastler Building (OA)              | 37 | Student Central (SC)                         | 34  |
| Haslett Building (HA)                    | 14 | Queen St. Building (QSB)           | 20 | Technology Building (T)                      | 08  |
| Spärrck Jones Building (SJ)              | 16 | Queen St. South Annexe (QSA)       | 19 | The Sir George Buckley Lecture Theatre (CSL) | 18  |
| Creative Arts Building (CA)              | 31 | Queen St. Studios (QS)             | 32 | University Health Centre                     | UHC |
| Diamond Jubilee Lecture Theatre (BS1/01) | 09 | Ramsden Building (R)               | 22 | University Reception                         | 01  |
| Edith Key Building (EK)                  | 18 | Cockcroft Building (CO)            | 23 |  |     |
| Firth Street Depot (FD)                  | 36 | Researcher Hub (RH)                | 18 |  |     |
| Harold Wilson Building (HW)              | 02 | Schwann Building (SB)              | 07 |  |     |
| Heritage Key 07                          | 07 | Quayside                           | 07 |  |     |



### Charles Sikes Building

One of the greenest buildings on campus, the Charles Sikes Building offers contemporary classrooms, space to study and socialise, computer rooms, and a coffee shop.



### Creative Arts Building

This striking building houses a concert hall, cutting edge research studio, art and design studios and live recording facilities.



### 3m Buckley Innovation Centre

The Centre's state-of-the-art facilities provide a unique environment for partnerships between businesses and the University.



### Canalside East and West

Home to the Engineering and Physical Sciences Research Council, Centre for Innovative Manufacturing in Advanced Metrology and fantastic facilities for computing and multimedia.



### Student Central

Set over four levels, Student Central contains sports, leisure and learning facilities all in one place.



### St Paul's Hall

As the University's main concert venue this converted Georgian church seats up to 400 people and hosts over 70 performances each year.



### Oastler Building

One of the University's greenest buildings, providing brand new leading facilities and break out spaces to students.



### International Study Centre

The International Study Centre is at the centre of the University campus so you will feel like a Huddersfield student from day one.

**Huddersfield's campus has everything you need to study, dine and relax. Since 2010, the University has invested almost £130 million in new buildings and facilities for students on the attractive canal side campus.**





“

For me it's all about the student; meeting them face-to-face and seeing them progress. That progression could be developing confidence, supporting them to contact employers or helping them to decide their career direction. It's not all about getting them into that job, it's about raising their aspirations. We encourage students to take control of their own careers.

**Laura Trotter**  
Careers Adviser (International),  
Careers and Employability Service



Supporting your employability



Careers fair



One-to-one guidance

# Specialist advisors for international students

**The Careers and Employability Service is committed to developing the employability of international students at the University of Huddersfield.**

You'll have access to a range of support whilst studying at the University, including targeted jobs fairs on campus. You can also discuss your career options with experienced, professionally qualified advisers who work with up to date information and have strong links with employers.

The Careers and Employability Service has specialist staff who are dedicated to helping international students:

## Careers Adviser

- Delivers career development for international students across the University.
- Offers one-to-one guidance appointments.
- Helps students to find jobs.
- Supports students through the application process for graduate roles, from CV checks to interview technique.
- Runs sessions in collaboration with academic schools.
- Runs a dedicated central workshop programme for international students covering everything from graduate recruitment to how to develop global networks.

## Internship Co-ordinator

- Supports international students to find and apply for work experience opportunities whilst they are studying at the University.
- Maintains strong links with employers and business networks both nationally and internationally to boost the profile of students at the University.
- Manages The Huddersfield Internship Scheme (T.H.I.S) offering paid 10-week internships with local companies across a range of sectors exclusive to our students.
- Supports the University Jobshop which provides part-time work for students, graduate jobs and careers fairs.

## Supporting your goals

- Career guidance
- One-to-one appointments
- Finding and applying for jobs
- CV checking
- Careers Fair
- LinkedIn workshops
- Interviewing techniques
- Assessment centres

## Earn while you learn

Our Careers and Employability Service's free online JobsShop can help you find part-time work, internships and graduate vacancies whilst you study. You will also have access to a range of careers events, including presentations, skills workshops and our annual Graduate Jobs Fair, which attracts a range of local, national and multinational employers.

***Start developing key employability skills while you're studying at the International Study Centre. Find out more on page 15.***





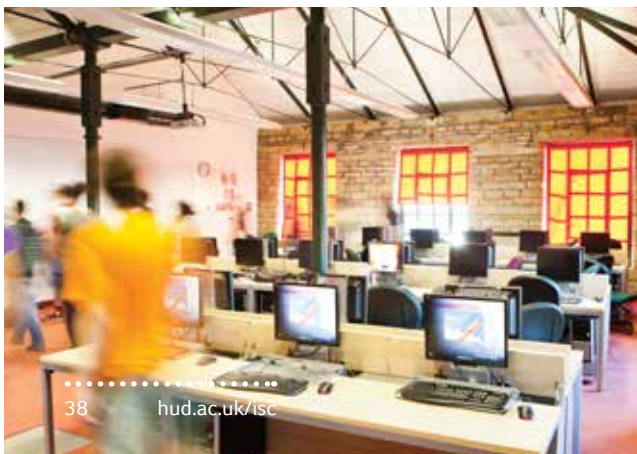
Learning support



University library



International student support



Build lasting friendships

# Supportive learning experience

**QS awarded the University a 5 Star rating for learning facilities and the computing and library service was recognised for “Customer Service Excellence”.**

## University library

Inform your research with access to millions of books, journals, databases and media items through the University's groundbreaking search engine tool, Summon. The library covers five floors and is open seven days a week, where friendly and knowledgeable staff will help you find what you need. Study spaces are available to work privately or collaboratively with your peers, and with the TalkStations computers you can make free calls over the Internet.

## IT facilities

- Over 500 PCs and Apple Macs
- Free Wi-Fi throughout campus
- IT support
- 24-hour computer access

## Virtual learning environment

UniLearn gives you 24/7 access to University, module and learning resources such as reading lists, social media tools and assignment submission.

## Learning support

The International Learning Development Programme is designed to help international students get the most from their studies and achieve their full potential. It is a free programme for all non-EU undergraduate and taught postgraduate students. Together with other international students you will meet with a member of the Learning Support team on a weekly basis who will help you to settle into your studies, understand what your lecturers expect from you and help you get better grades.

## Throughout the year our Learning Support team will help you to:

- Understand and use the University systems to search for information and data for your assessments.
- Find the resources and people you need for everything from contacting your lecturers to IT support.
- Understand and structure your assignments in the best way to get the best results from your hard work.
- Write your dissertation in the correct format, with a good structure and proper referencing.
- Revise for exams and learn examination techniques so that you are confident going into your exams.
- Explore your career options, whether it is a part-time job, work placement or a graduate career.
- Develop confidence to speak in groups, seminars and presentations.

## Immigration advice

The Immigration Service is based within the International Office. We have trained immigration advisers who are experienced in guiding students from all nationalities in their applications for Tier 4, Short-term study and visit visas. We also offer general immigration advice and are committed to providing all our students with high quality immigration advice so that immigration queries can be resolved quickly.

## Health

Our University Health Centre on campus offers confidential and comprehensive medical care from our experienced team of doctors, nurses and physiotherapists.

## Religion

Our multicultural University is home to a diverse mix of faith groups. Our Faith Centre on campus is a relaxing place for people of any faith, or no faith, and there are rooms for worship, meditation and prayer, as well as ablution facilities.

## Disability support

We have a reputation for excellent support for our disabled students. As an international student you will have access to the same high quality provision as students from the UK.



# Accommodation

**Where can you live? It's an important question when you are thinking about travelling to the other side of the world for university. Through Student.com, you can find your ideal student room.**

## High quality, low cost

Huddersfield is a safe and friendly place to live and there is a variety of high-quality and affordable accommodation options for you to choose from.

## Close to campus

Most of the student accommodation is conveniently located less than ten minute's walk from the University campus and the International Study Centre. There is a range to suit all tastes and budgets, all with private bedrooms. Features may include:

- En-suite bathroom
- Gym
- Communal area and common room
- Games room
- All-inclusive utilities
- Free Wi-Fi
- On-site laundry

Accommodation options may be subject to change. For the latest information, please visit [hud.ac.uk/isc](http://hud.ac.uk/isc)

## Premium luxury

Fully-furnished studio apartments offer a luxurious place to live. Features may include:

- 32-inch TV
- Cinema room
- Shared common room
- On-site laundry
- Gym



“

This is my first time in another country so I feel very excited. Everything is fresh and new in my mind. There are different lifestyles, different cultures and different sorts of people. I live in Stott Hall Park and my flatmates are from different countries. So when we are cooking or talking I can learn many different cultures. I think this is a good thing in my life. Going to another country to meet other nationalities is fantastic.

**Alex, China**

International Year One in Marketing





# Apply to study with us

If you would like to apply to study at the University of Huddersfield International Study Centre, you will need to complete an application form and submit the relevant documentation.

You can either apply through your local education agent or directly via our website. If you are applying directly and have a question, then a Student Enrolment Adviser will be happy to help. They speak a variety of languages and understand several more.

Tel: + 44 1273 339333

For full information visit: [hud.ac.uk/isc/apply](https://hud.ac.uk/isc/apply)

## Student insurance

We strongly recommend that international students have the protection of personal insurance whilst in the UK. To cover you as a student at the International Study Centre, you may wish to purchase our "StudyCare Insurance Plus" insurance cover. This policy will cover you for loss of personal possessions, travel delay, as well as providing medical insurance until the end of your International Study Centre academic programme. You can purchase StudyCare Insurance Plus as part of the application process. If you prefer, you may take out insurance cover with another provider.

For more information, visit [hud.ac.uk/isc](https://hud.ac.uk/isc)

 [facebook.com/ischuddersfield](https://facebook.com/ischuddersfield)

 [instagram.com/huddersfieldisc](https://instagram.com/huddersfieldisc)

 [twitter.com/huddersfieldisc](https://twitter.com/huddersfieldisc)

 [youtube.com/ischuddersfield](https://youtube.com/ischuddersfield)



## Disclaimer

This prospectus is issued for the general guidance of students considering entry to the University of Huddersfield International Study Centre from September 2018. The information is correct at the time of going to press and the programmes and services described herein are those which Study Group is planning to offer. We make every effort to ensure that the content of our prospectus, website and other materials is accurate. However, on occasion it may be necessary to alter certain aspects of a module or programme, for example if changes are required to meet external requirements; or if programmes are over-subscribed and the quality of teaching would be adversely affected as a result.

In such circumstances we may have to alter the timetable, change the teaching location of the programme or, in extreme cases, cancel or substantially amend the content of the programme. Should any of these changes become necessary, we will give you as much notice as possible before they come into effect and ensure that any disruption to your studies is minimised.

If your programme is cancelled, we will work in consultation with you to offer a suitable alternative, subject to meeting the admission requirements for that programme or the opportunity to obtain a refund of any advance payments you have made for the programme. The alternative programme may not be at the same International Study Centre as the original offer.

Study Group reserves the right, where applicable, to amend the regulations governing programmes at the University of Huddersfield International Study Centre. We therefore strongly recommend that immediately prior to making any application to - or accepting any offer from - us, you refer to the most up-to-date version of the programme descriptions and specifications and the regulations on the University of Huddersfield International Study Centre website.

Neither the University of Huddersfield nor Study Group shall be liable for any errors or omissions that may be contained in this prospectus.



The International Study Centre programmes are provided by Study Group in collaboration with the University of Huddersfield.

Programmes at the International Study Centre are delivered by Study Group.

Study Group is a global leader in preparing students for international academic success and rewarding careers through a life-changing learning experience. We offer customised programmes across higher education and language online education starting from high school to lifelong learning. Study Group taught more than 60,000 students from more than 150 countries across the UK, Europe, USA, Canada, Australia and New Zealand in 2017.

## Admission enquiries:

International Admissions Centre  
1 Billinton Way, Brighton, BN1 4LF, UK  
+44 (0) 1273 339333

You can also contact us online by visiting  
[hud.ac.uk/isc](http://hud.ac.uk/isc)

*University of*  
**HUDDERSFIELD**

